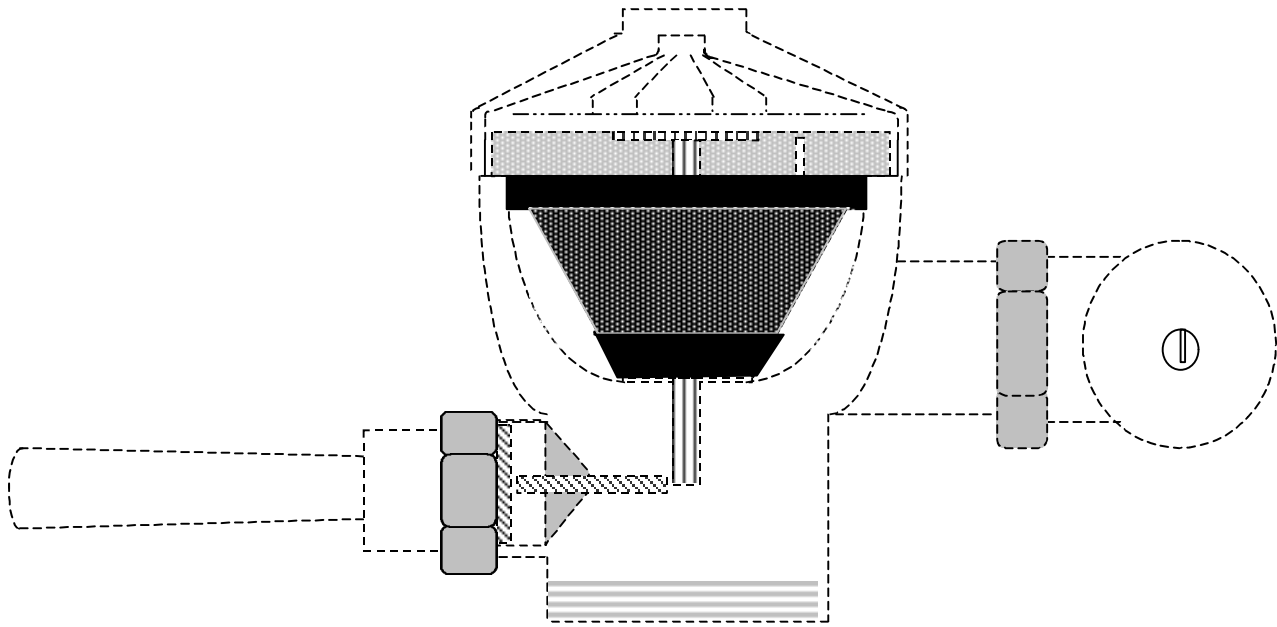
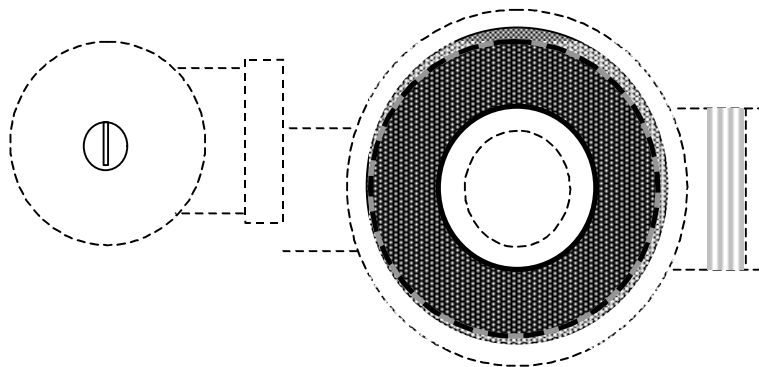


SFDG1 "DIRT GRABBER" FLUSH VALVE FILTER
for sloan or zurn manually operated flush valves



SIDE VIEW



TOP VIEW LESS HANDLE, CAPS & DIAPHRAGM

Protects flush valve diaphragm, diaphragm orifice, diaphragm seating area and vacuum breaker from sand, rocks, copper shavings and other foreign particles.

Made with type 304 stainless steel filter screen with .0092" openings & highly chemical resistant thermoplastic molding.

Filter screen has a large 3 sq. in. filtering area to minimize frequency of filter fill-up.

Allows amount of water designated by code to pass through the flush valve.

Fits easily into most Sloan & Zurn manual or automatic diaphragm type flush valves (some Zurn flush valves may require a simple installation tool...see SFDGIT literature).

Project: _____

Location: _____

Approval: _____

South Fork Mfg. P.O. Box 973 Coalville, Ut 84017 phone (801)953-3001 fax (435)336-1343