

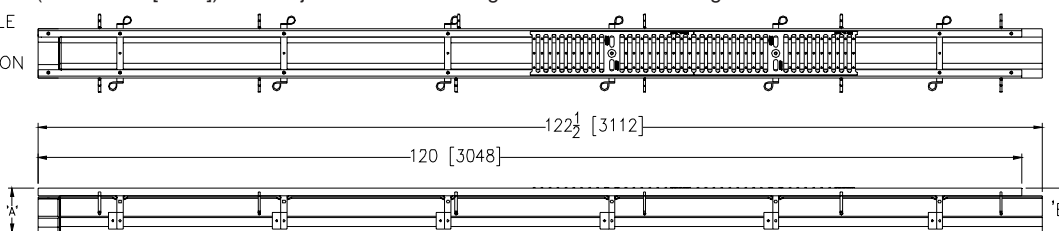
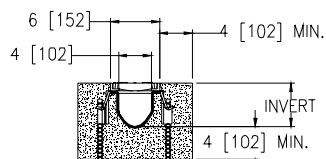
**Z806**

SPECIFICATION SHEET

**6 [159] WIDE REVEAL FIBER REINFORCED
POLYMER TRENCH DRAIN SYSTEM**

TAG _____

Dimensional Data (inches and [mm]) are Subject to Manufacturing Tolerances and Change Without Notice

SPECIFYING ENGINEER IS RESPONSIBLE
FOR CONCRETE ENCASEMENT AND
REINFORCING BASED UPON APPLICATION
AND LOCAL CODES

NOTE: + Actual Channel length is 122 1/2 [3112] to allow for overlap.

ENGINEERING SPECIFICATION: Zurn Z806

Channels shall be 120 [3048] long, 6 [152] wide and have a 4 [102] throat. Modular channel sections shall be made of Fiber Reinforced Polymer (FRP). Shall have a positive mechanical connection between channel sections that will not separate during the installation and shall mechanically lock into the concrete surround every 10 [254]. Channels shall weigh less than 2.31 lbs. [1.05kg] per linear foot, have a smooth, 1-1/2 [38] radiused self cleaning bottom with a Manning's coefficient of .009 and .75% or neutral 0% built in slope. Shall be provided with standard DGC grates that lock down to frame. Zurn 6 [152] wide reveal Ductile Iron Slotted Grate conforming to ASTM specification A536-84, Grade 80-55-06. Ductile Iron grate is rated class C per the DIN EN1433 top load classifications. Supplied in 20 [508] nominal lengths with 1/2 [13] wide slots, and 3/4 [19] bearing depth. Grate has an open area of 18.57 sq. in per ft. [39,307 sq. mm per meter]. The 1/4 [6] thick Heavy-Duty Carbon Steel Frame Assembly conforms to ASTM specification A36 with 12-4 [102] long concrete anchors per 120 [3048]. Grate lockdown bars are to be integral to the frame. The frame is supplied with a powder coated finish. All welds must be performed by a certified welder per ASTM standard AWS D1.1. Frames Shall be produced in the U.S.A.

PREFIX OPTIONS (Check/specify appropriate options)

- ___ Z Ten-foot Fiber Reinforced Polymer (FRP)*
___ ZV Ten-foot Fiber Reinforced Vinylster

SUFFIX OPTIONS (Check/specify appropriate options)**Outlet Adapters Add/Each**

- ___ -E1 Closed End Cap
___ -E2 2 [51] No-Hub End Outlet
___ -E3 3 [76] No-Hub End Outlet
___ -E4 4 [102] No-Hub End Outlet
___ -E6 6 [152] No-Hub End Outlet
___ -U2 2 [51] No-Hub Bottom Outlet
___ -U3 3 [76] No-Hub Bottom Outlet
___ -U4 4 [102] No-Hub Bottom Outlet
___ -U6 6 [152] No-Hub Bottom Outlet

Frame Options

- ___ -CBF Black Acid Resistant Coated Frame
___ -HD Extra-Heavy-Duty Frame Assembly with Anchor Studs *

Grate Options (Load Classifications are per DIN EN1433)

- ___ -BDC Black Acid Resistant Epoxy Coated Ductile Grate - Class C
___ -BDE Black Acid Resistant Epoxy Coated Ductile Grate - Class E
___ -BG Galvanized Ductile Iron Cast Bar Grate - Class C
___ -DC Ductile Iron Solid Cover - Class C
___ -DBG Ductile Iron Cast Bar Grate - Class C
___ -DGC Ductile Iron Slotted Grate - Class C *
___ -DGE Ductile Iron Slotted Grate - Class E
___ -GDC Galvanized Ductile Slotted Grate - Class C
___ -GDE Galvanized Ductile Slotted Grate - Class E
___ -GHPD Galvanized Heel-Proof Ductile Grate - Class C
___ -GHPDE Galvanized Heel-Proof Ductile Grate - Class E
___ -HPD Heel-Proof Ductile Slotted Grate - Class C
___ -HPDE Heel-Proof Ductile Slotted Grate - Class E
___ -HPP Heel-Proof Polyethylene Grate - Class A
___ -LD Ductile Iron Longitudinal Slotted Grate - Class B
___ -RFG Reinforced Galvanized Steel Slotted Grate - Class B
___ -RFS Reinforced Stainless Steel Slotted Grate - Class B
___ -RPG Reinforced Galvanized Perforated Grate - Class B
___ -RPS Reinforced Stainless Steel Perforated Grate - Class B

Miscellaneous Options

- ___ -DB Bottom Dome Strainer
___ -JC Joint Connector
___ -RC Rebar Clip (Set of 2)

MADE in the U.S.A. (Load Classifications are per DIN EN1433)

- ___ -AWG Aluminum Wire Grate - Class A
___ -BDE-USA Black Acid Resistant Epoxy Coated Ductile Grate - Class E
___ -DGC-USA Ductile Iron Slotted Grate - Class C
___ -DGE-USA Ductile Iron Slotted Grate - Class E
___ -FG Fabricated Galvanized Steel Slotted Grate - Class A
___ -FS Fabricated Stainless Steel Slotted Grate - Class A
___ -GDC-USA Galvanized Ductile Slotted Grate - Class C
___ -GDE-USA Galvanized Ductile Slotted Grate - Class E
___ -PG Perforated Galvanized Steel Grate - Class A
___ -PS Perforated Stainless Steel Grate - Class A
___ -PPC Plastic Perforated Grate - Class C

Trench No.	'A' Shallow Inv.	'B' Deep Inv.	Flow		
			(cfs)	(gpm)	(lps)
1001	3.50 [89]	4.40 [112]	.196	88	6
1002	4.40 [112]	5.30 [135]	.296	133	8
1002N	5.30 [135]	5.30 [135]	-	-	-
1003	5.30 [135]	6.20 [157]	.397	178	11
1004	6.20 [157]	7.10 [180]	.501	225	14
1004N	7.10 [180]	7.10 [180]	-	-	-
1005	7.10 [165]	8.00 [203]	.604	271	17
1006	8.00 [203]	8.90 [203]	.711	319	20
1007	8.90 [226]	9.80 [249]	.816	366	23
1008	9.80 [249]	10.70 [272]	.922	414	26
1008N	10.70 [272]	10.70 [272]	-	-	-
1009	10.70 [272]	11.60 [295]	1.029	462	29
1010	11.60 [295]	12.50 [318]	1.136	510	32

Miscellaneous Options cont.

- ___ -SW 8.1 [206] High Sidewall Extension Adapter (Per Pair)
___ -VP Vandal-Proof Lockdown

Decorative Grate Options (Load Classifications are per DIN EN1433)

- ___ -BCD Bronze Circular Decorative Grate - Class A
___ -BDD Bronze Diagonal Decorative Grate - Class A
___ -DCD Ductile Iron Circular Decorative Grate - Class C
___ -DDD Ductile Iron Diagonal Decorative Grate - Class A
___ -DOG Ductile Iron Decorative Grate - Class A
___ -DWV Ductile Wave Decorative Grate - Class A
___ -HPB Heel-Proof Bronze Slotted Grate - Class A
___ -HPS Heel-Proof Stainless Steel Slotted Grate - Class A
___ -SBG Stainless Steel Bar Grate - Class E
___ -SCD Stainless Steel Circular Decorative Grate - Class B
___ -SDD Stainless Steel Diagonal Decorative Grate - Class B
___ -SOG Stainless Steel Decorative Grate - Class B

Decorative MADE in the U.S.A. (Load Classifications are per DIN EN1433)

- ___ -BZ Bronze Decorative Grate - Class A
___ -NBZ Nickel Bronze Decorative Grate - Class A
___ -PSR Perforated Stainless Steel Raised Grate - Class A
___ -SWG Stainless Steel Wire Grate - Class A

*REGULARLY FURNISHED UNLESS OTHERWISE SPECIFIED

REV. X DATE: 10/19/11 C.N. NO. 122302

DWG. NO. 56815

PRODUCT NO. Z806

ZURN INDUSTRIES, LLC ♦ SPECIFICATION DRAINAGE OPERATION ♦ 1801 Pittsburgh Ave. ♦ Erie, PA 16514

Phone: 814/455-0921 ♦ Fax: 814/454-7929 ♦ World Wide Web: www.zurn.com

In Canada: ZURN INDUSTRIES LIMITED ♦ 3544 Nashua Drive ♦ Mississauga, Ontario L4V1L2 ♦ Phone: 905/405-8272 Fax: 905/405-1292