

AQUASPEC[®] FAUCETS

MODEL - Z87100 SERIES
Z87100-HS SERIES
KITCHEN SINK FAUCET



TECHNICAL INFORMATION

FLOW: 2.2 GPM [8.3 L] PRESSURE COMPENSATING AERATOR *

MAXIMUM PRESSURE: 125 PSI

MAXIMUM TEMPERATURE: 180° F

HANDLE NUT TORQUE: 15-20 FT - LBS.

CARTRIDGE STYLE: QUARTER TURN CERAMIC DISK

** OTHER AERATORS AVAILABLE BY REQUEST*

INSTALLATION INSTRUCTIONS

1. REMOVE FAUCET BODY(#6) FROM CARTON AND APPLY PLUMBERS PUTTY TO UNDERSIDE OF BODY. (REFER TO FIGURE 1).
2. PLACE FAUCET ON SINK AND REMOVE MOUNTING NUTS (#7A) FROM BAG G60502.
3. HAND TIGHTEN MOUNTING NUTS (#7A) FROM UNDER SINK. MAKE SURE FAUCET IS CENTERED PROPERLY. **DO NOT OVER TIGHTEN.**
4. OPTIONAL HOSE SPRAY (REFER TO FIGURE 2)
REMOVE HOSE SPRAY ASSEMBLY (#11) FROM PACKAGING. REMOVE MOUNTING NUT FROM HOSE SPRAY HOLDER (#11B) AND INSERT HOSE SPRAY HOLDER THROUGH FIXTURE. ASSEMBLE MOUNTING NUT ONTO HOSE SPRAY HOLDER AND TIGHTEN. DO NOT OVER TIGHTEN. INSERT THREADED END OF HOSE SPRAY (#11A) THROUGH HOSE SPRAY HOLDER (#11B) AND CONNECT HOSE SPRAY (#11A) TO DIVERTER ADAPTOR (#10). TIGHTEN TO CREATE A WATER TIGHT CONNECTION.
5. ATTACH LAVATORY SUPPLIES TO FAUCET WITH RISER NUTS (ITEM #7B).
6. OPTIONAL GRID STRAINER (-G) / HANDICAP OFFSET GRID DRAIN (-GH)
INSTALL GRID STRAINER IN SINK OUTLET AND PLUMB WASTE CONNECTION.
7. INSTALL SPOUT INTO BASE AND TIGHTEN NUT (SEE VIEWS FOR SWING/RIGID CONNECTION).
8. TURN SUPPLY WATER ON AND OPERATE FAUCET CHECKING FOR LEAKS.
9. REPLACE HANDLE SCREWS AND COLOR INDEX BUTTONS.
10. INSTALL AERATOR INTO FAUCET AND HAND TIGHTEN. IT MAY BE NECESSARY TO UNSCREW AND CLEAN AERATOR AT START-UP.

MAINTENANCE

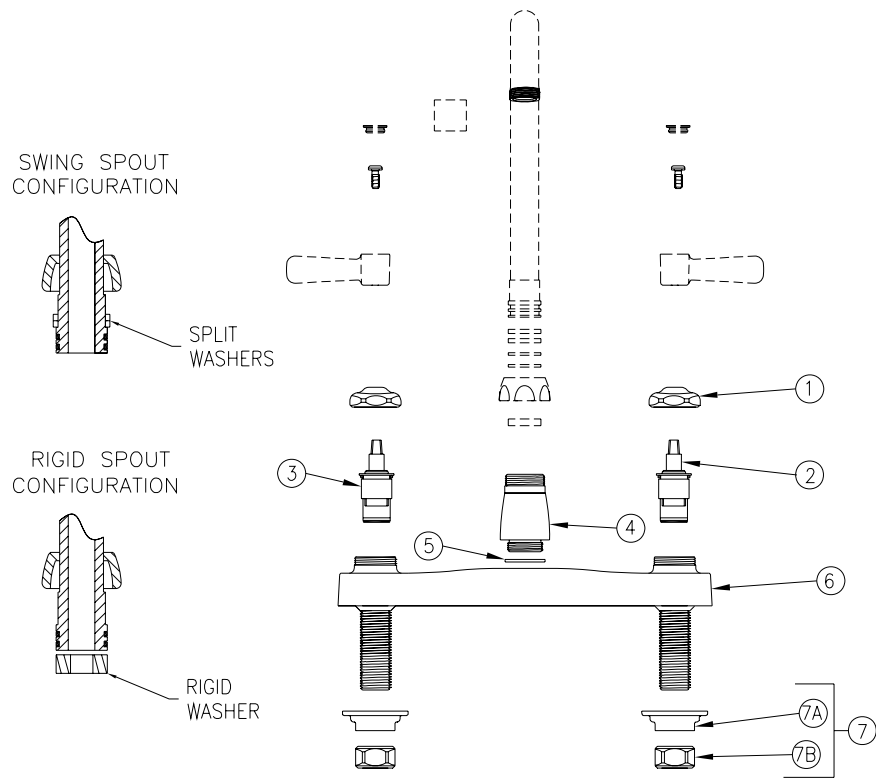
1. YOUR ZURN AQUASPEC FAUCET HAS A HIGHLY POLISHED NICKEL CHROME PLATED FINISH. CLEAN WITH SOAP AND WATER OR A MILD CLEANER WHICH IS SAFE FOR CHROME PLATING. DO NOT USE ACIDS OR TOILET BOWL CLEANER AS THEY WILL DAMAGE THE FINISH.
2. AQUASPEC FAUCETS CONTAIN CERAMIC DISK CARTRIDGES WHICH REQUIRE NO MAINTENANCE. TO REMOVE THE CARTRIDGE, SHUT THE WATER OFF, LOOSEN THE HANDLE NUTS AND PULL UP ON THE CARTRIDGE.

REPLACEMENT PARTS

COLD WATER CARTRIDGE	59517001	HOSE SPRAY AND HOLDER G66607
HOT WATER CARTRIDGE	59517002	
INDEX BUTTONS	G60500	

FIGURE 1

Z871B1 PICTURED

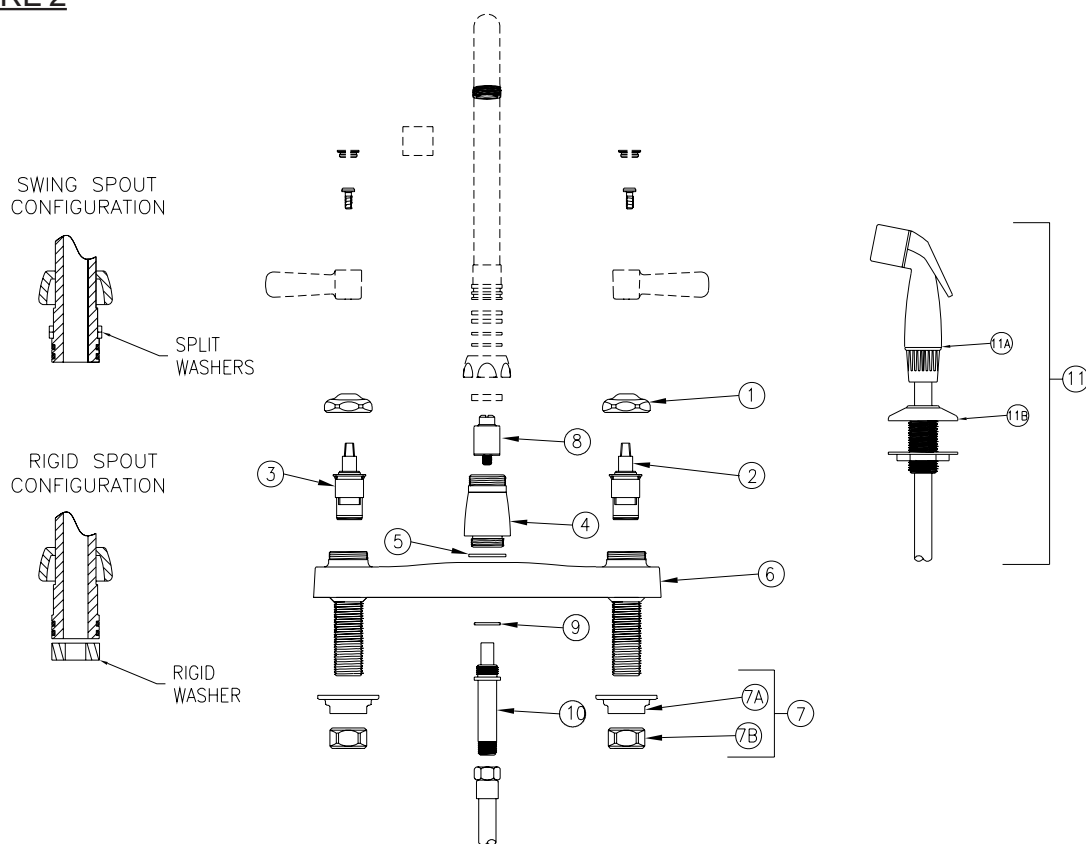


Z87100 PARTS LIST

ITEM				QTY	ITEM				QTY
1	59440001	HANDLE NUT		2	5	58155019	O-RINGS		1
2	59517001	SHORT COLD CARTRIDGE		1	6	60545001	KITCHEN DECK BODY		1
3	59517002	SHORT HOT CARTRIDGE		1	7	G60502	NUTS		1
4	60467001	BASE		1	7A	59530002	MOUNTING NUT		2
					7B	59532001	1/2"[13] NPSM RISER NUT		2

Z871B1-HS PICTURED

FIGURE 2



Z87100-HS PARTS LIST

ITEM				QTY	ITEM				QTY
1	59440001	HANDLE NUT		2	8	60486001	DIVERTER		1
2	59517001	SHORT COLD CARTRIDGE		1	9	58155015	O-RING		1
3	59517002	SHORT HOT CARTRIDGE		1	10	60943001	DIVERTER ADAPTOR		1
4	60467001	BASE		1	11	G66607	HOSE ASS'Y		1
5	58155019	O-RINGS		1	11A	61319001	HOSE SPRAY		1
6	60545001	KITCHEN DECK BODY		1	11B	61319002	SPRAY HOSE HOLDER		1
7	G60502	NUTS		1					
7A	59530002	MOUNTING NUT		2					
7B	59532001	1/2"[13] NPSM RISER NUT		2					

ZURN INDUSTRIES, LLC
 COMMERCIAL BRASS OPERATIONS
 2640 SOUTH WORK STREET
 FALCONER, N.Y. 14733
 PHONE: 1-716-665-1132 FAX: 1-716-665-1135
 WORLD WIDE WEB: www.zurn.com

