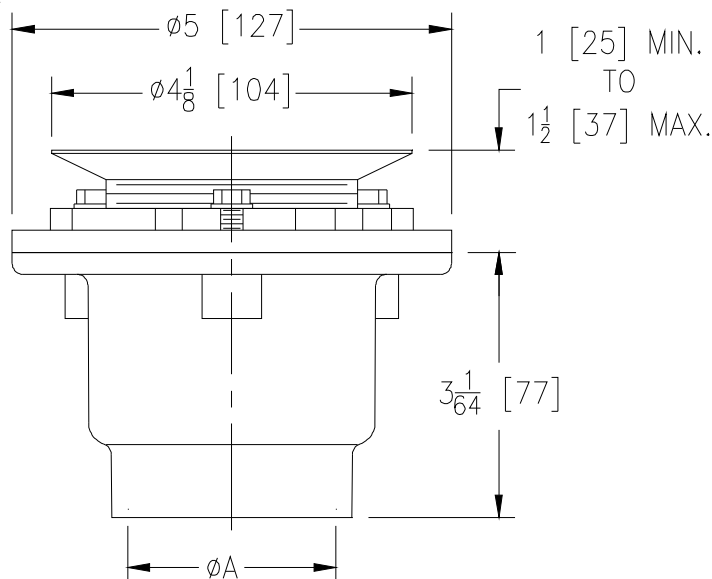


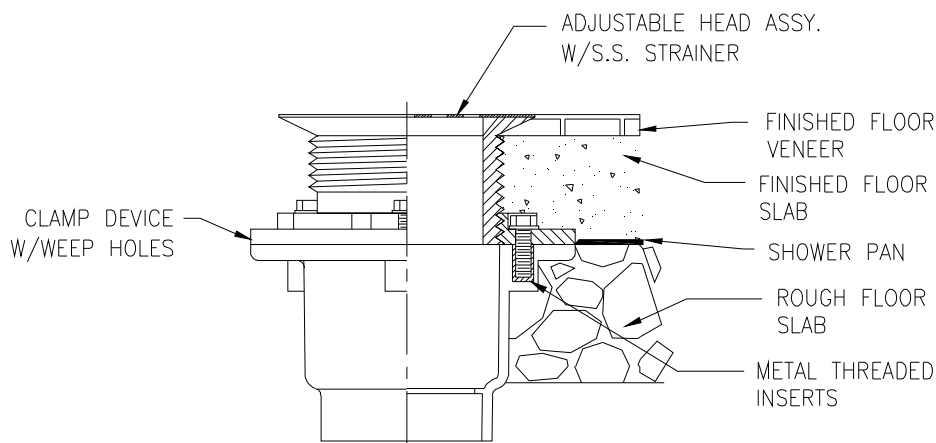
Dimensional Data (inches and [ mm ]) are Subject to Manufacturing Tolerances and Change Without Notice



Product	'A' Outlet Connection	Grate Open Area Sq. In [cm <sup>2</sup> ]
___ FD-2250-PV2	2 [50] PVC Solvent Weld	7 [45]
___ FD-2250-AB2	2 [50] ABS Solvent Weld	
___ FD-2250-IP2	2 [50] IPS	
___ FD-2250-AB15	1 1/2 [38] ABS Solvent Weld	
___ FD-2250-IP15	1 1/2 [38] IPS	

#### FD2250 Shower Drain

Recommended for shower area installations where a waterproofing membrane is used. Complete with Dura-coated cast iron body or PVC/ABS body, clamp collar, adjustable PVC head and secured stainless steel strainer.



#### Typical installation

ZURN INDUSTRIES, LLC. ♦ SPECIFICATION DRAINAGE OPERATION ♦ 1801 Pittsburgh Ave. ♦ Erie, PA 16514

Phone: 814/455-0921 ♦ Fax: 814/454-7929 ♦ World Wide Web: [www.zurn.com](http://www.zurn.com)

In Canada: ZURN INDUSTRIES LIMITED ♦ 3544 Nashua Drive ♦ Mississauga, Ontario L4V1L2 ♦ Phone: 905/405-8272 Fax: 905/405-1292