



# Z5120

## 19" Round Self Rimming, Countertop Lavatory

TAG \_\_\_\_\_



Z5120 Series

### Recommended Trim:

- ☐ **Z8743-PC** Grid Strainer
- ☐ **Z8700 SERIES** P-Trap
- ☐ **Z8800 SERIES** Stop with flexible supplies
- ☐ **Z8946-1-NT** ADA trap, stop, and supply protectors

### Optional Trim:

- ☐ **Z8746-PC** ADA grid Strainer
- ☐ **Z8946-3-NT** ADA trap, stop, and supply protectors for offset grid strainers.

### Z5120 Series

- 19" [482 mm] round
- Vitreous china
- Faucet holes for single, 4" or 8" centers
- Self-rimming front overflow design
- Waste: 1-1/4" O.D.
- Depth: 6-1/2"
- Inside Bowl Dimensions: 14-3/4" x 12"
- Shipping Weight: 22 lbs.

### Engineering Specification:

- ☐ **Z5121 Lavatory** - 19" round vitreous china, self-rimming countertop lavatory with single faucet hole.
- ☐ **Z5124 Lavatory** - 19" round vitreous china, self-rimming countertop lavatory with 4" center faucet holes.
- ☐ **Z5128 Lavatory** - 19" round vitreous china, self-rimming countertop lavatory with 8" center faucet holes.

This space is for Architectural/engineering Approval

*These dimensions and specifications are subject to change without notice.*

*Fixture dimensions meet ANSI/ASME standard A112.19.2 and CAN/CSA B45 requirements.*

*Meets the American Disabilities Guidelines and ANSI A117.1 requirements when lavatory is installed 864mm (34") from finished floor.*



See Zurn One Systems for suggested packages.

**Zurn Plumbing Products Group** Commercial Brass and Fixtures Operation  
2640 South Work Street · Falconer, NY 14733 · Phone: 716-665-1132 · Fax: 716-665-1135 · [www.zurn.com](http://www.zurn.com)



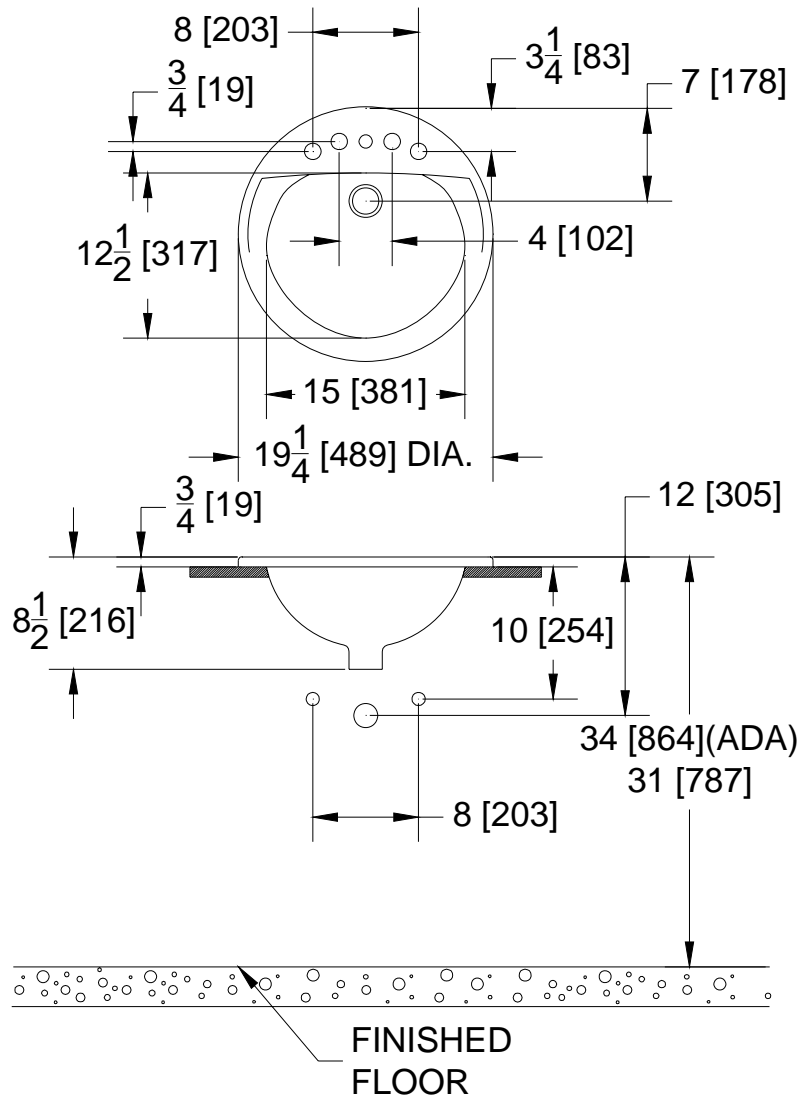
# Z5120

## 19" Round Self Rimming, Countertop Lavatory Rough-in

TAG \_\_\_\_\_

Rough-in dimensions for Z5120 Series

- Z5121 Lavatory with single hole faucet
- Z5124 Lavatory with 4" center faucet holes
- Z5128 Lavatory with 8" center faucet holes



*These dimensions and specifications are subject to change without notice.*

*Fixture dimensions meet ANSI/ASME standard A112.19.2 and CAN/CSA B45 requirements.*

*Meets the American Disabilities Guidelines and ANSI A117.1 requirements when lavatory is installed 864mm (34") from finished floor.*



**Zurn Plumbing Products Group** Commercial Brass and Fixtures Operation

2640 South Work Street • Falconer, NY 14733 • Phone: 716-665-1132 • Fax: 716-665-1135 • [www.zurn.com](http://www.zurn.com)