



Z5660

1.6 GPF ADA Height, Elongated
Floor Mounted Flush Valve Toilet

TAG _____



Z5660 Series

Recommended Trim:

☐ Z6000AV-WS1

AquaVantage® 'AV' low consumption 1.6 gpf exposed closet flush valve.

☐ Z5955SS-EL Elongated, standard white, open front toilet seat less cover with stainless steel check hinge.

☐ Z5972-COMB Closet bolt/wax ring kit.

Optional Trim:

☐ Z5795-FLO-JR PVC Flo-Bowl Jr. closet flange kit

Optional Water-Savings Trim:

☐ Z6000AV-DF-WS1 AquaVantage® AV dual flush water-conserving exposed closet flush valve (estimated 30% potential water savings).

Z5660 Series

- 1.6 gpf (gallons per flush)
- Vitreous china
- Elongated front rim, 17" high, ADA compliant
- 2" fully glazed trapway
- Siphon jet flush action
- 1-1/2" top spud
- Includes bolt caps
- Shipping Weight: 57 lbs.

Engineering Specification:

☐ **Z5660 with Top Spud**
Vitreous china, 1.6 gpf [6 Lpf] low consumption, ADA compliant, floor mounted toilet with siphon jet flush action and elongated front rim with 1-1/2" top spud and two bolt caps.

☐ **Z5661 with Bedpan Lugs**
Vitreous china, 1.6 gpf [6 Lpf] low consumption, ADA compliant, floor mounted toilet with siphon jet flush action and elongated front rim designed to accommodate a bedpan with 1-1/2" top spud and two bolt caps.

These dimensions and specifications are subject to change without notice.

Fixture dimensions meet ANSI/ASME standard A112.19.2 and CAN/CSA B45 requirements.

Meets the American Disabilities Guidelines and ANSI A117.1 requirements.



This space is for Architectural/engineering Approval

See Zurn One Systems for suggested packages.

Zurn Plumbing Products Group Commercial Brass and Fixtures Operation
2640 South Work Street · Falconer, NY 14733 · Phone: 716-665-1132 · Fax: 716-665-1135 · www.zurn.com

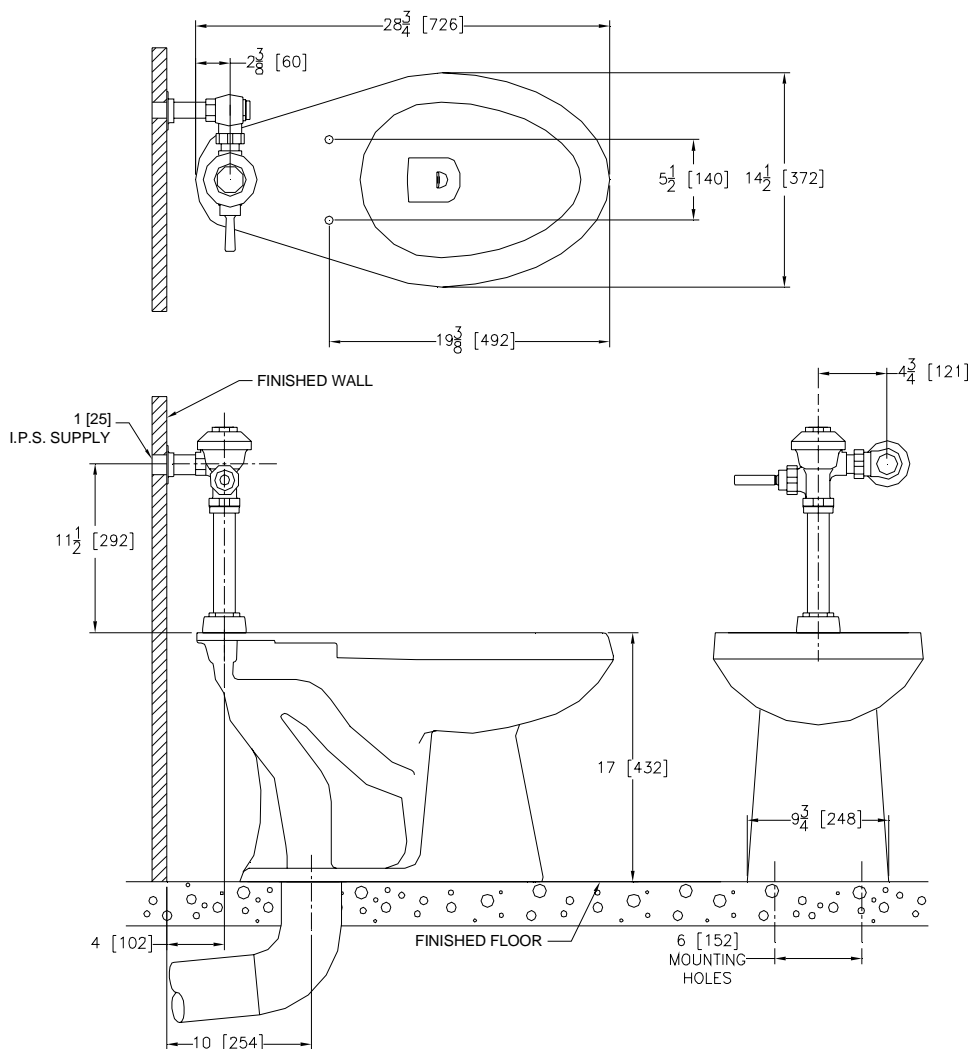
Z5660

1.6 GPF ADA Height, Elongated Floor Mounted Flush Valve Toilet Rough-in

TAG _____

Rough-in dimensions for Z5660 Series

- Z5660 with top spud
- Z5661 with bedpan lugs



These dimensions and specifications are subject to change without notice.

Fixture dimensions meet ANSI/ASME standard A112.19.2 and CAN/CSA B45 requirements.

Meets the American Disabilities Guidelines and ANSI A117.1 requirements.



Zurn Plumbing Products Group Commercial Brass and Fixtures Operation

2640 South Work Street • Falconer, NY 14733 • Phone: 716-665-1132 • Fax: 716-665-1135 • www.zurn.com