



# Z5110

20" x 17" Countertop Lavatory

TAG \_\_\_\_\_



*Z5110 Series*

## Recommended Trim:

- ☐ **Z8743-PC** Grid Strainer
- ☐ **Z8700 SERIES** P-Trap
- ☐ **Z8800 SERIES** Stop with flexible supplies
- ☐ **Z8946-1-NT** ADA trap, stop, and supply protectors

## Optional Trim:

- ☐ **Z8746-PC** ADA grid Strainer
- ☐ **Z8946-3-NT** ADA trap, stop, and supply protectors for offset grid strainers.

*These dimensions and specifications are subject to change without notice.*

*Fixture dimensions meet ANSI/ASME standard A112.19.2 and CAN/CSA B45 requirements.*

*Meets the American Disabilities Guidelines and ANSI A117.1 requirements when lavatory is installed 864mm (34") from finished floor.*



See Zurn One Systems for suggested packages.

## Z5110 Series

- 20" [508 mm] x 17" [432 mm]
- Vitreous china
- Faucet holes for single, 4" or 8" centers
- Self-rimming front overflow design
- Waste: 1-1/4" O.D.
- Depth: 6-5/8"
- Shipping Weight: 22 lbs.

## Engineering Specification:

- ☐ **Z5111 Lavatory** - 20" x 17" vitreous china, self-rimming, countertop lavatory with single faucet hole.
- ☐ **Z5114 Lavatory** - 20" x 17" vitreous china, self-rimming, countertop lavatory with 4" center faucet holes.
- ☐ **Z5118 Lavatory** - 20" x 17" vitreous china, self-rimming, countertop lavatory with 8" center faucet holes.

This space is for Architectural/engineering Approval

**Zurn Plumbing Products Group** Commercial Brass and Fixtures Operation  
2640 South Work Street · Falconer, NY 14733 · Phone: 716-665-1132 · Fax: 716-665-1135 · [www.zurn.com](http://www.zurn.com)



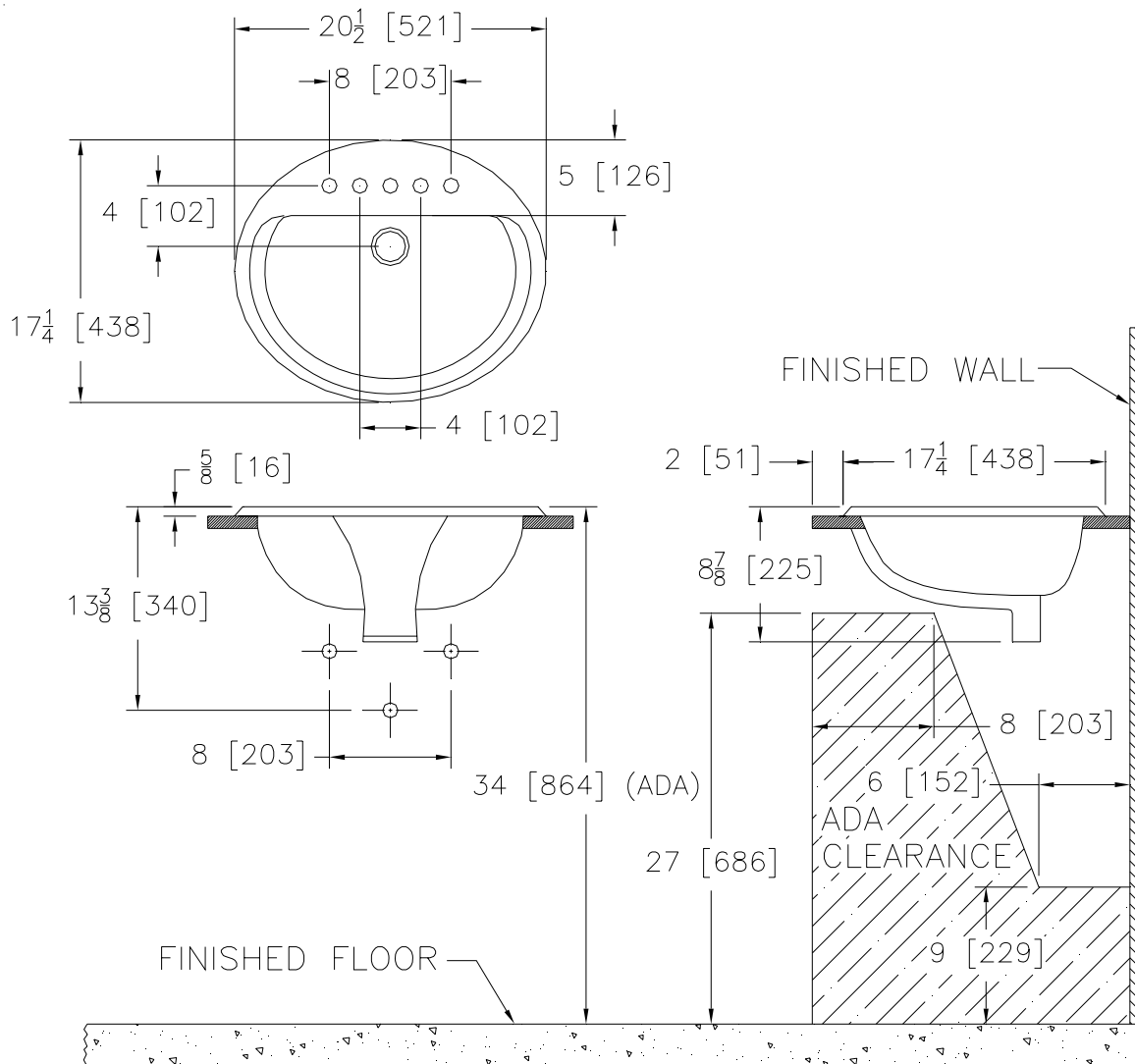
# Z5110

## 20" x 17" Countertop Lavatory Rough-in

TAG \_\_\_\_\_

Rough-in dimensions for Z5110 Series

- Z5111 Countertop Lavatory with single faucet hole
- Z5114 Countertop Lavatory with 4" center faucet holes
- Z5118 Countertop Lavatory with 8" center faucet holes



*These dimensions and specifications are subject to change without notice.*

*Fixture dimensions meet ANSI/ASME standard A112.19.2 and CAN/CSA B45 requirements.*

*Meets the American Disabilities Guidelines and ANSI A117.1 requirements when lavatory is installed 864mm (34") from finished floor.*



**Zurn Plumbing Products Group** Commercial Brass and Fixtures Operation

2640 South Work Street · Falconer, NY 14733 · Phone: 716-665-1132 · Fax: 716-665-1135 · [www.zurn.com](http://www.zurn.com)