



Z5340

20" x 18" Wall Hung Lavatory

TAG _____



Z5340 Series

- 20" [508 mm] x 18" [457 mm]
- Vitreous china
- Faucet holes for single, 4", or 8" centers
- Wall hung lavatory provided with wall hanger or for use with concealed arm carrier systems
- Front overflow
- Waste: 1-1/4" O.D.
- Depth: 5-3/4"
- Shipping Weight: 42 lbs.

Z5340 Series

Suffix Options:

- ___ **-CB** Cast ductile bracket.
___ **-PED** Vitreous china half pedestal

Recommended Trim:

- ☐ **Z8743-PC** Grid Strainer.
- ☐ **Z8700** Series P-Trap.
- ☐ **Z8800** Series Stop with Flexible Supplies.
- ☐ **Z8946-1-NT** ADA Trap, Stop, and Supply Protectors.

Optional Trim:

- ☐ **Z8746-PC** ADA Grid Strainer.
- ☐ **Z8946-3-NT** ADA Trap, Stop, and Supply Protectors for Offset Grid Strainers.

These dimensions and specifications are subject to change without notice.

Fixture dimensions meet ANSI/ASME standard A112.19.2 and CAN/CSA B45 requirements.

Meets the American Disabilities Guidelines and ANSI A117.1 requirements when lavatory is installed 34" [864mm] from finished floor.



See Zurn One Systems for suggested packages.

Engineering Specification:

- ☐ **Z5341** 20" x 18" vitreous china wall hung lavatory with single faucet hole. Provided with hanger plate and holes for concealed arm carrier systems.
- ☐ **Z5344** 20" x 18" vitreous china wall hung lavatory with 4" center faucet holes. Provided with hanger plate and holes for concealed arm carrier systems.
- ☐ **Z5348** 20" x 18" vitreous china wall hung lavatory with 8" center faucet holes. Provided with hanger plate and holes for concealed arm carrier systems.

This space is for Architectural/engineering Approval

Zurn Plumbing Products Group Commercial Brass and Fixtures Operation
2640 South Work Street · Falconer, NY 14733 · Phone: 716-665-1132 · Fax: 716-665-1135 · www.zurn.com



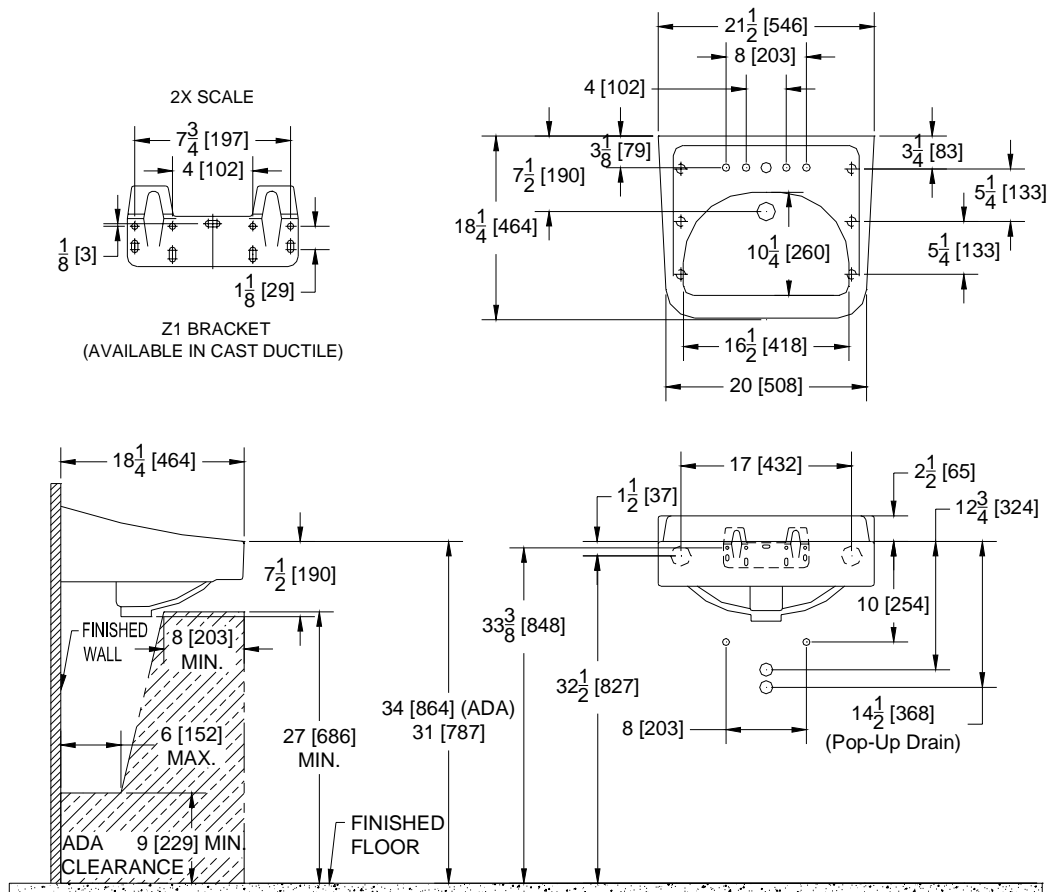
Z5340

20" x 18" Wall Hung Lavatory Rough-In

TAG _____

Rough-in dimensions for Z5340 Series

- Z5341 Lavatory with single faucet hole
- Z5344 Lavatory with 4" center faucet holes
- Z5348 Lavatory with 8" center faucet holes



These dimensions and specifications are subject to change without notice.

Fixture dimensions meet ANSI/ASME standard A112.19.2 and CAN/CSA B45 requirements.

Meets the American Disabilities Guidelines and ANSI A117.1 requirements when lavatory is installed 34" [864mm] from finished floor.



Note: Rough-in for concealed arm carrier, see Zurn Z-1231 Rough-in sheet.

Zurn Plumbing Products Group Commercial Brass and Fixtures Operation

2640 South Work Street • Falconer, NY 14733 • Phone: 716-665-1132 • Fax: 716-665-1135 • www.zurn.com