

FOR NON-FREEZING AREAS ONLY.

The Model 74, B74, and RB74 are anti-siphon protected wall hydrants designed for use in mild climate areas or within temperature controlled malls and plazas.

SPECIFICATIONS:

VACUUM BREAKER – ANTI-SIPHON - NIDEL® Model 34HF with 3/4 inch male hose thread, approved under ASSE Standard 1011, Canadian Standards Association and listed by IAPMO®.

VALVE SEAT – Permanent type brass valve body with hemispherical seating surface.

NO LEAD SOLDER - All solder joints.

STEM – Hardened stainless steel stem resists damage.

PACKING – EPDM rubber with adjustable packing nut.

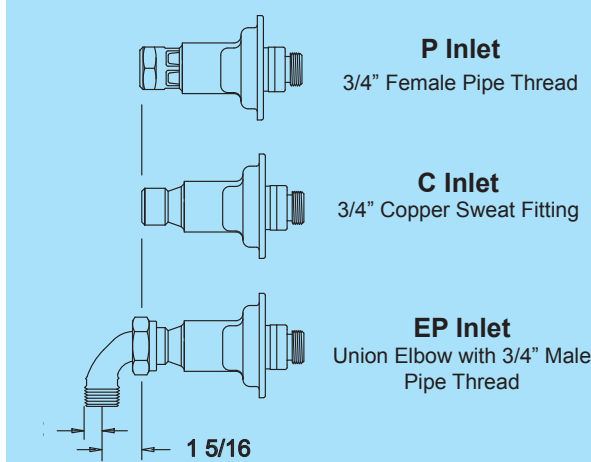
TEE KEY – Loose key operates hydrant.

INLETS – As shown.

MAX PRESSURE – 125 p.s.i.

MAX TEMPERATURE - 120° F

SHIPPING WEIGHT – **Model 74:** 3.1 lbs.
Model B74: 11.1 lbs.
Model RB74: 7.9 lbs.

Inlet Descriptions**Specify as follows:**

Wall hydrant shall be Woodford Model 74 (exposed type), B74 or RB74 (concealed box type), with anti-siphon vacuum breaker listed by ASSE, CSA and IAPMO. 3/4" inlet and outlet (specify type of inlet). Hardened stainless steel operating stem. Packing nut secured with lock nut. Permanent type valve body with large hemispherical seating surface. Exterior finish to be Chrome Plated (options: Polished Brass or Rough Brass). Loose tee key to be furnished with each hydrant.

When ordering, specify model number, inlet and finish.

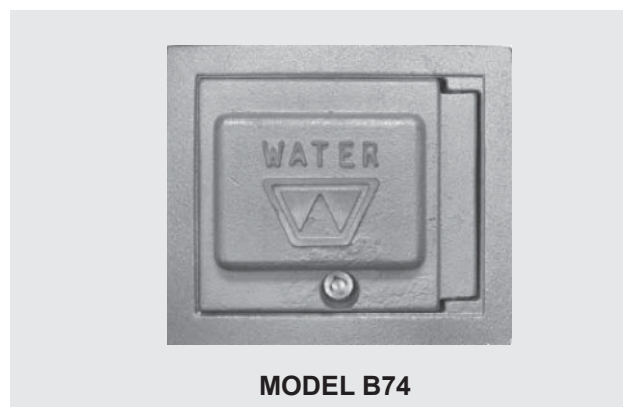
WOODFORD

Anti-Siphon Close Coupled Wall Hydrants

Model 74/B74/RB74

**Model 74****Exterior Finish:**

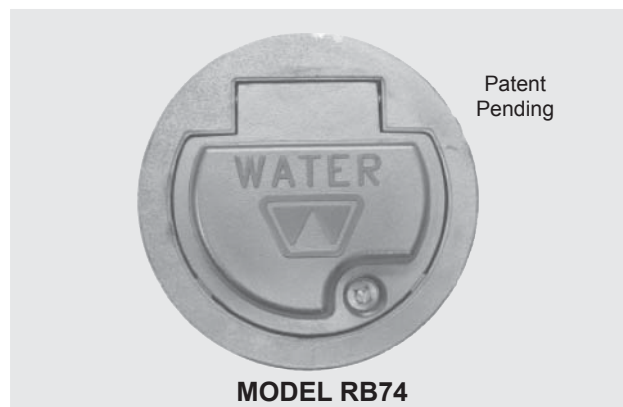
Standard - Chrome (CH)
Optional - Brass (BR) Polished Brass (PB)

**MODEL B74**

Square Box & Door - Optional: Flat Door (F)

Exterior Finish:

Standard - Chrome (CH)
Optional - Brass (BR) Polished Brass (PB)

**MODEL RB74**

Optional Round Box & Door

Exterior Finish:

Standard - Chrome (CH)
Install through 6" diameter hole.

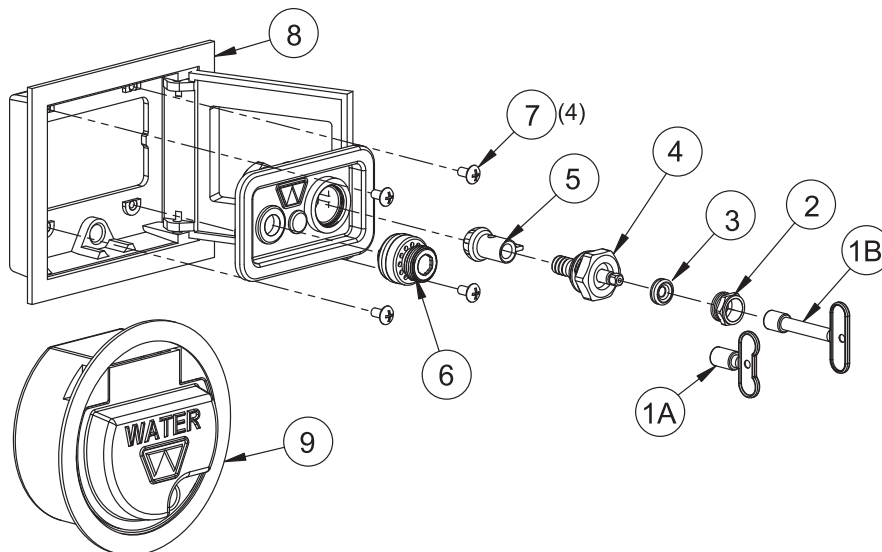
WOODFORD



**Mounting Bracket
Included With B74**

Adjust and fasten bracket
in stud wall. Attach box
assembly to bracket for
easy installation.

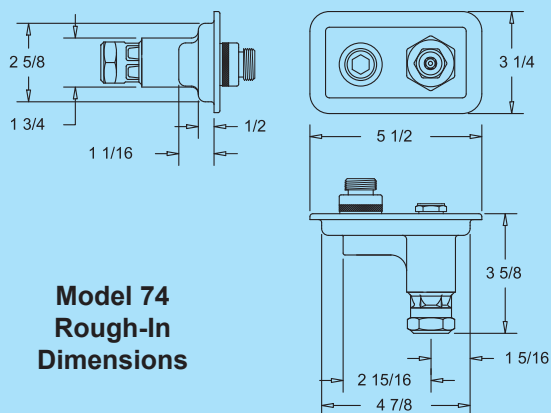
May be ordered as separate item:
RK-Bracket



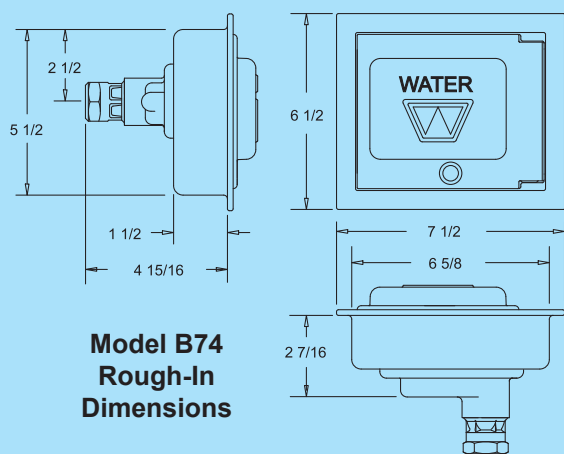
MODEL 74/B74/RB74 PARTS LIST

ITEM	PART#	DESCRIPTION
1A	50009	Tee Key
1B	50010	Long Tee Key (Box Models)
2	30109 30107	Packing Nut - chrome Packing Nut - brass
3	30247	EPDM Packing
4	55177 55176	Head Nut Assembly - chrome Head Nut Assembly - brass
5	55105	Yoke Nut & Valve Assembly
6	34HF-CH 34HF-BR	Vacuum Breaker - chrome Vacuum Breaker - brass
7	51049	Truss Head Screws (4)
8	74BX	Square Box/Door Assembly - chrome standard
9	RB74-BX	Round Box/Door Assembly - chrome
	RK-71	Chrome Repair Kit (Includes Items 1-5)

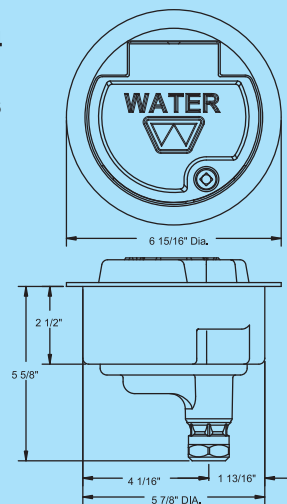
**Model 74
Rough-In
Dimensions**



**Model B74
Rough-In
Dimensions**



**Model RB74
Rough-In
Dimensions**



Manufactured under one or more of the following patents: U.S. Patents: 3,414,001; 4,178,956; 4,316,481; 4,532,954
D216,790; D216,791; D277,365; D277,366; Canada Patents: 852,529; 865,995; 1,146,438

For more information contact...

WOODFORD MANUFACTURING COMPANY

2121 Waynoka Road, Colorado Springs, Colorado 80915 • Phone: (800) 621-6032 • Fax: (800) 765-4115

To view our complete product line visit: www.woodfordmfg.com or email: sales@woodfordmfg.com

A Division Of WCM Industries, Inc.