



The Model 24 and B24 are anti-siphon, vacuum breaker protected wall faucets designed for use in mild climate areas. The Model B24 is enclosed in a flush mounted wall box. Both models are designed to blend with modern architecture for installation on or in homes, service stations, churches, motels, drive-in restaurants, etc. The Model Y24 is designed to be used on a stand pipe in the lawn and garden, etc.

#### SPECIFICATIONS:

##### VACUUM BREAKER - ANTI-SIPHON:

- NIDEL® Model 34HF with ¾ inch male hose thread
- ASSE Standard 1011 approved
- IAPMO® listed
- Canadian Standards Association

**EPDM PACKING:** Prevents leaking.

**PACKING NUT:** Adjustable brass nut with deep stem guard.

**VALVE SEAT:** Standard "O" size washer.

**HANDLES:** Furnished with polycarbonate wheel handle and loose tee key.

**Optional:** Metal wheel handle.

**INLETS:** Model 24 as shown below.  
Model B24: 24P- ½ or 24P ¾ only.  
Model Y24: ¾ " FPT.

**MAX PRESSURE:** 125 p.s.i.

**MAX TEMPERATURE:** 120° F

**SHIPPING WEIGHT:** (per unit)

**MODEL 24 & Y24:** 1 lb

**MODEL B24:** 13 lbs (brass or chrome box)  
6 lbs (aluminum box)

#### Inlet Descriptions

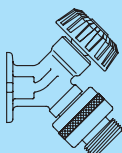
##### MODEL 24/B24

P-½ Inlet

½" FPT

P-¾ Inlet

¾" FPT



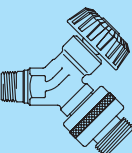
##### MODEL 24 ONLY

CP Inlet

COMBINATION

½" COPPER TUBE

½" MPT



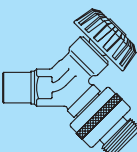
##### MODEL 24 ONLY

C Inlet

COMBINATION

½" COPPER TUBE

¾" COPPER TUBE



## Anti-Siphon Wall Faucets

## Model 24/B24/Y24

WOODFORD

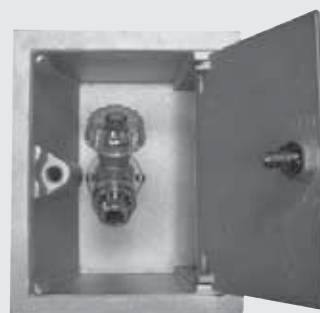


**MODEL 24**

#### Exterior Finish:

Standard - Chrome (CH)

Optional- Rough Brass (BR) or Polished Chrome (PC)



**MODEL B24**

#### Exterior Finish:

Standard - Chrome (CH)

Optional- Rough Brass (BR) or Polished Brass (PB)

Other Options: Anodized Aluminum Box (AL)

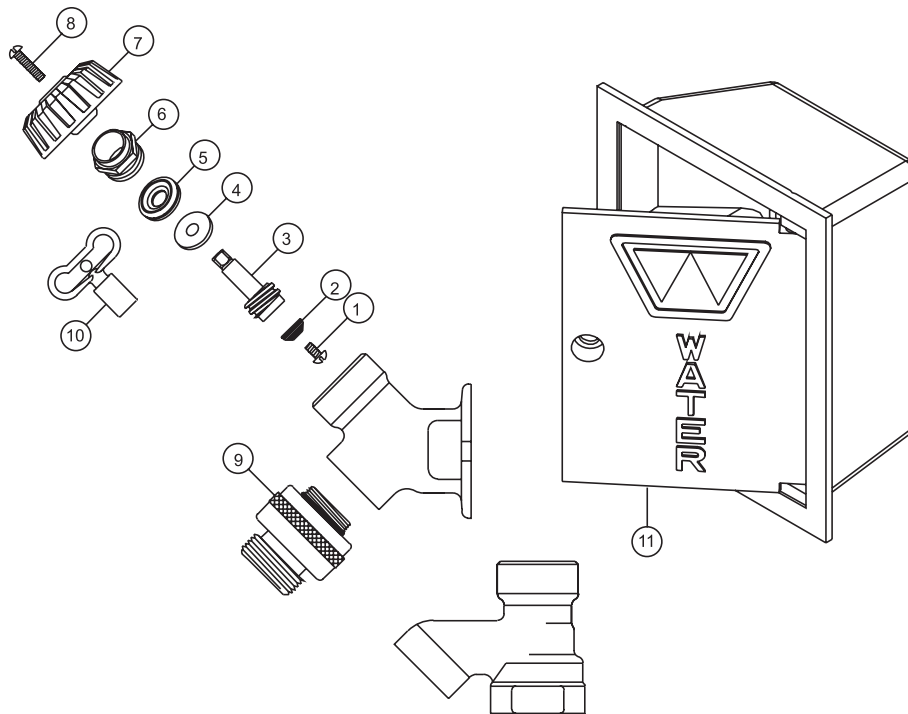


**MODEL Y24**

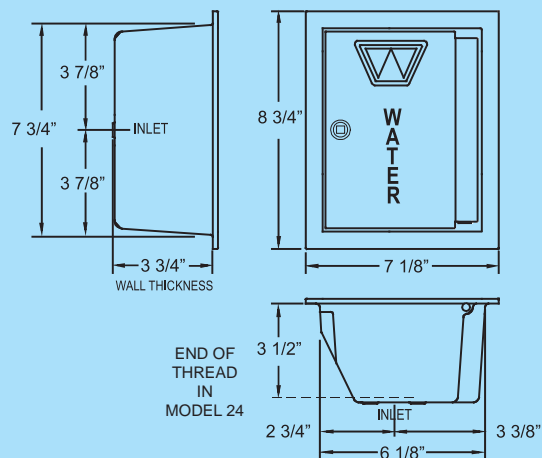
#### Exterior Finish:

Standard - Chrome (CH)

Optional- Rough Brass (BR) or Polished Chrome (PC)

**WOODFORD****MODEL 24/B24/Y24 PARTS LIST**

ITEM	PART#	DESCRIPTION
1	30009	Washer Screw
2	30008	Washer
3	30104	Operating Stem
4	30105	Packing Support Washer
5	30247	EPDM Packing
6	30109	Packing Nut - Chrome
	30107	Packing Nut - Brass
7	30120	Wheel Handle - Clear
	30233	Wheel Handle - Tan
8	30121	Handle Screw - Nickel
	30002	Handle Screw - Brass
9	34HF-CH	34HF Vacuum Breaker - Chrome
	34HF-BR	34HF Vacuum Breaker - Brass
10	RK-STK	Tee Key
11	B24BX	Box/Door Assembly - Chrome
	B24BX-BR	Box/Door Assembly - Brass
	B24BX-PB	Box/Door Assembly - Polished Brass
	B24BX-AL	Box/Door Assembly - Anodized Aluminum
	RK-24	Chrome Repair Kit (Includes items 1-8)
	RK-H34	Brass Repair Kit (Includes items 1-8)

**MODEL B24  
Rough-In Dimensions**

Manufactured under one or more of the following patents: U.S. Patents: 3,414,001; 3,543,786; 4,178,956; 4,316,481; D216,790; D216,791; D277,365; D277,366; Canada Patents: 822,458; 852,529; 865,995

*For more information contact...*

**WOODFORD MANUFACTURING COMPANY**

2121 Waynoka Road, Colorado Springs, Colorado 80915 • Phone: (800) 621-6032 • Fax: (800) 765-4115

To view our complete product line visit: [www.woodfordmfg.com](http://www.woodfordmfg.com) or email: [sales@woodfordmfg.com](mailto:sales@woodfordmfg.com)

A Division Of WCM Industries, Inc.