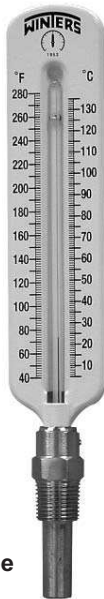


# TSW Hot Water Thermometer



Dial Type



Scale Type

## Description & Features:

- An economical and accurate way to measure air or water temperatures
- Separable thermowell
- Bi-metallic element (dial type only)
- Dual scale (°F & °C)
- Dial type or vertical scale type
- Easy to install
- 1/2" NPT process connection
- 1 year warranty

## Applications:

- Hot water lines, boilers and hydronic heating

Specifications	Dial Type
Dial	2.5" dial (63mm), aluminum, painted white with black and red markings
Case	Aluminum
Lens	Glass
Ring	Steel, chrome plated
Thermowell	Brass (HPB59-1), 1/2" NPT standard, separable
Stem	Brass
Movement	Bi-metallic element
Pointer	Aluminum, painted black
Recalibrator	Standard
Accuracy	±1%

Specifications	Scale Type
Scale/Case	8" (200mm) scale with steel case, painted white with black markings
Tube	#N-16 glass
Fill Liquid	Kerosene, tinted red
Thermowell	Brass (HPB59-1), 1/2" NPT standard, separable
Accuracy	±1%

## Order Codes Dial Type (products in bold are normally in stock)

Range	Connection	Code
30°F to 250°F & 0°C to 120°C	1/2" NPT centre back	<b>TSW174</b>
	3/4" Sweatwell	<b>TSW174-SW</b>

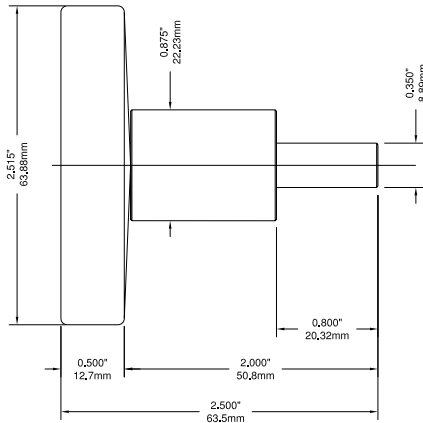
Note: Other ranges, stem lengths, dial and thread sizes available upon request

## Order Codes Scale Type (products in bold are normally in stock)

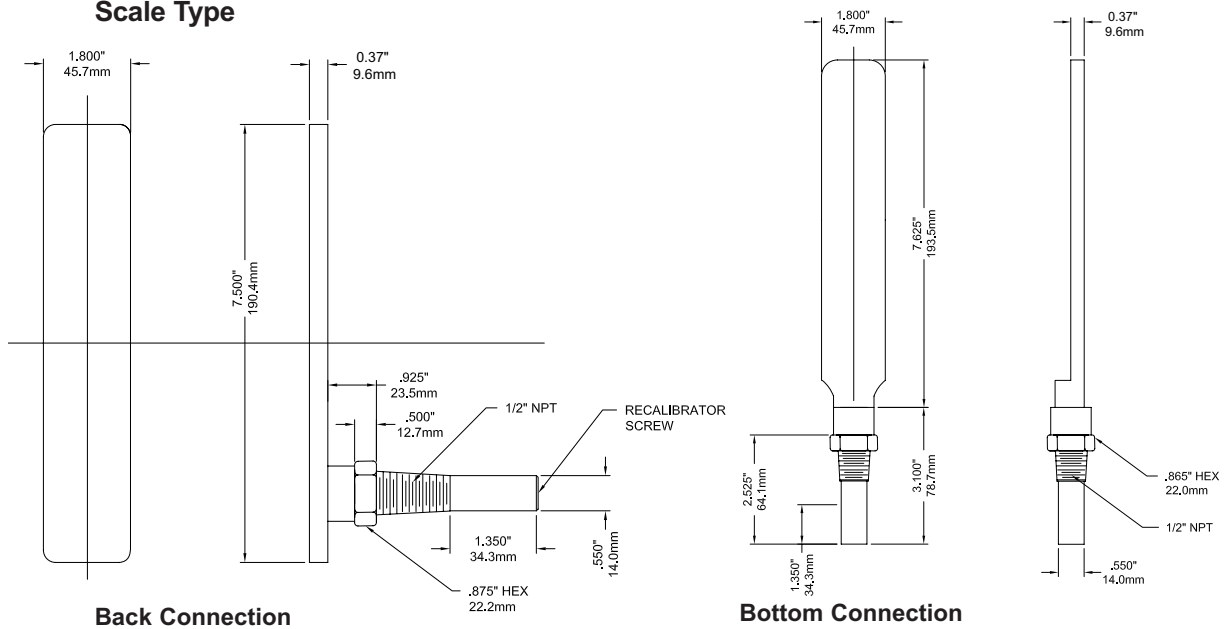
Range	Connection	Code
40°F to 280°F & 5°C to 135°C	Straight	<b>TSW172</b>
40°F to 280°F & 5°C to 135°C	Angle	<b>TSW173</b>

Note: Other ranges and sizes available upon request

## Dial Type



## Scale Type



## Back Connection

## Bottom Connection

## Series Number (for custom, non-standard product)



### SERIES

### TYPE

172 Scale Type

173 Scale Type

174 Dial Type

174SW Dial Type

### CONNECTION TYPE

3/8"

1/2"

174 with Sweatwell

Special

### CONNECTION THREAD

NPT

BSP

BSPT

2

3

4

5

3

2

4

Z

T

S

A