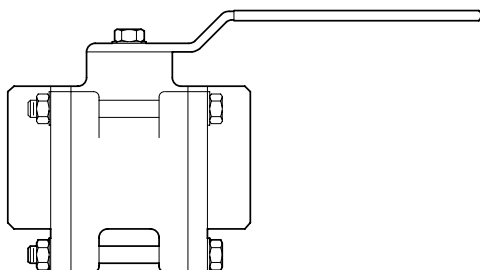


Model 800C

Swing Away Ball Valves
For Liquid or Gas Installations



FEATURES

Sizes: ☐ 1/2" ☐ 3/4" ☐ 1" ☐ 1 1/4"
☐ 1 1/2" ☐ 2" ☐ 2 1/2" ☐ 3"

Maximum pressure 400 PSI WOG
Copper connections (FC) ANSI B16.22

OPTIONS

- ☐ - with female copper inlet x outlet
- ☐ CL - with copper "L" tube extensions

ACCESSORIES

- ☐ Repair kit; o-rings, stem and seats
- ☐ Bracket for locking ball valve handle in open position (Model BVLCK)
- ☐ Bracket and padlock (Model BVLCKP)

APPLICATION

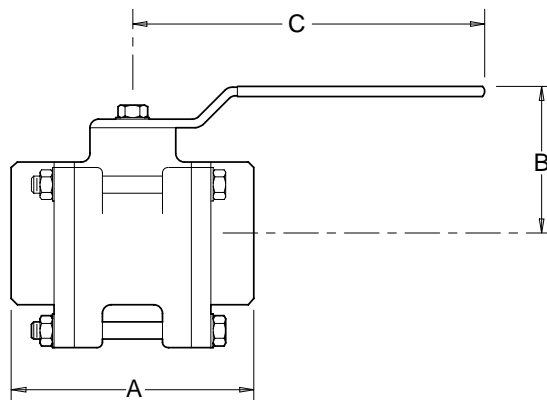
Designed for installation on liquid or medical gas lines as a means of positive shut-off. The "swing away" design allows for repair and maintenance without removing the device from the line.

MATERIALS

Main valve body Forged brass (1/2"-1")
Cast bronze ASTM B 584 (1 1/4"-3")
Ball Brass ASTM B 16, chrome plated
Seat & packing Teflon
O-rings Buna Nitrile, NSF Listed

SPECIFICATION

The three piece swing away ball valve shall consist of a copper alloy body, two tailpieces, a hard-chromed copper alloy ball, two Teflon seats, a stem and coated handle. The stem shall be blow-out proof and the ball & seats replaceable in-line without the use of special tools. Tailpieces shall be designed to accept sweated copper tube or provided with copper tailpiece extensions. The three piece swing away ball valve shall be a WILKINS Model 800C.



DIMENSIONS & WEIGHTS (do not include pkg.)

SIZE		DIMENSIONS (approximate)						WEIGHTS	
		A		B		C			
in.	mm	in.	mm	in.	mm	in.	mm	lbs.	kg.
1 1/2	15	2 1/8	54	1 5/8	41	3 7/8	98	1	0.5
3/4	20	2 3/4	70	1 7/8	48	3 7/8	98	1	0.5
1	25	3 1/2	89	2	51	4 1/2	114	2	1.0
1 1/4	32	4	102	2 1/3	58	4 1/2	114	4	1.8
1 1/2	40	4 7/8	124	2 7/8	73	6	152	7	3.0
2	50	5 1/2	140	3 1/8	79	6	152	9	4.0
2 1/2	65	6 3/8	162	3 5/8	92	6	152	17	8.0
3	80	6 3/4	172	4 3/8	111	12	305	22	10.0

DOCUMENT NO. BV-800C	REV. 10/99
-------------------------	---------------