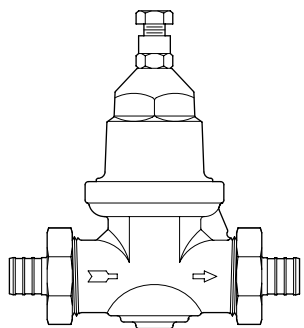


Model BR4DUPEX

Water Pressure Reducing Valve
with Double Union PEX Connection



FEATURES

Sizes: ☐ 3/4" ☐ 1"

Maximum working water pressure 400 PSI
Maximum working water temperature 180°F

OPTIONS

(Suffixes can be combined)

☐ SC - with sealed cage bell

ACCESSORIES

☐ Repair kit

APPLICATION

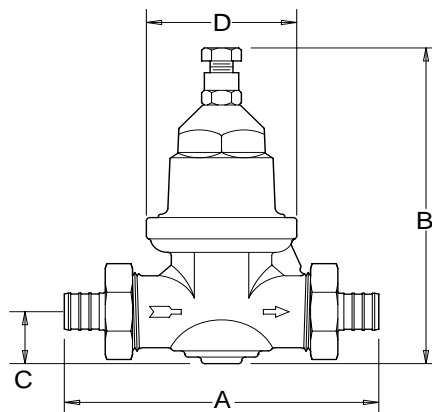
Designed for installation on potable water lines to reduce high inlet pressure to a lower outlet pressure. The one piece cartridge design enables the regulator to react in a smooth and responsive manner to changes in system flow demand, while at the same time, providing protection from inlet pressure changes. The custom brass tailpieces allow for direct connection to cross-linked polyethylene (PEX) tubing with standard crimp connections and without the use of solders, solvents, chemicals and flame.

STANDARDS COMPLIANCE (APPLIES TO MODEL BR4)

- ☐ ASSE® Listed 1003
- ☐ IAPMO® Listed
- ☐ CSA® Certified
- ☐ City of Los Angeles Approved

MATERIALS

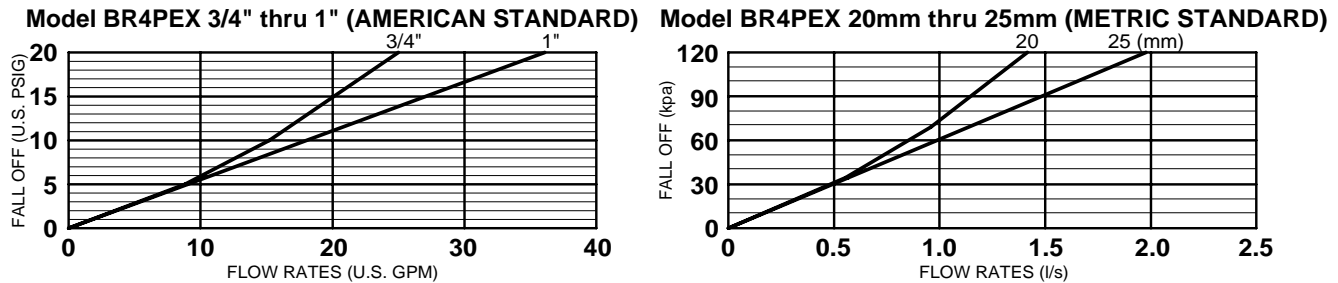
Main valve body	Cast Bronze ASTM B 584
Bell housing	Composite thermoplastic
Internals	Stainless Steel, 300 Series
Elastomers	EPDM (FDA approved) Buna Nitrile (FDA approved)
Polymers	Delrin™, NSF Listed
Springs	Stainless Steel, 300 Series



DIMENSIONS & WEIGHTS (do not include pkg.)

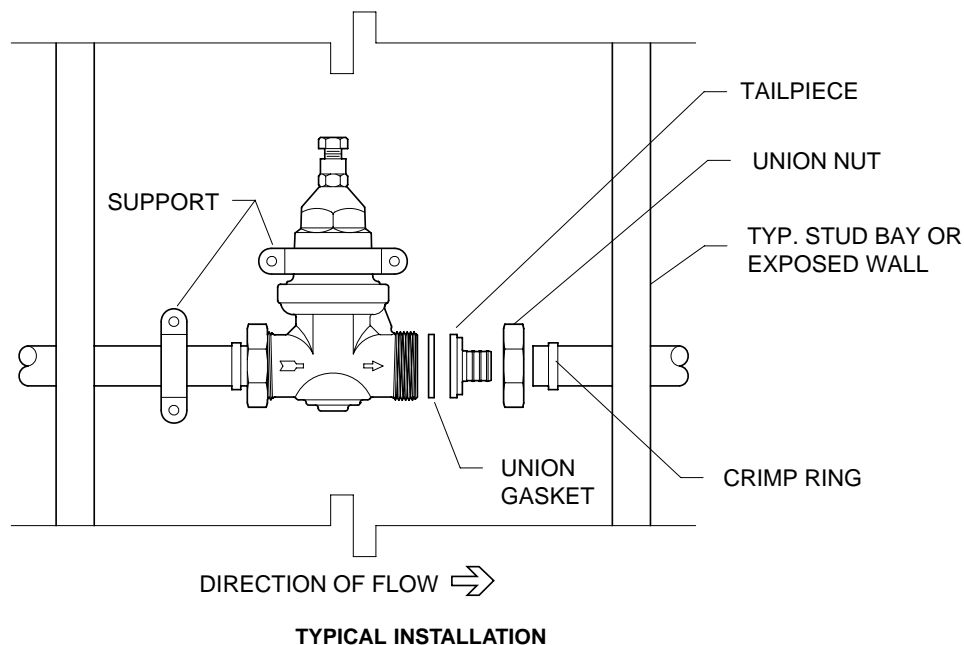
SIZE		DIMENSIONS (approximate)										WEIGHT	
		CONNECTION	A		B		C		D				
in.	mm		in.	mm	in.	mm	in.	mm	in.	mm		lbs.	kg.
3/4	20	PEX FITTING	4 1/2	114	6 1/4	159	1 1/8	29	2 1/2	64		3	1.5
1	25	PEX FITTING	5 1/2	140	7 3/4	197	1 1/8	29	3	76		4	2.0

FLOW CHARACTERISTICS



TYPICAL INSTALLATION

Local codes shall govern installation requirements. Unless otherwise specified, the assembly shall be installed according to the manufacturers' instructions and the latest edition of the Uniform Plumbing Code.



SPECIFICATIONS

The water pressure reducing valve shall be ASSE® Listed 1003, and supplied with two tailpieces, two union gaskets and two union nuts. The assembly shall consist of a cast bronze body and composite bell housing and shall have an adjustment bolt to adjust the downstream pressure. Tailpieces shall accommodate cross-linked polyethylene (PEX) tubing and a copper crimp ring to secure inlet and outlet tubing to the assembly. The bell housing shall be threaded to the body and shall not require the use of ferrous screws. The water pressure reducing valve shall be a WILKINS Model BR4DUPEX.