

FEATURES

Sizes: ☐ 3/4" ☐ 1"

Maximum working water pressure	300 psi
Maximum working water temperature	180° F
Reduced pressure range	0 psi to 50 psi
Factory preset	30 psi
Threaded connections (FNPT)	ANSI B1.20.1
Copper connections (FC)	ANSI B16.22

OPTIONS

(Suffixes can be combined)

- ☐ - with single union FNPT connection (standard)
- ☐ C - with FC (copper sweat) connection
- ☐ G - with pressure gauge (0-100 psi)
- ☐ LU - less union connection
- ☐ P - tapped and plugged for pressure gauge

APPLICATION

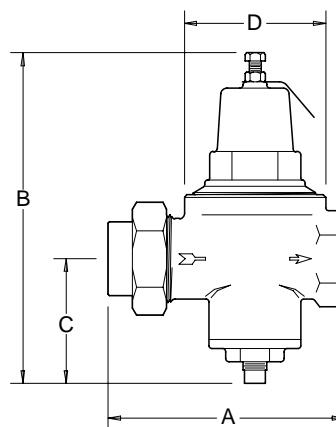
Designed for installation on potable water lines to reduce high inlet pressure to a lower outlet pressure. The balanced piston design enables the regulator to react in a smooth and responsive manner to changes in system flow demand, while at the same time, providing protection from inlet pressure changes. Pressure adjustment range (0-50 psi) makes the Model 90 most suitable to drip irrigation systems requiring lower operating pressures.

MATERIALS

Body & cover	Cast bronze, ASTM B 584
Bell housing	Cast bronze, ASTM B 584
Stem & plunger	Brass, ASTM B 16
Internals	Stainless steel, 300 Series
Elastomers	EPDM (FDA approved) Buna nitrile (FDA approved)
Springs	Oil tempered wire, ASTM A 229
Cap gasket	Natural vulcanized fibre

ACCESSORIES

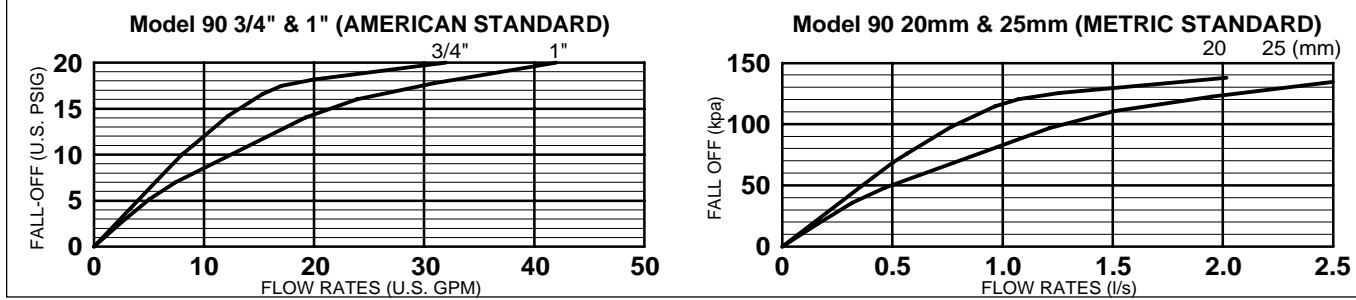
- ☐ Repair kit (rubber only)



DIMENSIONS & WEIGHTS (do not include pkg.)

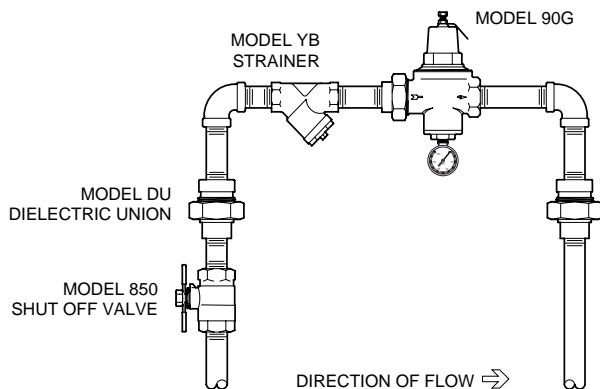
SIZE		CONNECTIONS	DIMENSIONS (approximate)								WEIGHT	
			A		B		C		D			
in.	mm		in.	mm	in.	mm	in.	mm	in.	mm	lbs.	kg.
3/4	20	SINGLE UNION	4 7/8	124	7	178	2	51	3	76	4	2.0
3/4	20	LESS UNION	3 7/8	98	7	178	2	51	3	76	4	2.0
1	25	SINGLE UNION	4 7/8	124	7 1/8	181	2 1/8	54	3 15/16	100	4	2.0
1	25	LESS UNION	4	102	7 1/8	181	2 1/8	54	3 15/16	100	4	2.0

FLOW CHARACTERISTICS

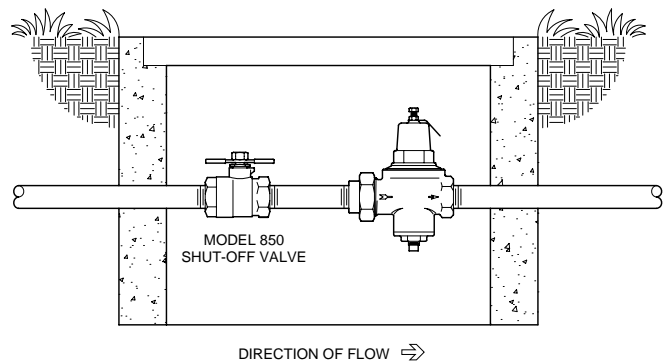


TYPICAL INSTALLATION

Local codes shall govern installation requirements. Unless otherwise specified, the assembly shall be mounted in accordance with the manufacturers' instructions and the latest edition of the Uniform Plumbing Code. The assembly shall be installed with sufficient side clearance for testing and maintenance. The Model 90 may be installed in any position. Multiple installations are recommend for wide demand variations or where the desired pressure reduction is more than 4 to 1 (ie: 200 psi inlet reduced to 50 psi outlet). **CAUTION:** Anytime a reducing valve is adjusted, a pressure gauge must be used downstream to verify correct pressure setting. Do not bottom adjustment bolt on bell housing.



TYPICAL INSTALLATION



TYPICAL INSTALLATION

SPECIFICATIONS

The pressure reducing valve shall consist of a bronze body and bell housing, a separate access cover for the stem & plunger and a bolt to adjust the downstream pressure. The bronze bell housing and access cap shall be threaded to the body and shall not require the use of ferrous screws. The assembly shall be of the balanced piston design and shall reduce pressure in both flow and no-flow conditions. The assembly shall be accessible for maintenance without having to remove the body from the line. The pressure reducing valve shall be a WILKINS Model 90.