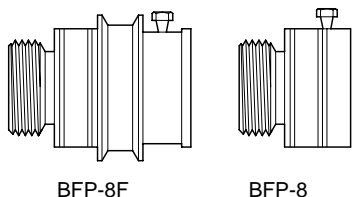


**Model BFP-8**  
Hose Bibb Vacuum Breaker



**FEATURES**

Sizes: ☐ 3/4"

Maximum working water pressure 125 PSI  
Maximum working water temperature 180°F  
Thread connection Hose Thread  
ANSI B1.20.7

**OPTIONS**

- ☐ F - with manual drain feature for freeze protection
- ☐ CH - with chrome finish (BFP-8 only)
- ☐

**ACCESSORIES**

- ☐ Hose bibb (Model 195)

**DIMENSIONS & WEIGHTS (do not include pkg.)**

MODEL	DIMENSIONS (INCHES)		WEIGHT (LBS)
	A	B	
BFP-8	1.30	1.30	0.3
BFP-8F	1.95	1.63	0.3

**APPLICATION**

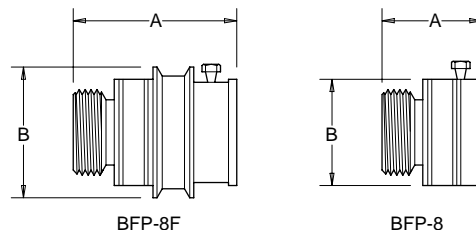
Designed for installation on potable water lines such as service sinks, laundry tubs and hose bibbs to protect against backsiphonage of polluted water into the potable water supply. A break-away set screw is included to prevent unauthorized removal. Assembly shall provide protection where a potential health hazard does not exist.

**STANDARDS COMPLIANCE**

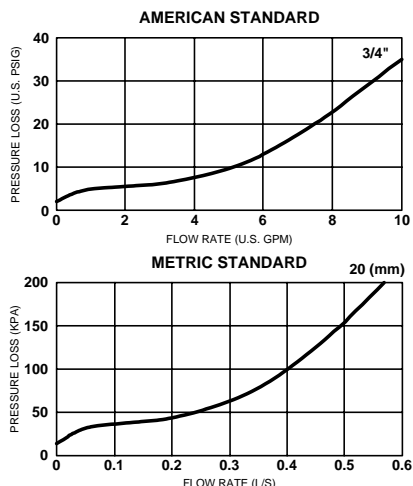
- ☐ ASSE® Listed 1011
- ☐ IAPMO® Listed
- ☐ CSA® Certified

**MATERIALS**

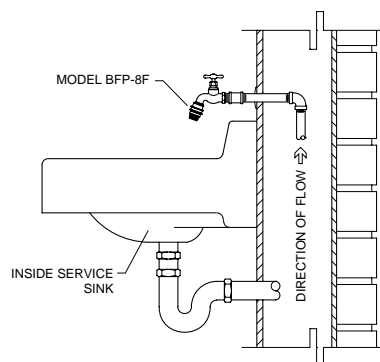
Valve body Brass, ASTM B 16  
Elastomers Buna Nitrile, FDA 21, 177.2600  
Internals Stainless steel, 300 series  
Brass, ASTM B 16  
Polymers Acetal (Delrin™), NSF Listed



**FLOW CHARACTERISTICS**



**TYPICAL INSTALLATION**



DOCUMENT NO. <b>BF-BFP8</b>	REV. <b>7/99</b>
--------------------------------	---------------------