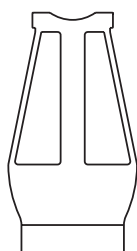
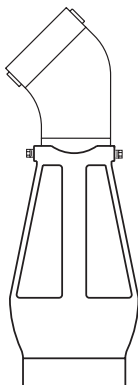


Model AG
Air Gap Adaptor Fitting



AG-4 thru AG-8



AG-9

APPLICATION

Designed for use with 1/4" thru 10" Model 975, 375, and 475 Reduced Pressure Principle Backflow Preventers on horizontal or vertical installations. Device is necessary when installing a drain line and can be mounted to the body.

MATERIALS

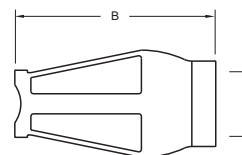
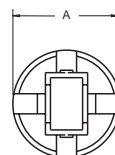
Body	Cast grey iron, epoxy painted
Elbow	Cast grey iron, epoxy painted
Bolts	Steel, zinc plated

FEATURES

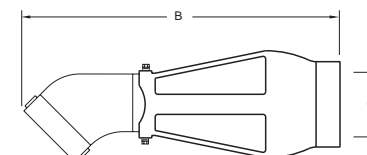
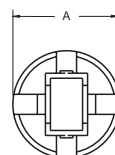
Sizes: ☐ 1/4"-1/2" ☐ 3/4"-1" ☐ 1 1/4"-2"
☐ 2 1/2"-6" ☐ 8"-10"

DIMENSIONS & WEIGHTS (do not include pkg.)

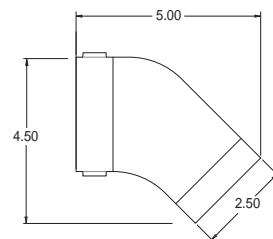
MODEL	DIMENSIONS (INCHES)					WEIGHT (LBS)
	SIZES	FOR MODEL	A	B	C OUTLET PIPE SIZE	
AG-8	1/4" - 1/2"	975	2.50	3.50	1" NPT	2.0
AG-4	3/4" - 1"	975	3.20	5.00	1" NPT	2.0
AG-5	1 1/4" - 2"	975	4.50	8.00	2" NPT	3.0
AG-6	2 1/2" - 6"	375,475,975	5.40	10.00	3" NPT	5.0
AG-7	8" - 10"	975	7.00	11.00	4" NPT	8.0
AG-9	2 1/2" - 6"	475V	5.40	14.50	3" NPT	9.0



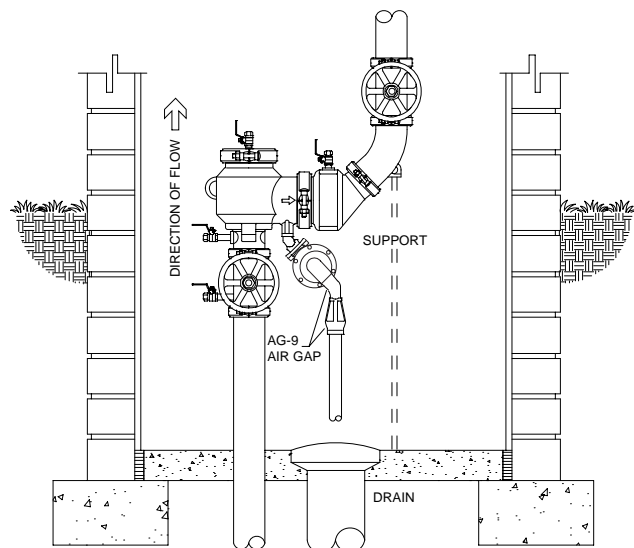
AG-4 thru AG-8



AG-9



AG-9 ELBOW



INDOOR INSTALLATION

TYPICAL INSTALLATION

Local codes shall govern installation requirements. To be installed in accordance with the manufacturers' instructions and the latest edition of the Uniform Plumbing Code.

DOCUMENT NO.	REV.
BF-AG	8/99