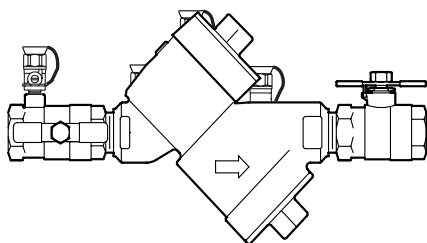


**Model 950XLTCU**  
Double Check Valve Assembly



**APPLICATION**

Designed for installation on potable water lines to protect against both backsiphonage and backpressure of polluted water into the potable water supply. Assembly shall provide protection where a potential health hazard does not exist.

**FEATURES**

Sizes: ☐ 3/4" ☐ 1" ☐ 1 1/4" ☐ 1 1/2" ☐ 2"

Maximum working water pressure 175 PSI  
Maximum working water temperature 180°F  
Hydrostatic test pressure 350 PSI  
End connections Threaded ANSI B1.20.1

**OPTIONS**

(Suffixes can be combined)

- ☐ - with full port QT ball valves (standard)
- ☐ L - less ball valves
- ☐ U - with union ball valves
- ☐ S - with bronze "Y" type strainer

**STANDARDS COMPLIANCE  
(APPLIES TO MODEL 950XL)**

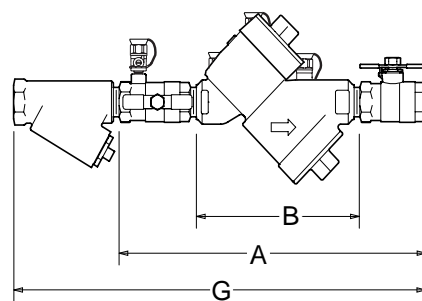
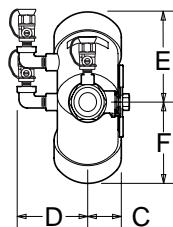
- ☐ ASSE® Listed 1015 (Horizontal and Vertical Flow-Up)
- ☐ IAPMO® Listed
- ☐ CSA® Listed
- ☐ AWWA Compliant
- ☐ UL® Classified (less shut-off valves only)
- ☐ C-UL® Classified (less shut-off valves only)
- ☐ Approved by the Foundation for Cross Connection Control and Hydraulic Research at the University of Southern California

**MATERIALS**

Main valve body Cast Bronze ASTM B 584  
Access covers Cast Bronze ASTM B 584  
Internals Stainless Steel, 300 Series  
Elastomers Silicone (FDA approved)  
Buna Nitrile (FDA approved)  
Polymers Noryl™, NSF Listed  
Springs Stainless steel, 300 series

**ACCESSORIES**

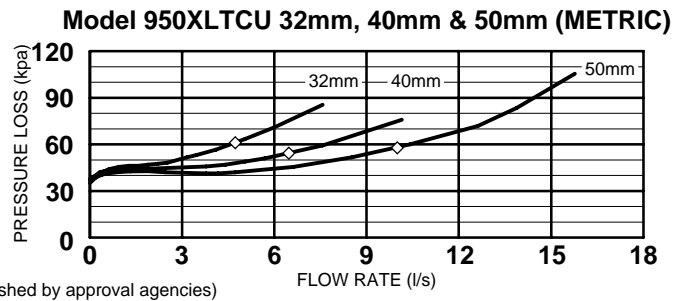
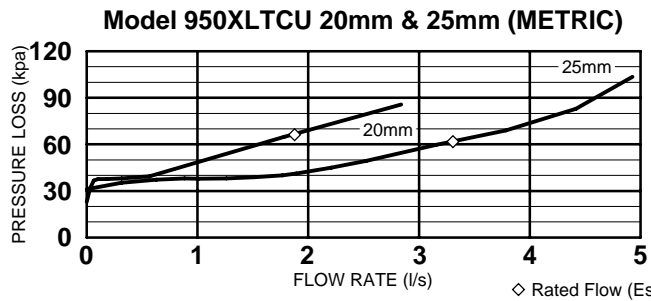
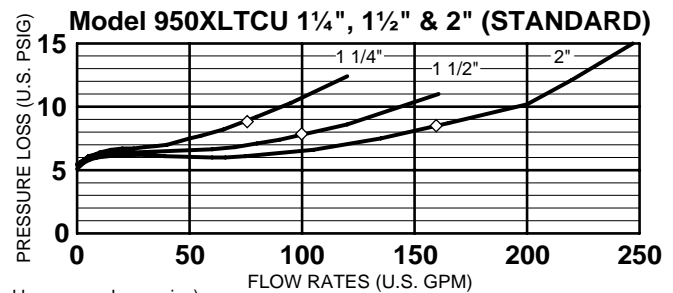
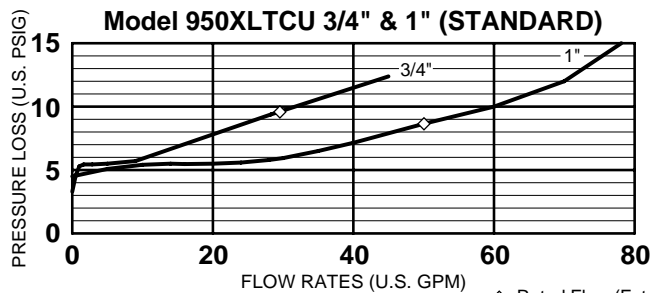
- ☐ Repair kit (rubber only)



**DIMENSIONS & WEIGHTS (do not include pkg.)**

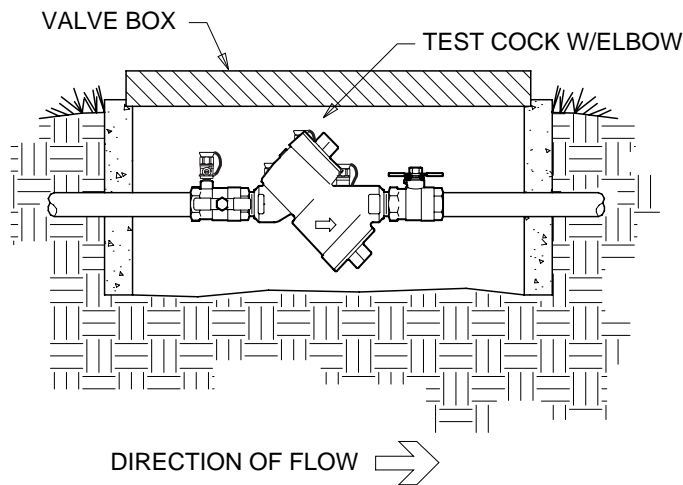
| MODEL SIZE | DIMENSIONS (INCHES) |                     |                    |      |      |      |      |       | WEIGHT (LBS)     |                  |
|------------|---------------------|---------------------|--------------------|------|------|------|------|-------|------------------|------------------|
|            | A                   | A UNION BALL VALVES | B LESS BALL VALVES | C    | D    | E    | F    | G     | LESS BALL VALVES | WITH BALL VALVES |
| 3/4"       | 11.25               | 12.50               | 7.00               | 1.50 | 3.00 | 3.50 | 3.00 | 15.00 | 5.0              | 9.0              |
| 1"         | 13.00               | 13.75               | 7.00               | 1.50 | 3.00 | 3.50 | 3.00 | 17.75 | 8.0              | 9.0              |
| 1 1/4"     | 16.50               | 18.50               | 10.58              | 2.00 | 3.50 | 4.50 | 4.50 | 21.50 | 16.0             | 21.0             |
| 1 1/2"     | 17.12               | 19.12               | 10.58              | 2.00 | 3.50 | 4.50 | 4.50 | 22.75 | 16.0             | 24.0             |
| 2"         | 18.25               | 20.00               | 10.58              | 2.00 | 3.50 | 4.50 | 4.50 | 25.12 | 16.0             | 27.0             |

## FLOW CHARACTERISTICS



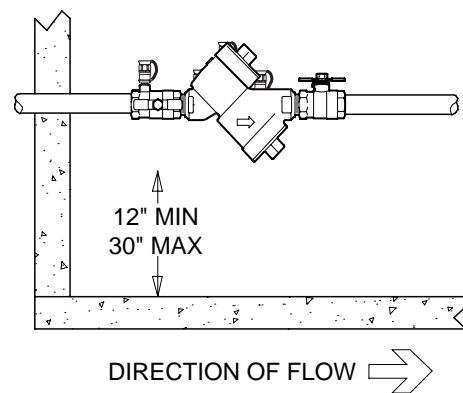
## TYPICAL INSTALLATION

Local codes shall govern installation requirements. To be installed in accordance with the manufacturer's instructions and the latest edition of the Uniform Plumbing Code. Unless otherwise specified, the assembly shall be mounted at a minimum of 12" (305mm) and a maximum of 30" (762mm) above adequate drains with sufficient side clearance for testing and maintenance. The installation shall be made so that no part of the unit can be submerged.



PIT INSTALLATION

| Capacity thru Schedule 40 Pipe |          |            |           |           |
|--------------------------------|----------|------------|-----------|-----------|
| Pipe size                      | 5 ft/sec | 7.5 ft/sec | 10 ft/sec | 15 ft/sec |
| 1/8"                           | 1        | 1          | 2         | 3         |
| 1/4"                           | 2        | 2          | 3         | 5         |
| 3/8"                           | 3        | 4          | 6         | 9         |
| 1/2"                           | 5        | 7          | 9         | 14        |
| 3/4"                           | 8        | 12         | 17        | 25        |
| 1"                             | 13       | 20         | 27        | 40        |
| 1 1/4"                         | 23       | 35         | 47        | 70        |
| 1 1/2"                         | 32       | 48         | 63        | 95        |
| 2"                             | 52       | 78         | 105       | 167       |



INDOOR INSTALLATION

## SPECIFICATIONS

The double check type backflow preventer shall be ASSE 1015 approved, and supplied with full port ball valves. The main body and access covers shall be bronze (ASTM B 584), the seat rings and all internal polymers shall be NSF® Listed Noryl™ and the seat disc elastomers shall be silicone. The first and second checks shall be accessible for maintenance without removing the device from the line. The double check shall be a WILKINS Model 950XLTCU.