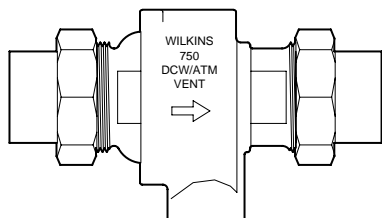


Model 750

Dual Check Valve Assembly
with Intermediate Atmospheric Vent



FEATURES

Sizes: ☐ 1/2" ☐ 3/4"

Maximum working water pressure 175 PSI
Maximum working water temperature 210°F
Threaded connections ANSI B1.20.1
Copper connections ANSI B16.22

APPLICATION

Designed for installation on boiler fill water lines to protect against both backsiphonage and backpressure of polluted water into the potable water supply. Assembly shall provide protection where a potential health hazard does not exist.

OPTIONS

- ☐ -with FNPT (female) threaded union inlet and outlet connection (standard)
- ☐ C -with FC (female) copper sweat union inlet and outlet connection

STANDARDS COMPLIANCE

- ☐ ASSE® Listed 1012
- ☐ CSA® Certified B64.3

ACCESSORIES

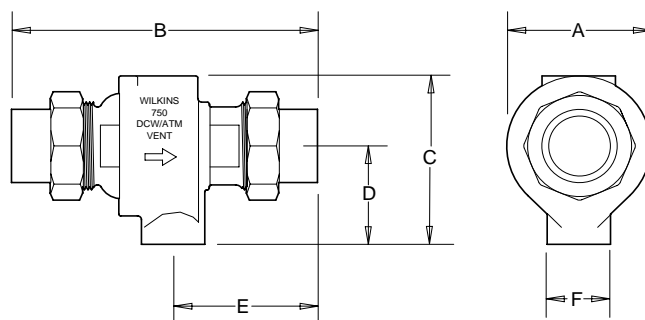
- ☐ Repair kit (RK-750)
- ☐ Hydronic Expansion Tank (Model HXT)

MATERIALS

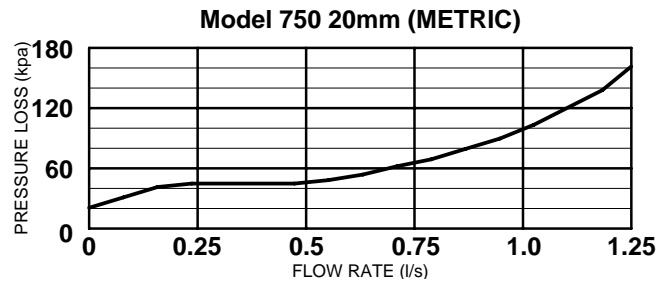
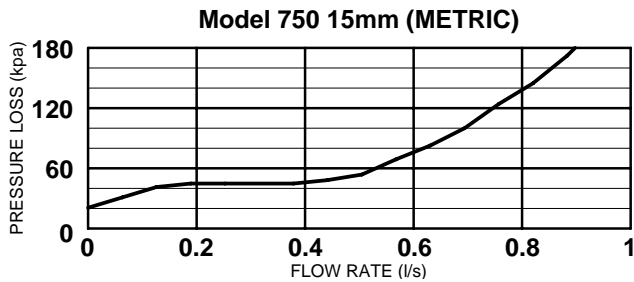
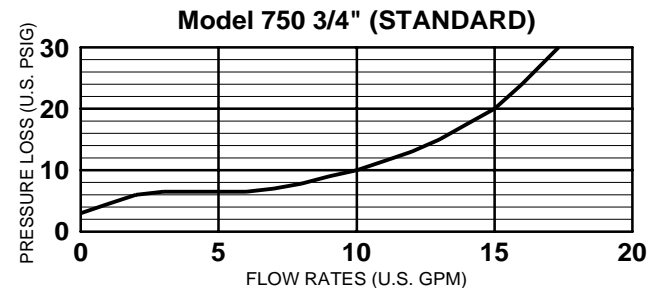
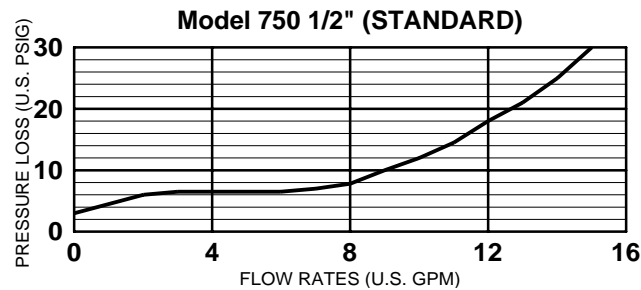
Main valve body Cast Bronze ASTM B 584
Elastomers EPDM (FDA approved)
Buna Nitrile (FDA approved)
Polymers Noryl™, NSF Listed
Springs Stainless Steel, 300 Series

DIMENSIONS & WEIGHTS (do not include pkg.)

MODEL SIZE	DIMENSIONS (INCHES)						WEIGHT (LBS)
	A	B	C	D	E	F	
1/2"	2.40	5.00	2.94	1.78	2.42	1/2" FNPT	2.0
3/4"	2.40	5.00	2.94	1.78	2.42	1/2" FNPT	2.0

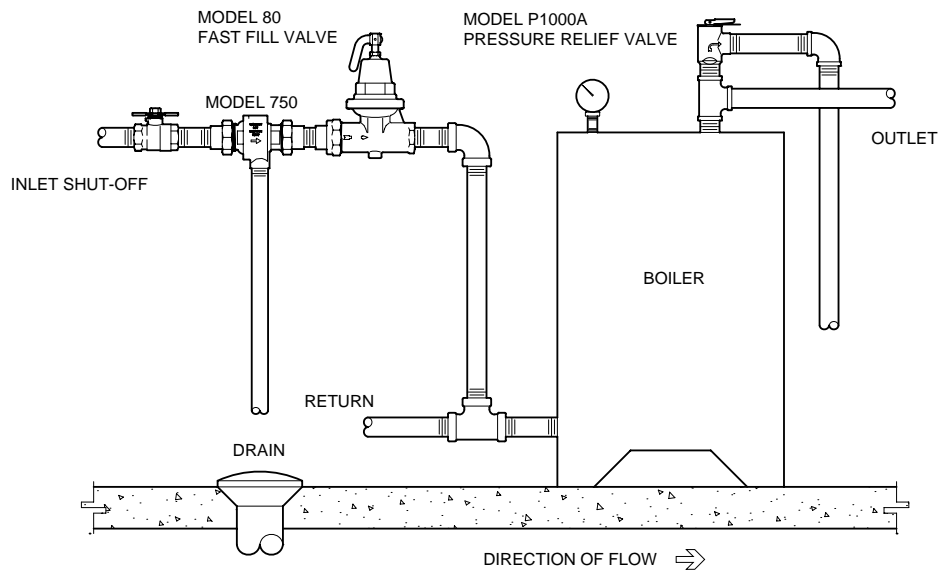


FLOW CHARACTERISTICS



TYPICAL INSTALLATION

Under certain conditions, the Model 750 may spill water from the vent port. **WARNING:** Provisions must be made to collect this spillage through an air gap or other means. The vent port should never be directly piped into a drainage ditch, sewer or pump. Under no circumstances should the vent port or drain line be plugged. Local codes shall govern installation requirements. To be installed in accordance with the manufacturers' installation instructions and the latest edition of the Uniform Plumbing Code. The installation shall be made so that no part of the unit can be submerged.



TYPICAL INSTALLATION

SPECIFICATIONS

The dual check valve assembly with intermediate atmospheric vent shall be ASSE® 1012 Listed, and supplied with two matching union tailpiece assemblies. The main body shall be cast bronze (ASTM B 584), the check valve modules shall be NORYL™, the springs shall be stainless steel (300 series) and the seat disc elastomers shall be buna nitrile. The dual check valve assembly with intermediate atmospheric vent shall be a WILKINS Model 750.