

## FEATURES

Sizes: ☐ 3/4" ☐ 1"

Maximum working water pressure	175 PSI
Maximum working water temperature	180°F
Threaded connections	ANSI B1.20.1
Copper connections	ANSI B16.22

## OPTIONS

(Suffixes can be combined)

- ☐ - with FNPT (female) threaded union inlet connection (standard)
- ☐ C - with FC (female) copper sweat union inlet connection
- ☐ CM - with CM (male) copper sweat union inlet connection
- ☐ FM - with FMTC (female) meter thread union inlet connection
- ☐ M - with MNPT (male) threaded union inlet connection

## ACCESSORIES

- ☐ Repair kit (RK-705)
- ☐ Thermal expansion tank (Model WXTP)

## APPLICATION

Designed for installation on potable water lines to protect against both backsiphonage and back pressure of polluted water into the potable water supply. Assembly shall provide protection where a potential health hazard does not exist. Applications include indoor and outdoor meter box installations as primary domestic water protection. Standard lay length allows for retrofit of existing dual checks. Lead-free body and checks ensure safe drinking water while providing maximum corrosion resistance.

## STANDARDS COMPLIANCE

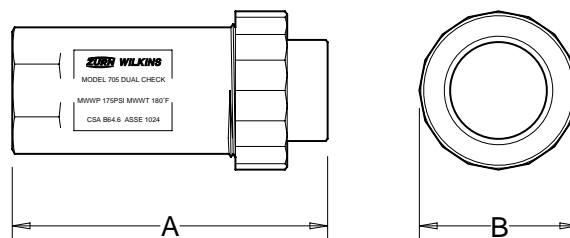
- ☐ ASSE® Listed 1024 (horizontal & vertical flow-up)
- ☐ CSA® Certified (horizontal & vertical flow-up)

## MATERIALS

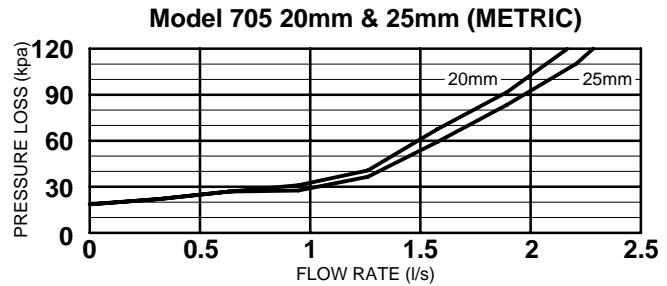
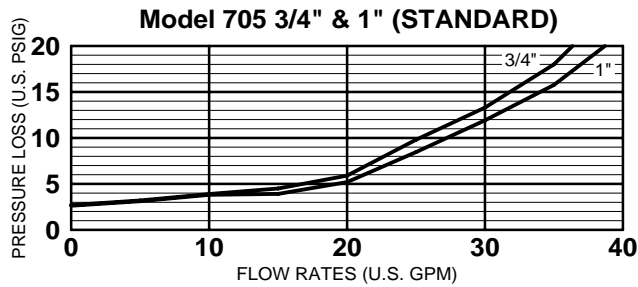
Main valve body	Noryl™, NSF Listed
Check modules	Delrin™, NSF Listed
Elastomers	Buna Nitrile (FDA approved)
Springs	Stainless steel, 300 series

## DIMENSIONS & WEIGHTS (do not include pkg.)

SIZE	DIMENSION (INCHES)		WEIGHT (LBS)
	A	B	
3/4"	4.50	2.20	1.0
1"	4.50	2.20	1.0



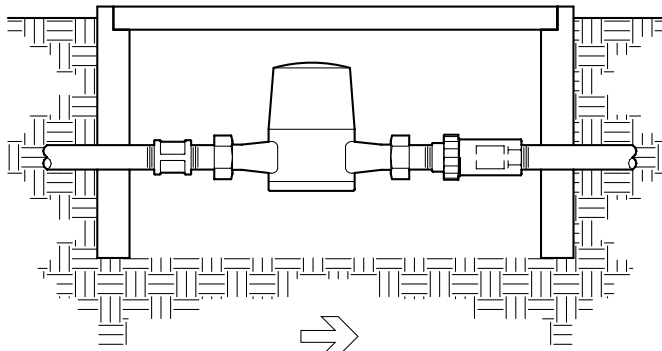
## FLOW CHARACTERISTICS



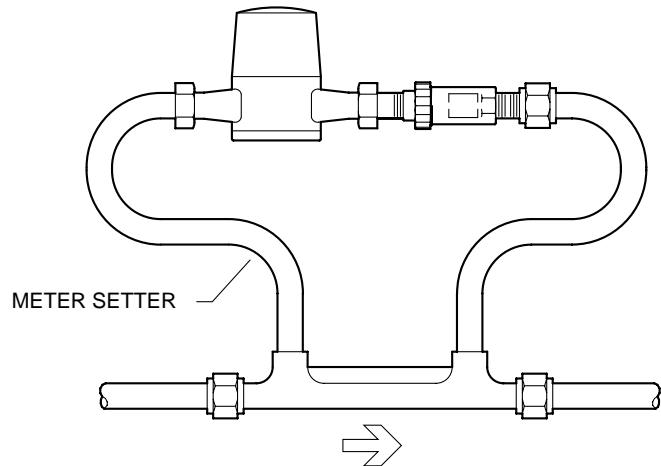
## TYPICAL INSTALLATION

Local codes shall govern installation requirements. To be installed in accordance with the manufacturer's instructions and the latest edition of the Uniform Plumbing Code. Unless otherwise specified, the assembly shall be mounted with sufficient side clearance for maintenance.

Capacity thru Schedule 40 Pipe				
Pipe size	5 ft/sec	7.5 ft/sec	10 ft/sec	15 ft/sec
1/8"	1	1	2	3
1/4"	2	2	3	5
3/8"	3	4	6	9
1/2"	5	7	9	14
3/4"	8	12	17	25
1"	13	20	27	40
1 1/4"	23	35	47	70
1 1/2"	32	48	63	95
2"	52	78	105	167



PIT INSTALLATION



METER SETTER INSTALLATION

## SPECIFICATIONS

The dual check valve backflow preventer shall be ASSE® 1024 Listed and CSA B64.6 Listed. The main body shall be Noryl™ and utilize a union female inlet thread connection. The dual check valve backflow preventer shall be a WILKINS Model 705.