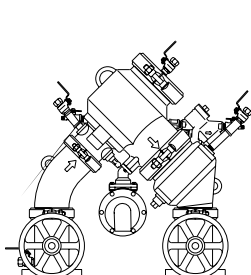
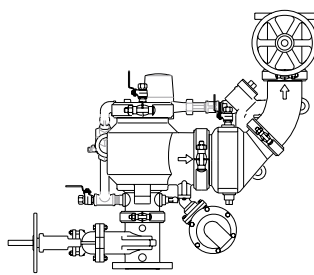


**Model 475DA/475DAV**Reduced Pressure Detector Assembly  
(Patent No. 5,913,331)

MODEL 475DA



MODEL 475DAV

**FEATURES**Sizes: ☐ 4" ☐ 6"

Maximum working water pressure 175 PSI

Maximum working water temperature 140°F

Hydrostatic test pressure 350 PSI

End connections

(Grooved for steel)

AWWA C606-87

(Flanged)

ANSI B16.1

Class 125

**OPTIONS**

(Suffixes can be combined)

- ☐ - with OS & Y gate valves (standard)
- ☐ L - less shut-off valves (grooved body connections)
- ☐ LM - less water meter
- ☐ - with remote reading meter
- ☐ - with gpm meter (standard)
- ☐ - with cu ft/min meter
- ☐ V - vertical flow up configuration
- ☐ G - with groove end gate valves
- ☐ FG - with flanged inlet gate connection and grooved outlet gate connection
- ☐ FS - with cast iron wye type strainer
- ☐ FSC - with epoxy coated wye type strainer

**ACCESSORIES**

- ☐ Airgap (Model AG-6 for 475DA; Model AG-9 for 475DAV)
- ☐ Repair kit (rubber only)
- ☐ Thermal expansion tank (Model WXTP)
- ☐ Valve setter (Model FLS or MJS or MJMJS)
- ☐ Gate valve tamper switch (OSY-40)
- ☐ Flange by groove adapter (FLA)

**APPLICATION**

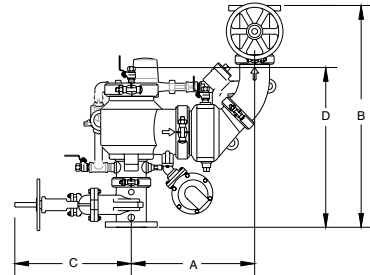
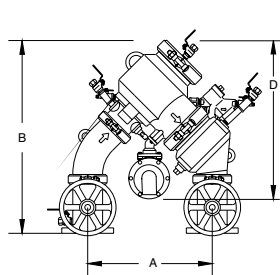
Designed for installation on potable water lines in fire sprinkler systems to protect against both backsiphonage and backpressure of contaminated water into the potable water supply. Assembly shall provide protection where a potential health hazard exists.

**STANDARDS COMPLIANCE**

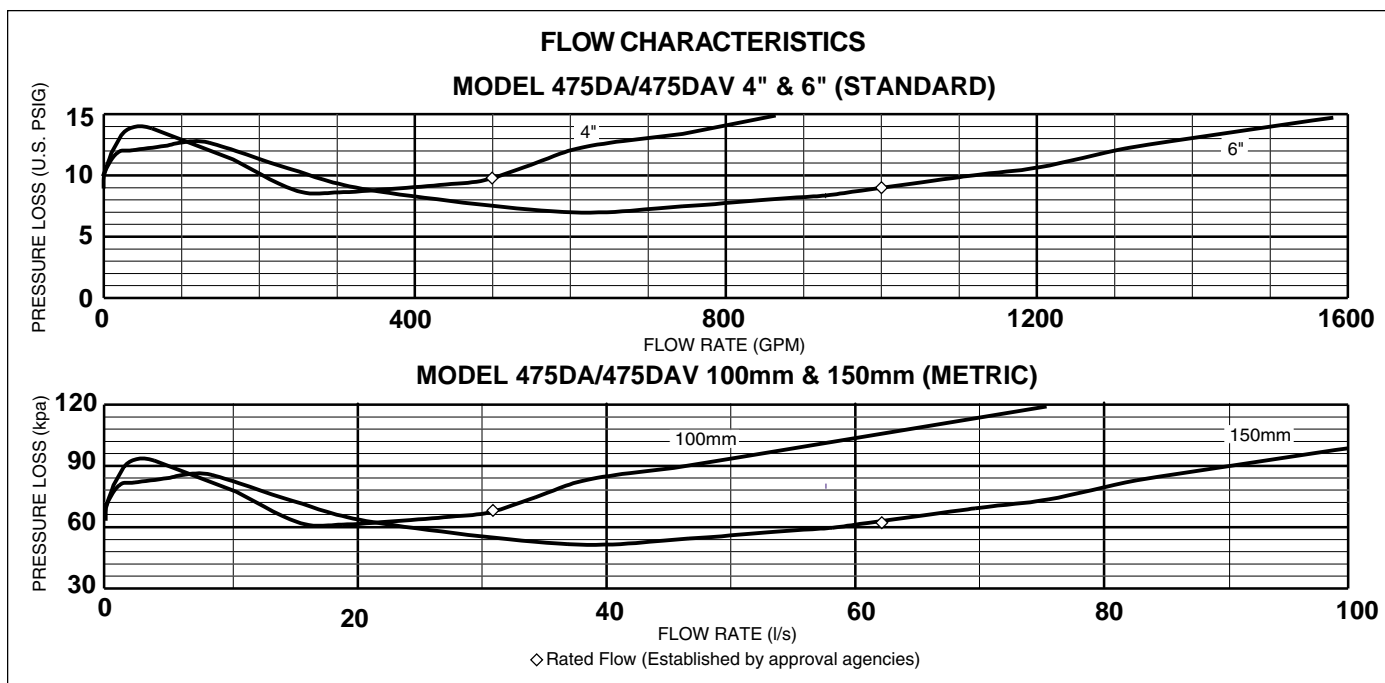
- ☐ ASSE® Listed 1047
- ☐ UL® Classified
- ☐ C-UL® Classified
- ☐ FM® Approved

**MATERIALS**

Main valve body	Ductile Iron ASTM A 536 Grade 4
Access covers	Ductile Iron ASTM A 536 Grade 4
Coatings	FDA Approved fusion epoxy finish
Fasteners	Stainless Steel, 300 Series
Elastomers	EPDM (FDA approved)
	Buna Nitrile (FDA approved)
Polymers	NORYL™, NSF Listed
Springs	Stainless steel, 300 series

**DIMENSIONS & WEIGHTS (do not include pkg.)**

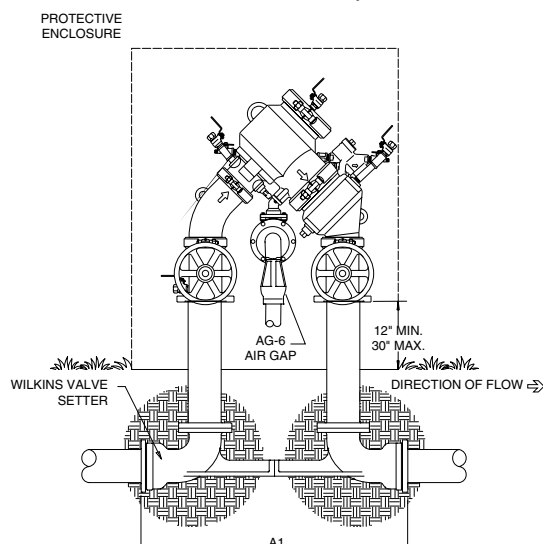
MODEL SIZE	DIMENSIONS (approximate)																WEIGHT			
	A		A1 SETTER END TO END FLS		A1 SETTER END TO END MJS		B WITH GATE VALVES		B LESS GATE VALVES		C OS&Y OPEN		C OS&Y CLOSED		D		LESS GATE VALVES		OS&Y GATE VALVES	
	in.	mm	in.	mm	in.	mm	in.	mm	in.	mm	in.	mm	in.	mm	in.	mm	lbs.	kg	lbs.	kg
4" 475DA	18 5/16	465	31 5/16	795	29 5/16	745	30	762	21	533	22 3/4	578	18 1/4	464	23 3/16	589	113	51.3	303	137.6
4" 475DAV	18 7/8	479	N/A	N/A	N/A	N/A	36 1/2	907	18 1/2	470	22 3/4	578	18 1/4	464	21	533	113	51.3	303	167.6
6" 475DA	18 13/16	478	34 3/4	883	32 3/4	832	35 1/2	902	25	635	30 1/8	765	23 3/4	603	26	660	187	84.9	487	221
6" 475DAV	21	533	N/A	N/A	N/A	N/A	42	1067	21	533	30 1/8	765	23 3/4	603	22	559	187	84.9	487	221



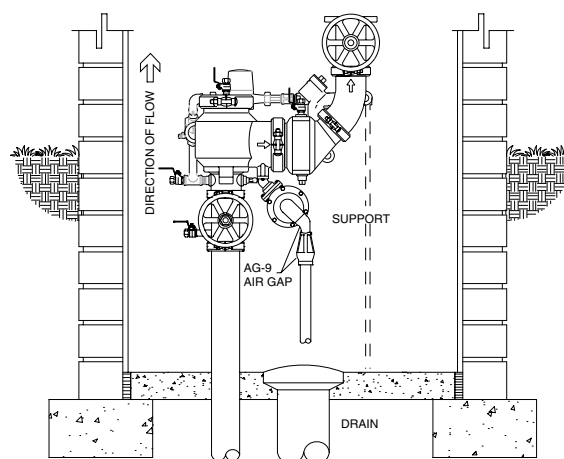
## TYPICAL INSTALLATION

Local codes shall govern installation requirements. To be installed in accordance with the manufacturers' instructions and the latest edition of the Uniform Plumbing Code. Unless otherwise specified, the assembly shall be mounted at a minimum of 12" (305mm) and a maximum of 30" (762mm) above adequate drains with sufficient side clearance for testing and maintenance. The installation shall be made so that no part of the unit can be submerged.

Capacity thru Schedule 40 Pipe (GPM)				
Pipe size	5 ft/sec	7.5 ft/sec	10 ft/sec	15 ft/sec
2 1/2"	75	112	149	224
3"	115	173	230	346
4"	198	298	397	595
6"	450	675	900	1351
8"	780	1169	1559	2339
10"	1229	1843	2458	3687



**OUTDOOR INSTALLATION**



**VERTICAL INSTALLATION**

## SPECIFICATIONS

The Reduced Pressure Detector Assembly shall be ASSE® Listed 1047, and supplied with full port OS & Y gate valves. The main body and access covers shall be epoxy coated ductile iron (ASTM A 536 Grade 4), the seat ring and check valve shall be NORYL™, the stem shall be stainless steel (ASTM A 276) and the seat disc elastomers shall be EPDM. The first and second checks shall be accessible for maintenance without removing the relief valve or the entire device from the line. If installed indoors, the installation shall be supplied with an air gap adapter. The Reduced Pressure Detector Assembly shall be a WILKINS Model 475DA or 475DAV.

Page 2 of 2