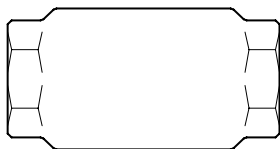


Model 40

In-Line Single Check Valve



FEATURES

Sizes: \square 1/2" \square 3/4" \square 1" \square 1 1/4" \square 1 1/2" \square 2"

Maximum working water pressure 200 PSI
Maximum working water temperature 150°F
End connections Threaded ANSI B1.20.1

APPLICATION

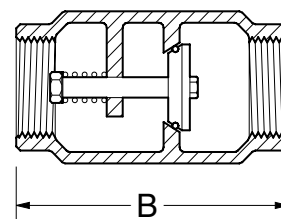
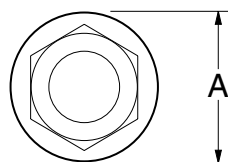
Designed for installation on potable domestic and commercial water systems such as well pump systems and applications requiring tight seating. For use as a positive backstop to eliminate reduced pressure principle backflow preventer discharge caused by pressure fluctuations or water hammer.

MATERIALS

Main valve body Cast Bronze ASTM B 584
Disc Cast Bronze ASTM B 584
Elastomers EPDM
Spring Stainless steel, 300 series

DIMENSIONS & WEIGHTS (do not include pkg.)

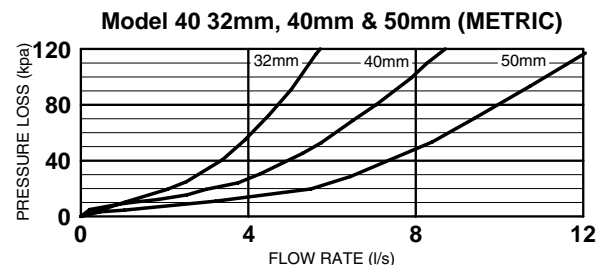
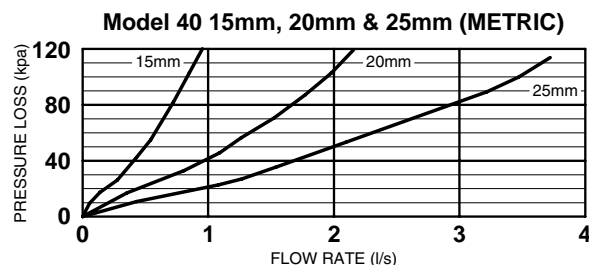
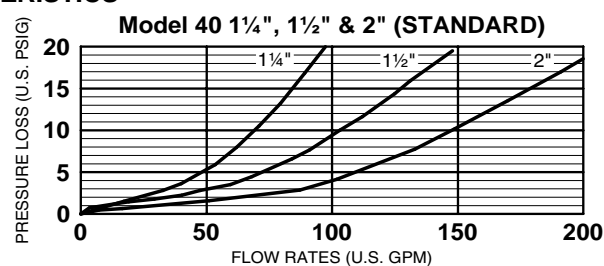
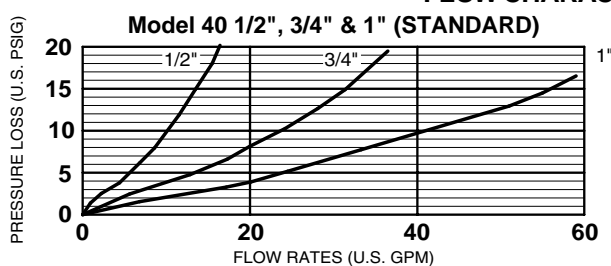
MODEL SIZE		DIMENSIONS (approximate)				WEIGHT	
		A		B			
in.	mm	in.	mm	in.	mm	lbs.	kg
1/2	15	1 3/8	35	2 3/4	70	1	0.5
3/4	20	1 1/2	38	3 1/4	83	1	0.5
1	25	1 7/8	48	3 3/8	86	1	0.5
1 1/4	32	1 1/4	57	3 5/8	92	2	0.9
1 1/2	40	2 1/2	64	4	102	2	0.9
2	50	3 1/8	79	5	127	4	1.8



TYPICAL INSTALLATIONS

Local codes shall govern installation requirements. To be installed in accordance with the manufacturer's instructions and the latest edition of the Uniform Plumbing Code. Not recommended for installation in sewage ejector piping or for reciprocating air compressor service.

FLOW CHARACTERISTICS



SPECIFICATIONS

The In-Line Single Check Valve shall be rated for 200 psi and 150°F. The body and poppet shall be bronze (ASTM B 584), the seat gasket shall be EPDM, and the spring shall be stainless steel (300 series). The In-Line Single Check Valve shall be a WILKINS Model 40.

DOCUMENT NO.	REV.
BF-40	11/00