

# MV-11 MUD VALVES

## (PLUG DRAIN VALVES)

- OPENING DIAMETERS, 4"-36"
- RUGGED CAST IRON CONSTRUCTION
- STAINLESS STEEL HARDWARE
- FLANGE TYPE FRAME

Waterman Mud Valves (Plug Drain Valves) are designed for settling basin lines, waterworks, sewage treatment plants, and similar industrial applications where sedimentaceous material must be flushed from the system.

### Seating Design Options:

- Bronze to bronze
- Neoprene to bronze

### Standard Features:

Seats: Bronze ASTM B-584 Alloy 844.  
Neoprene on Bronze, optional.  
Neoprene D-2000 Grade BC 520.  
Bodies (frame), Covers (discs), and Yokes:  
High Strength Cast Iron. ASTM A-126.  
Stems: Bronze. Stainless steel optional. Rising or non-rising.  
Lift Nuts: Bronze. ASTM B-584 Alloy 844.  
Flange Drilling: Mounts to 125 lb. ANSI Std.

### Optional Items:

Special Paint and Coatings  
Spigot Frames  
Drilling patterns other than 125 lb. ANSI  
Stem Extensions  
Adjustable Stem Extension Guides  
Indicating Pedestals  
Pedestal Lifts



## TYPICAL SPECIFICATIONS WATERMAN MODEL MV-11 MUD VALVE

Mud valves shall be of the heavy duty flange type with rising or non-rising stems as provided in the schedule or on the plans. Frame, cover, yoke and stem extension connection shall be cast iron. Stems shall be brass or stainless steel. Lift nuts shall be bronze. On non-rising stem models the stem is to be protected by a cast iron shroud with drain hole.

Seating surfaces are bronze and of flat configuration. Flange drilling on frame will be suitable for mounting to flange per ASA-B-16.1 (125 lbs. drilling).

Gate will be operated by a tee handle on a standard AWWA 2" valve nut or with stainless (mild steel) stem extension to the height required.

When shown, pedestal lifts, stem guides, and wall brackets will be furnished by the mud valve manufacturer to make a complete and operable unit.

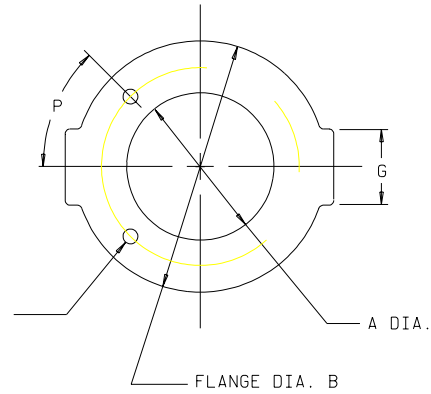
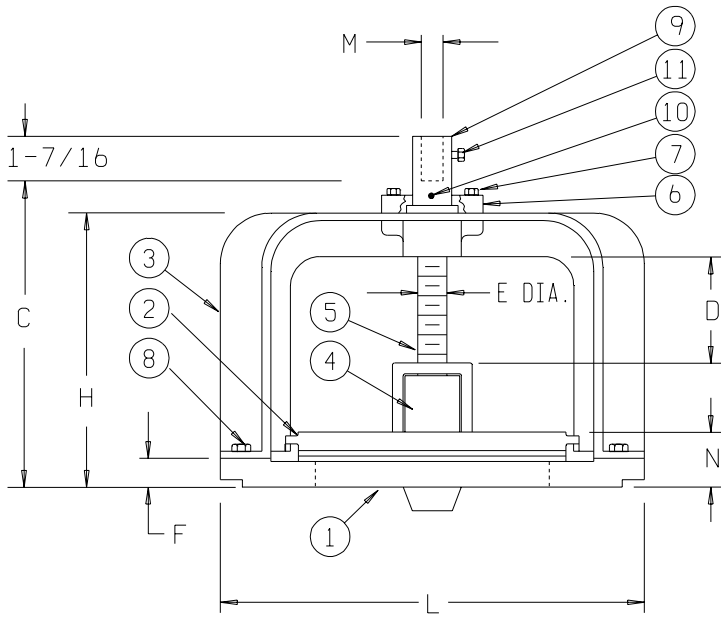
On rising stem valves, stem guides shall be provided such that the L/r ratio of the unsupported part of the stem shall not exceed 200.

Paint will be (manufacturer's standard) (as shown under painting specification).

Mud valves shall be Waterman Model MV-11 or equal.

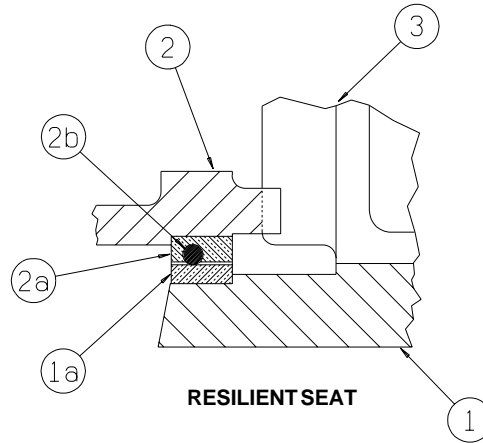
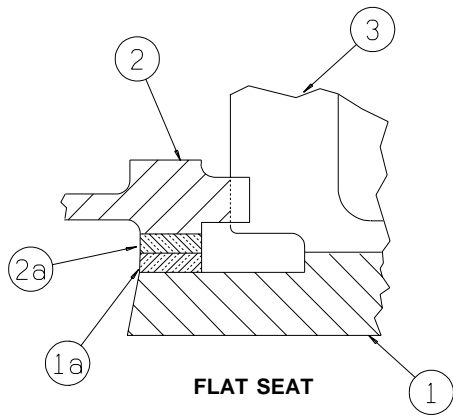
# 4" - 18" MV-11 MUD VALVES

PARTS LIST					
NO.	NAME	QTY.	NO.	NAME	QTY.
1	Frame	1	5	Stem	1
1a	Seat	1	6	Thrust Collar	1
2	Cover	1	7	Hex Hd. Bolt	1
2a	Seat	1	8	Hex Hd. Bolt	1
2b	Seal	1	9	Screw Head	1
3	Yoke	1	10	Pin	1
4	Thrust Nut	1	11	Set-Screw	1



1. MOUNTS TO STANDARD 125# FLANGE WITH REDUCED NUMBER OF BOLTS.

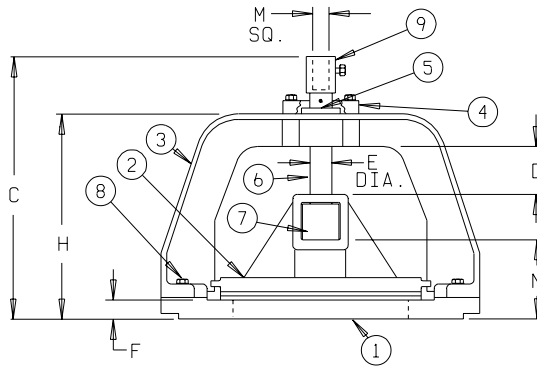
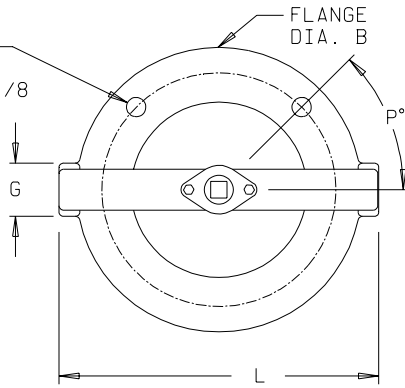
NO. OF BOLTS - J  
 HOLE DIA. - K  
 BOLT DIA. -K -1/8"  
 BOLT CIRCLE -BC



VALVE DIMENSIONS IN INCHES, SIZES 4" - 18"														
A	B	C	D	E	F	G	H	J	K	BC	L	M	N	P°
4	9	10 <sup>3/8</sup>	1 <sup>1/2</sup>	1	7/8	3	9 <sup>1/8</sup>	4	3/4	7 <sup>1/2</sup>	10 <sup>1/2</sup>	3/4	3 <sup>1/2</sup>	45
6	11	10	2 <sup>1/2</sup>	1	7/8	3	8 <sup>3/4</sup>	6	7/8	9 <sup>1/2</sup>	12 <sup>1/2</sup>	3/4	1 <sup>7/8</sup>	45
8	13 <sup>1/2</sup>	10 <sup>1/2</sup>	3	1	7/8	3	9 <sup>1/4</sup>	8	7/8	11 <sup>1/4</sup>	14 <sup>1/2</sup>	3/4	1 <sup>7/8</sup>	22 <sup>1/2</sup>
10	16	11 <sup>1/4</sup>	3 <sup>1/2</sup>	1	7/8	3	10	6	1	14 <sup>1/4</sup>	16 <sup>3/4</sup>	3/4	1 <sup>7/8</sup>	30
12	19	11 <sup>15/16</sup>	4	1	7/8	3	10 <sup>11/16</sup>	6	1	17	20	3/4	2	15
14	21	19 <sup>1/8</sup>	4 <sup>1/8</sup>	1 <sup>1/8</sup>	1 <sup>1/8</sup>	6 <sup>1/4</sup>	18 <sup>1/16</sup>	6	1 <sup>1/8</sup>	18 <sup>3/4</sup>	26 <sup>3/4</sup>	7/8	6 <sup>1/2</sup>	15
16	23 <sup>1/2</sup>	19 <sup>1/2</sup>	3 <sup>7/8</sup>	1 <sup>1/8</sup>	1 <sup>1/8</sup>	6 <sup>1/4</sup>	18 <sup>7/16</sup>	8	1 <sup>1/8</sup>	21 <sup>1/4</sup>	29 <sup>1/4</sup>	7/8	7 <sup>1/2</sup>	22 <sup>1/2</sup>
18	25	21	3 <sup>1/2</sup>	1 <sup>1/8</sup>	1 <sup>1/4</sup>	6 <sup>15/16</sup>	19 <sup>15/16</sup>	8	1 <sup>1/4</sup>	22 <sup>3/4</sup>	30	7/8	9 <sup>1/4</sup>	22 <sup>1/2</sup>

# 20" - 36" MV-11 MUD VALVES

NO OF BOLTS = J  
 HOLE DIA. = K  
 BOLT DIA. = K-1/8  
 BOLT CIRCLE = BC



PARTS LIST	
NO.	NAME
1	Frame (Cast Iron)
1a	Seat
2	Cover (Cast Iron)
2a	Seat
2b	Seal
3	Yoke (Cast Iron)
4	Thrust Collar (Cast Iron)
5	Lift Nut (Bronze)
6	Stem (Bronze)
7	Thrust Nut (Bronze)
8	Assy. Hdw. (300 Series Str. Stl.)
9	Coupling

- NOTES:
1. Mounts to standard 125# flange with reduced number of bolts.
  2. Non-rising stem valve shown; rising stem valve also available. All dimensions except "C" remain the same.
  3. Alternate material combinations and flange drilling patterns available upon request.

VALVE DIMENSIONS IN INCHES, SIZES 20"-36"														
A	B	C	D	E	F	G	H	J	K	BC	L	M	N	P°
20	27½	25¾	4⅞	1½	1¼	6⅝	21½	10	1¼	25	32½	1¼	9	18
24	32½	29⅞	7⅞	1½	1⅝	7¼	24½	10	1⅝	29½	37	1¼	10⅞	18
30	38¾	27⅞	10⅞	1½	1½	8	23¼	14	1⅝	36	46¾	1¼	3¾	6.43
36	46	37⅞	10	1½	1¾	10¾	32⅝	16	1⅝	42¾	57	1¼	12¾	5.63

