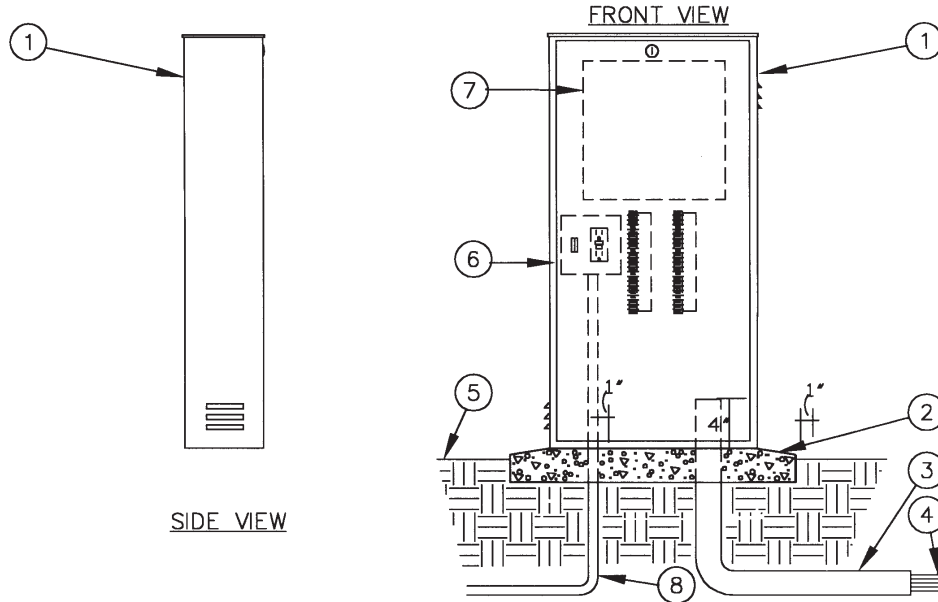


Model LD-16S

INSTALLATION DETAILS



- | | |
|--|---|
| 1. Controller cabinet | 5. Finish grade |
| 2. Poured concrete base – 6"
Min. thickness – extend 6" beyond outside dimensions of
enclosure with 1/2% slope for drainage. | 6. Controller sub-assembly (CSA) includes GFI and
terminal strips with placards. |
| 3. PVC long sweep ell – use one sweep ell per controller | 7. Automatic controller |
| 4. Direct burial control wires to control valves. | 8. 120-volt service in conduit |

SPECIFICATIONS

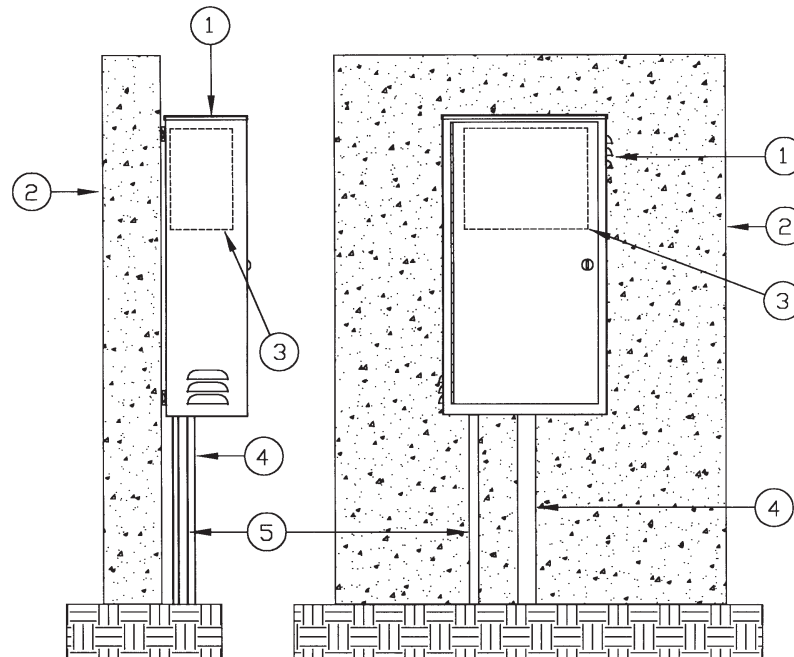
The cabinet shall be of a weather resistant nature manufactured entirely of 304 grade stainless steel. The main housing shall be louvered upper and lower body to allow for crossflow ventilation. Filter screens shall cover all louvers to deflect against water spray, insects and dust. A stainless steel

backboard shall be provided for the purpose of mounting electronic and various other types of equipment. The backboard shall be mounted on four stainless steel bolts that will allow for removal of the backboard. A stainless steel cam style lock shall be mounted in the door. The cabinet shall be equipped

with a teardrop shaped, hollow center, watertight, thermoplastic door seal. The above described product shall be a NEMA 3R Rainproof Enclosure as listed by Underwriter Laboratories, Inc.

Model LD-I6SW

INSTALLATION DETAILS



1. Controller cabinet
2. Wall
3. Automatic controller
4. 24-volt conduit
5. 120-volt conduit

Note:

Install controller cabinet to a wall as per manufacturer's installation instructions.

SPECIFICATIONS

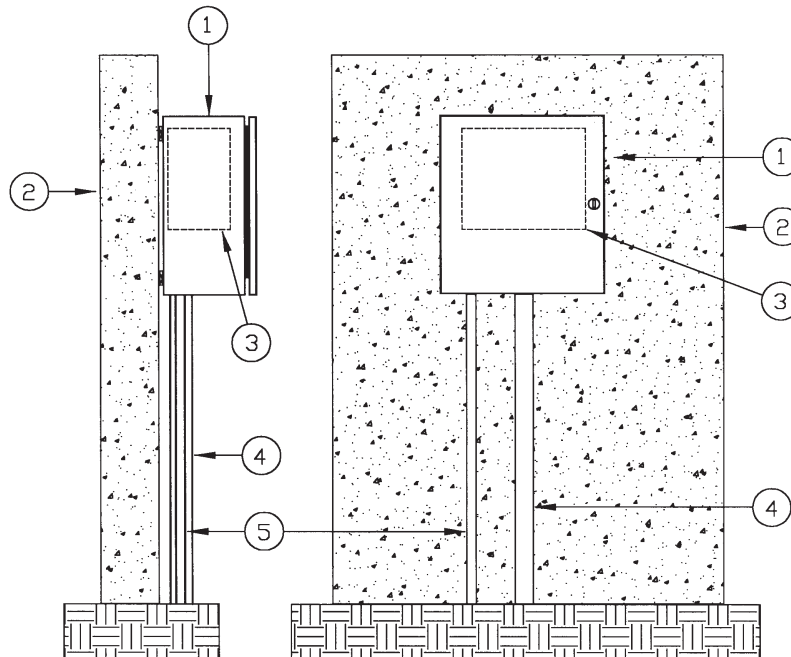
The cabinet shall be of a weather resistant nature manufactured entirely of 304 grade stainless steel. The main housing shall be louvered to deflect against water spray, insects and dust. A stainless steel backboard shall be provided for the purpose of mounting electronic and various other types of equipment. The backboard shall

be mounted on four stainless steel bolts that will allow for removal of the backboard. The cabinet door shall have a continuous stainless steel piano hinge on one side with a stainless steel cam style lock mounted in the door. The cabinet shall be equipped with a teardrop, hollow center, watertight, thermoplastic door seal. The bottom of

the cabinet shall be prepunched for electrical conduit. The above described product shall be a NEMA 3R Rainproof Enclosure as listed by Underwriter Laboratories, Inc.

Model LD-I8SW

INSTALLATION DETAILS



1. Controller cabinet
2. Wall
3. Automatic controller
4. 24-volt conduit
5. 120-volt conduit

Note:

Install controller cabinet to a wall as per manufacturer's installation instructions.

SPECIFICATIONS

The cabinet shall be of a weather resistant nature manufactured entirely of 304 grade stainless steel. A stainless steel backboard shall be provided for the purpose of mounting electronic and various types of equipment. The backboard shall be mounted on four stainless steel bolts that will allow for removal of the backboard.

The cabinet door shall have a continuous stainless steel piano hinge on one side with a stainless steel cam style lock mounted in the door. The cabinet shall be manufactured with a continuous drainage channel which mates with a teardrop shaped, hollow center, watertight, thermoplastic door seal. The bottom of the cabinet shall be prepunched

for electrical conduit. The above described product shall be a NEMA 3R Rainproof Enclosure as listed by Underwriter Laboratories, Inc.