



Our new QuickPad™ mounting pad with support base makes installation and mounting of Strong Box® enclosures easier than ever!

The mounting pad has our unique fastening system that allows for easy, secure attachment of the pad to the support base and the enclosure to the pad.

Together, the heavy-duty pad, support base and a Strong Box® enclosure form a complete unit that is secure, stable and vandal resistant.

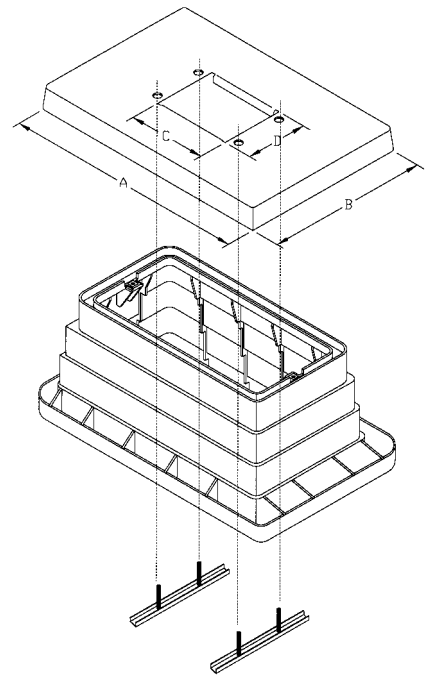
The buried support base provides added stability and security for the entire assembly.

All mounting hardware is stainless steel to prevent corrosion and rust.

Patent Pending.

### **Installation of QuickPad and Support Base for Controller Enclosures**

1. Dig a rectangular hole large enough to receive the support base with conduits underneath. The soil grade should be three inches below the top of the support base.
2. Place support base in hole and level to grade, leaving the top three inches of the support base exposed. Backfill and compact around outside of support base.
3. Line up pad with the support base in the ground. Place the fastening system through the center opening of the pad with the channel across the width of the support base, capturing the top flange. Slide the four bolts that are attached to the channel through the four holes in the pad. Place the enclosure over the four bolts and tighten from topside with a socket wrench.
4. Pea gravel should be placed inside support base to minimize rodent and moisture problems.



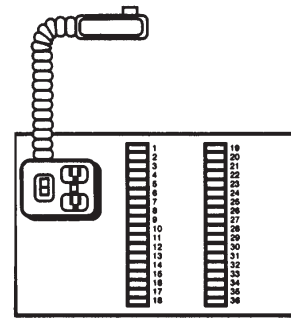
|        | DIMENSIONS |     |       |      |
|--------|------------|-----|-------|------|
|        | A          | B   | C     | D    |
| QP-16  | 30"        | 20" | 14"   | 7"   |
| QP-18  | 30"        | 20" | 14.5" | 6.5" |
| QP-22  | 30"        | 30" | 14"   | 10"  |
| QP-24  | 30"        | 20" | 14.5" | 6.5" |
| QP-18D | 30"        | 30" | 14"   | 10"  |
| QP-24D | 30"        | 30" | 14"   | 10"  |
| QP-M   | 30"        | 30" | 14"   | 10"  |

## 36 & 52 STATION CONTROLLER SUBASSEMBLY

This package includes 120 volt, 15 amp, ground fault protected duplex box with receptacle and locking switch: flexible conduit and conduit; and terminal strips with placards.

CSA 36 Stations

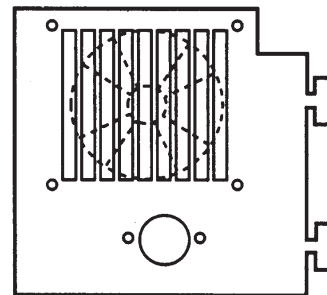
CSA-52 52 Stations



## THERMOSTATICALLY CONTROLLED FAN

The fan is easily installed and can be adjusted in the field to help maintain desired enclosure temperature

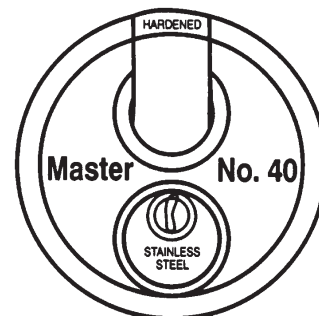
FAN



## HEAVY DUTY WEATHER RESISTANT LOCK

This rugged, stainless steel lock is ideal for use on all Strong Box® Enclosures.

HDL



## RAIN SWITCH ENCLOSURE

The Rain Switch Enclosure is designed to protect WCS and Mini-Click Rain Switches from Vandalism.

RGVRSS

