



# T&S BRASS AND BRONZE WORKS, INC.

2 Saddleback Cove / P.O. Box 1088  
Travelers Rest, SC 29690



REG. #A2601  
ISO #9001

Model No.  
**B-0670-01**

Item No.

Travelers Rest, SC: 800-476-4103 Simi Valley, CA: 800-423-0150 Fax: 864-834-3518 www.tsbrass.com

This Space for Architect/Engineer Approval

Job Name \_\_\_\_\_ Date \_\_\_\_\_

Model Specified \_\_\_\_\_ Quantity \_\_\_\_\_

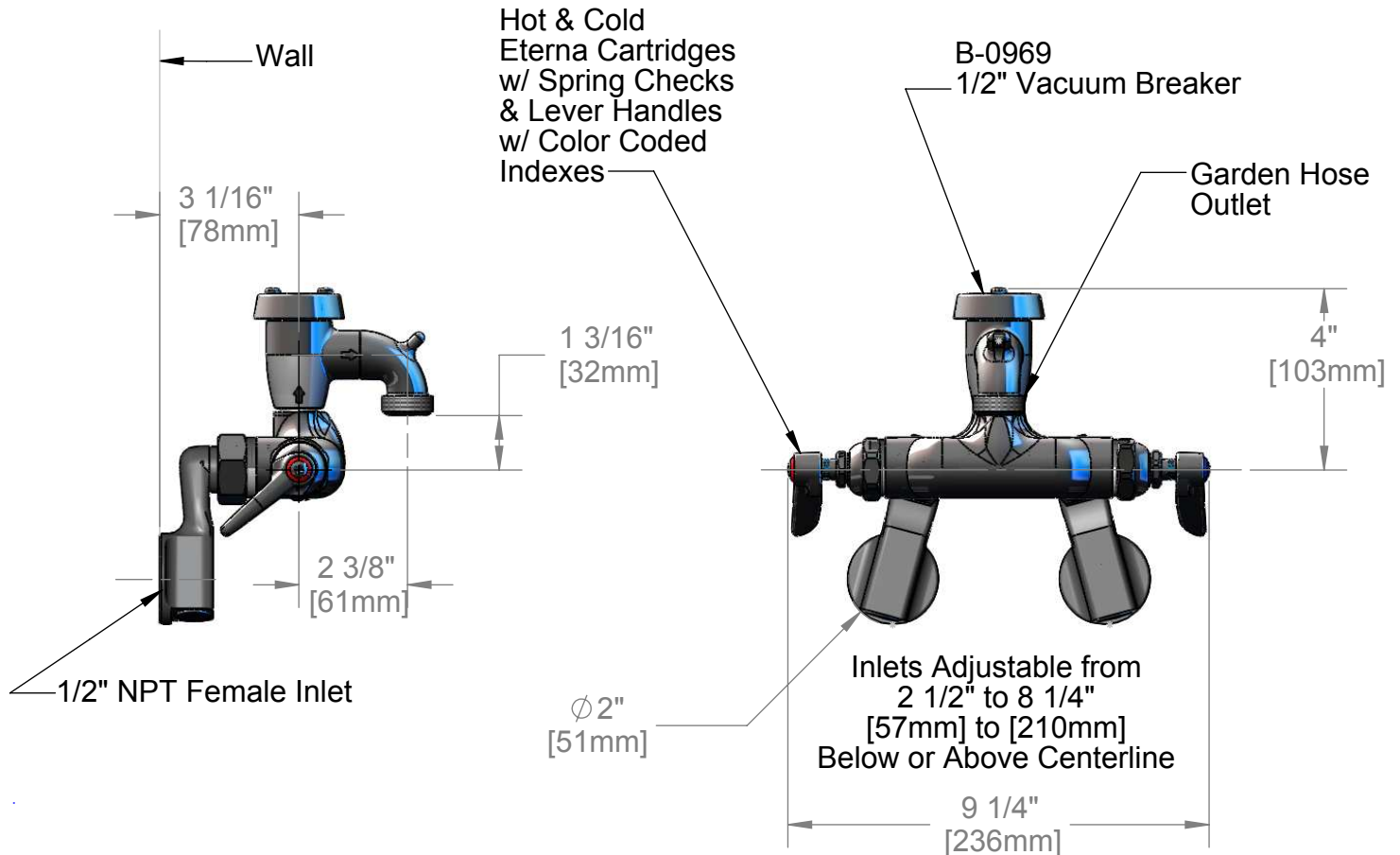
Customer/Wholesaler \_\_\_\_\_

Contractor \_\_\_\_\_

Architect/Engineer \_\_\_\_\_



**ADA Compliant**



Product Specifications:

**Wall Mount Polish Chrome Mixing Faucet, 1/2" NPT Adjustable Inlets, Pail Hook Spout & GG Flanges**

Drawn  
DHL

Checked  
GEF

Approved  
JHB

Scale:

1:4

Date:

5/16/08



**T&S BRASS AND BRONZE WORKS, INC.**

2 Saddleback Cove / P.O. Box 1088  
Travelers Rest, SC 29690



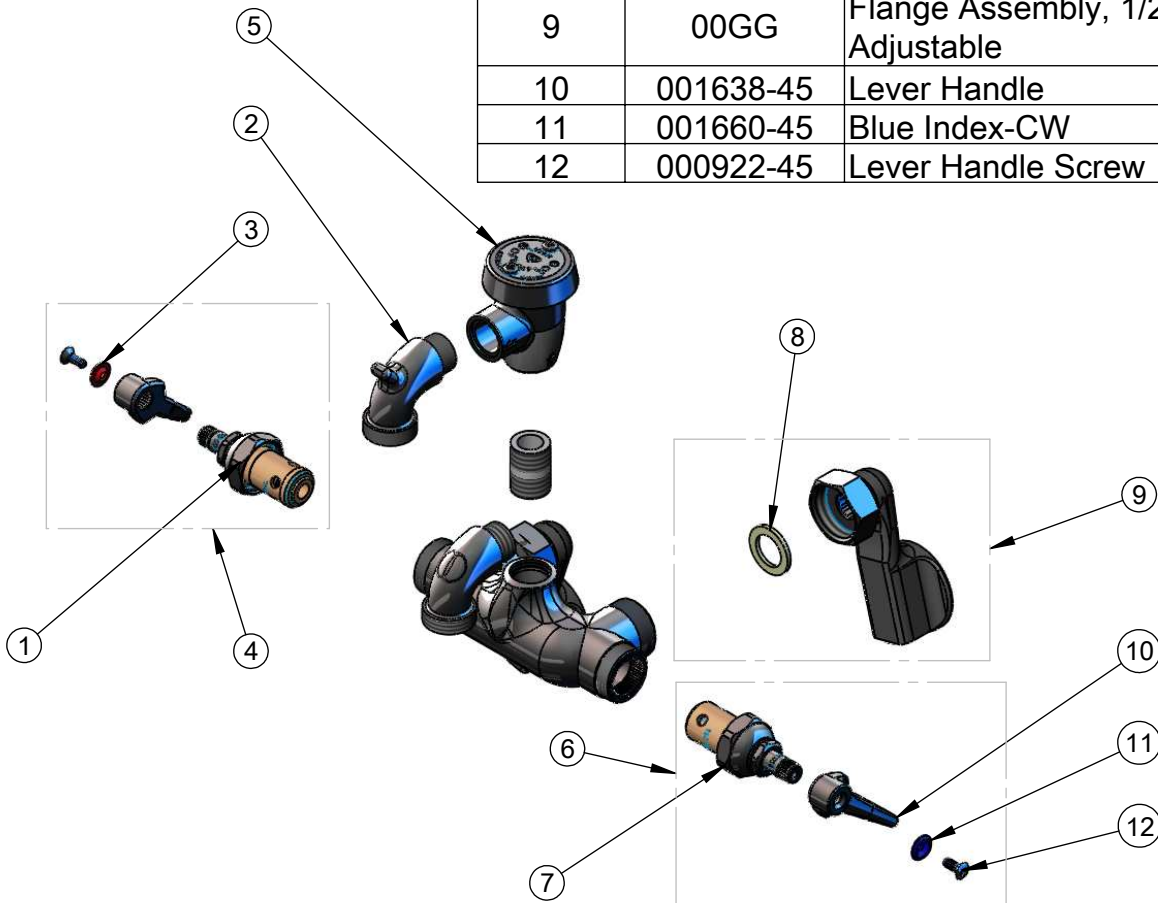
REG. #A2601  
ISO #9001

Model No.  
**B-0670-01**

Item No.

Travelers Rest, SC: 800-476-4103 Simi Valley, CA: 800-423-0150 Fax: 864-834-3518 www.tsbrass.com

ITEM NO.	SALES NO.	DESCRIPTION
1	012443-40	Hot Eterna Spindle Assembly w/ Spring Check
2	000270-40	Spout, Garden Hose Outlet
3	001661-45	Red Index-HW
4	002712-40	Hot Eterna Spindle Assembly w/ Spring Check, Handle, Index & Screw
5	B-0969	Vacuum Breaker, 1/2"
6	002711-40	Cold Eterna Spindle Assembly w/ Spring Check, Handle, Index & Screw
7	012442-40	Cold Eterna Spindle Assembly w/ Spring Check
8	001019-45	Coupling Nut Washer
9	00GG	Flange Assembly, 1/2" NPT, Adjustable
10	001638-45	Lever Handle
11	001660-45	Blue Index-CW
12	000922-45	Lever Handle Screw



Product Specifications:

Wall Mount Polish Chrome Mixing Faucet, 1/2" NPT  
Adjustable Inlets, Pail Hook Spout & GG Flanges

Drawn <b>DHL</b>	Checked <b>GEF</b>	Approved <b>JHB</b>
Scale: <b>1:4</b>		Date: <b>5/16/08</b>