

Limited One Year Warranty

T&S warrants to the original purchaser (other than for purposes of resale) that such product is free from defects in material and workmanship for a period of one (1) year from the date of purchase. During this one-year warranty period, if the product is found to be defective, T&S shall, at its options, repair and/or replace it. To obtain warranty service, products must be returned to...

*T&S Brass and Bronze Works, Inc.
Attn: Warranty Repair Department
2 Saddleback Cove
Travelers Rest, SC 29690*

Shipping, freight, insurance, and other transportation charges of the product to T&S and the return of repaired or replaced product to the purchaser are the responsibility of the purchaser. Repair and/or replacement shall be made within a reasonable time after receipt by T&S of the returned product. This warranty does not cover items which have received secondary finishing or have been altered or modified after purchase, or for defects caused by physical abuse to or misuse of the product, or shipment of the products.

Any express warranty not provided herein, and any remedy for Breach of Contract which might arise, is hereby excluded and disclaimed. Any implied warranties of merchantability or fitness for a particular purpose are limited to one year in duration. Under no circumstances shall T&S be liable for loss of use or any special consequential costs, expenses or damages.

Some states do not allow limitations on how long and implied warranty lasts or the exclusion or limitation of incidental or consequential damages, so the above limitations or exclusions may not apply to you. Specific rights under this warranty and other rights vary from state to state.

P/N: 098-012285-45
Date: 990317
Drawn: CW
Checked: MAB 4/6/99
Approved: MW 4/6/99

Installation and Maintenance Instructions



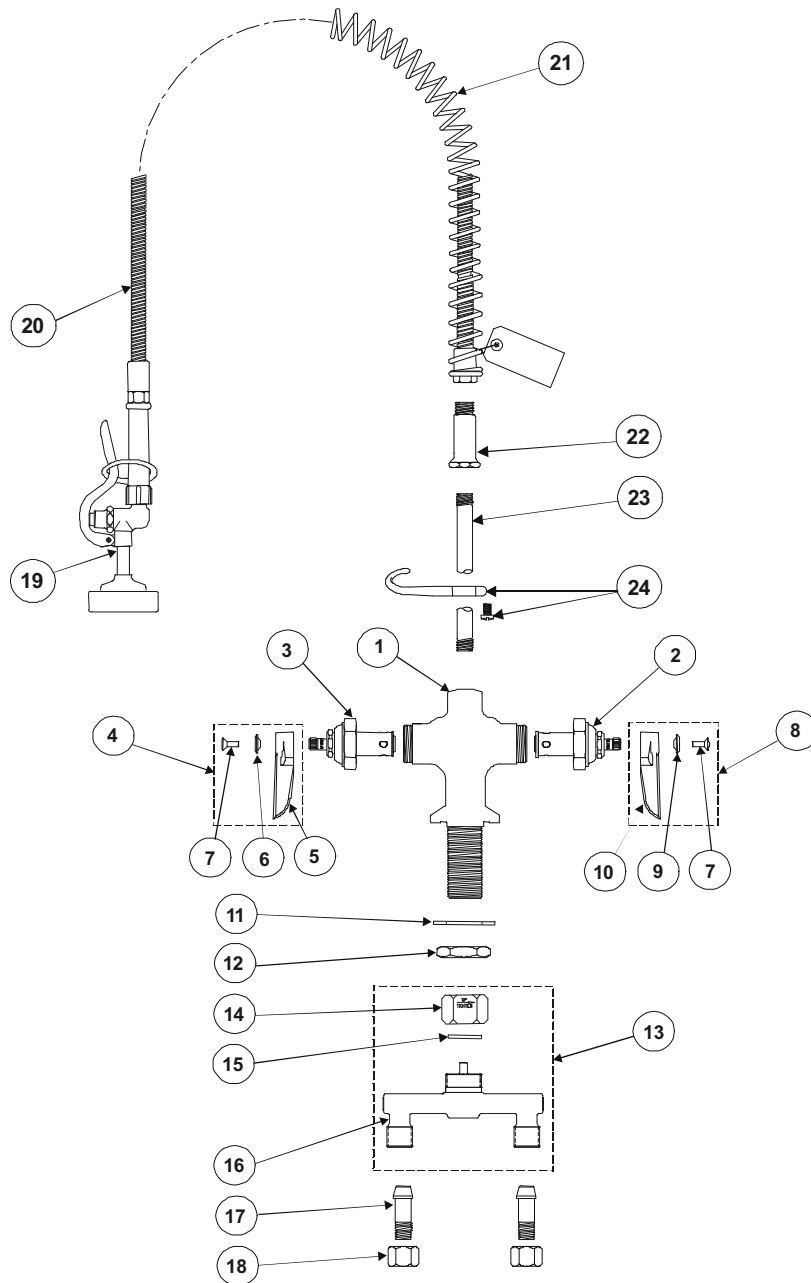
PRE-RINSE UNIT B-0113

Deutsch: Installations- und
Wartungsanleitungen

Español: la Instalación y las
Instrucciones de
Mantenimiento

Français: les Instructions
d'Installation et
d'Entretien

Exploded View



* Some items are listed for instructional purposes and may not be sold as separate parts.

Part Number Guide

Base Faucet Assembly -

002824-40

1	Body, Faucet	*
2	Asm, Spdl LH - Eterna w/ Spring Checks	002711-40
3	Asm, Spdl RH - Eterna w/ Spring Checks	002712-40
4	Asm, Lever Handle (LH)	006090-45
5	Lever Handle, Zinc - Hot	001637-45
6	Index Button, Red - Hot	001661-45
7	Screw, Lever Handle	000922-45
8	Asm, Lever Handle (RH)	006089-45
9	Lever Handle, Zinc - Cold	001636-45
10	Index Button, Blue - Cold	001660-45
11	Washer, Body	002290-45
12	Locknut, Shank	000965-45
13	Asm, Spreader	002898-40
14	Nut, Spreader Coupling	000736-20
15	Washer, Spreader	001041-45
16	Asm, Spreader Body & Pin	*
17	Tailpiece	001592-20
18	Nut, Nipple Coupling	000958-20

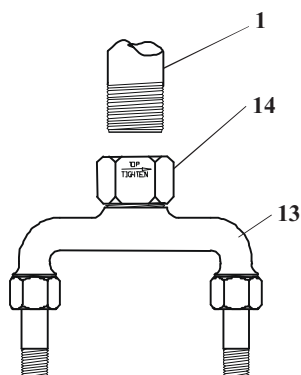
Pre-Rinse Unit

19	Assembly, Spray Valve	B-0107
20	Assembly, Flex S/S Hose	B-0044-H
21	Spring, Overhead	000888-45
22	Spring, Body	000821-40
23	Nipple, 3/8" x 24"	000372-40
24	Assembly, Finger Hook & Screw	002873-40

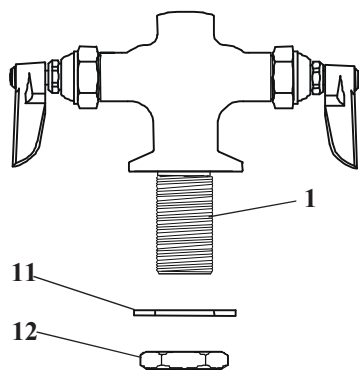
General Instructions

Faucet Installation:

1. Shut off water supply and drain lines. Drill a hole approximately 1-1/4" diameter in countertop where you are installing no. 1.
2. Loosen no. 14 with a 1-15/16" wrench and separate the two sections.

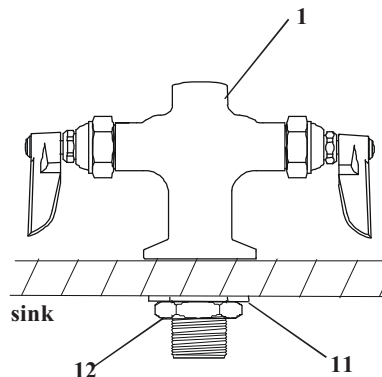


Note: Dont turn no. 14 any further after disassembly.



3. Remove no. 12 and no. 11 from no. 1.

4. Place no. 1 through hole in sink, align hot and cold sides parallel to sink line



5. Install no. 11 and no. 12 on no. 1, tighten no. 12. Screw no. 14 up on no. 1, tightening by hand, *making sure to align pins on no. 13 with corresponding holes at base of no. 1.*

Note: If no. 13 and no. 1 are joined correctly, the no. 13 will not move or twist if tried.

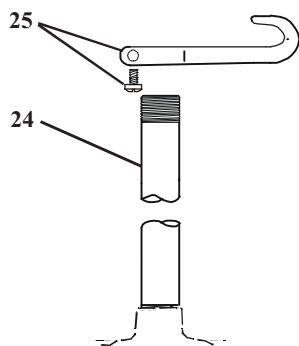
6. Tighten no. 14 with a 1-15/16" wrench.
7. Connect supply lines and check for leaks.

Caution: Turn off water supply at base faucet when not in use.

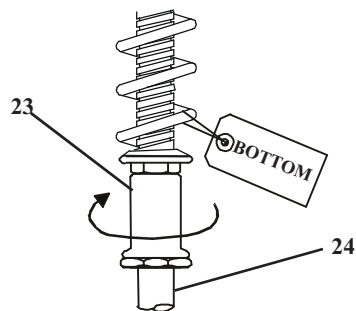
General Instructions

Pre-Rinse Installation:

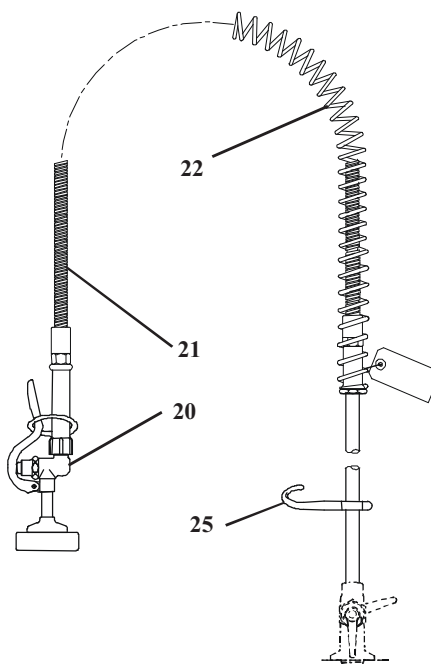
1. Shut off water supply and drain lines. Apply Teflon tape or pipe joint compound to threads on both ends of no. 24. Screw no. 24 into no. 1 and hand tighten.
2. Slide no. 25 down no. 24 (about halfway) and tighten temporarily.



3. Screw no. 23 down on no. 24 and hand tighten, then tighten no. 23 with a wrench, which will also tighten no. 24. Make sure to align no. 25 over center of sink, directly in front of no. 24 while tightening.



Note: If new no. 22 is being installed on no. 21, make sure it's installed in the upright position.



4. Adjust position of no. 25 so that no. 20 hangs loosely in it without straining no. 21 or no. 22.
5. Turn on water supply and check for leaks.

See back pages for similar unit installations.

Caution: Turn off water supply at base faucet when not in use.