



SCOT® S-60-H

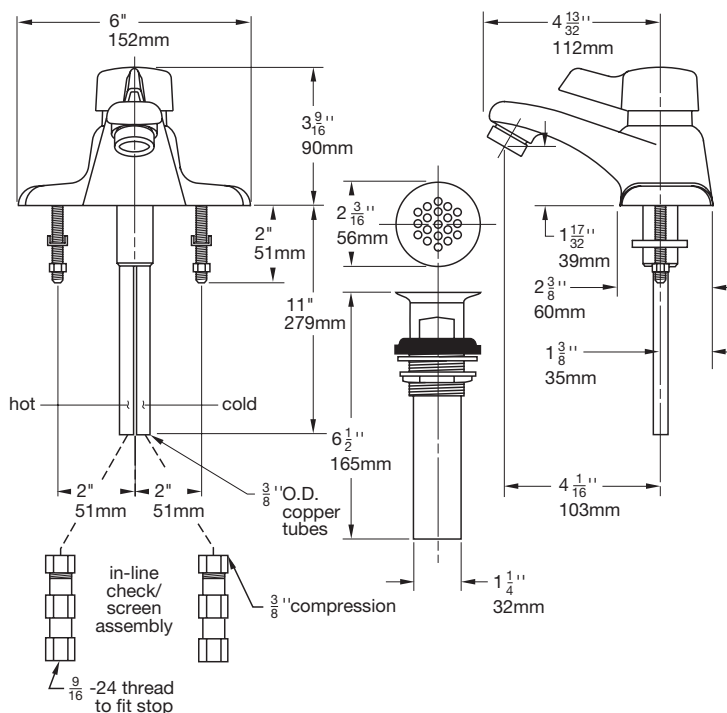
Slow-Closing Omni Temperature Lavatory Faucet

SCOT metering/temperature selection lavatory faucet with blade type handle for handicap accessible applications (replaces S-60 knob style handle). Cast brass 4" centerset with temperature limit stop to adjust outlet temperature and time limit stop to adjust flow time, includes (2) in-line check/screen assemblies. Spray outlet with 0.5 gpm flow rate. Vandal resistant.

- ☐ **S-60-H:** Faucet only
- ☐ **S-60-G-H:** With grid strainer drain assembly
- ☐ **S-60-P-H:** With pop-up drain assembly
- ☐ **S-60-1-H:** With lift rod only

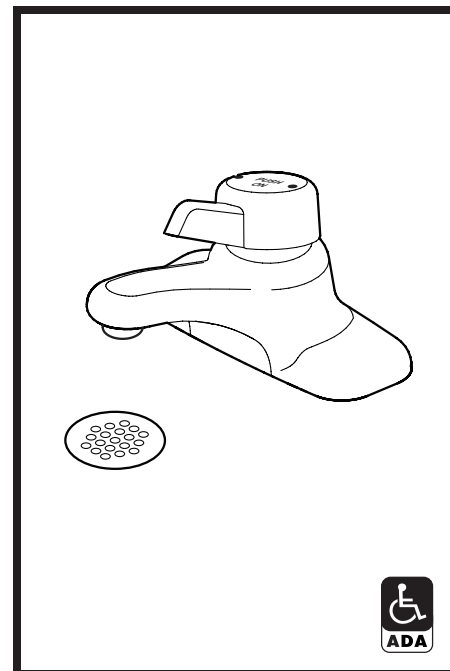
Modifications: Add suffix to model number

- ☐ **Suffix 1.25:** Vandal resistant aerator in place of 0.5 gpm spray outlet (1.25 GPM at 50 PSI)
- ☐ **Suffix NA:** Non-aerated laminar flow outlet
- ☐ **Suffix IPS:** 1/2" IPS connectors
- ☐ **Suffix STE:** Supply tube extensions, 8" with compression couplings
- ☐ **Suffix DP:** Adaptor plate for 8" center installations
- ☐ **Suffix OFG:** Offset grid strainer



Symmons Industries, Inc. ■ 31 Brooks Drive ■ Braintree, MA 02184
 (800) 796-6667, (781) 848-2250 ■ Fax (800) 961-9621, (781) 843-3849
 Website: www.symmons.com ■ Email: customerservice@symmons.com

© 2010 Symmons Industries, Inc. Printed in U.S.A. ■ 110110



**SYMMONS PRODUCTS MEET
 ANSI A112.18.1M, EPA '92
 AND ALL KNOWN FLOW RATE
 REQUIREMENTS.
 Metering Faucets
 0.25 gallons per cycle (1.0 L/cycle)**

Job/Location

Engineer

Contractor

For ADA compliance (Americans with Disabilities Act) consult ADAAG or your state regulations for proper product choice and mounting locations.

