

COMMANDER®

SC-5811



Service Sink Fittings

GENERAL SPECIFICATION

Polished chrome plated cast brass Commander service sink fitting with 1/4 turn ceramic cartridges covered by a 25-year warranty. Integral stops. Cast brass nozzle with 3/4" hose thread and pail hook. Brass vacuum breaker. Brass top brace assembly with wall flange and mounting screws. Distance from finished wall to nozzle outlet is 9". 8" centers with adjustable threaded brass wall flanges provide +/- 1/4" adjustments. 1/2" NPTF inlets. Meets A112.18.1/CSA B125.1 and ASSE-1001 standards.

❑ SC-5811

Vandal-resistant four-arm handles with color-coded indexes.

❑ SC-5812 ♿

Vandal-resistant lever handles with color-coded indexes.

❑ SC-5814 ♿

Vandal-resistant 4" wrist blade handles with color-coded indexes.

❑ SC-5816 ♿

Vandal-resistant 6" wrist blade handles with color-coded indexes.

❑ SC-5818 ♿

Vandal-resistant wing handles with color-coded indexes.

OPTIONS

SUFFIX DESCRIPTION

❑ CK	Check valves in swivel assembly
❑ EC	RCP eccentric couplings adjust for installations with 4" to 12" centers
❑ LVB	Less vacuum breaker (plain end spout)
❑ MI	Metal index for handles
❑ RCP	Rough chrome plated finish
❑ SEF-9200	Safety eyewash attachment
❑ 5H	5' vinyl hose with wall hook

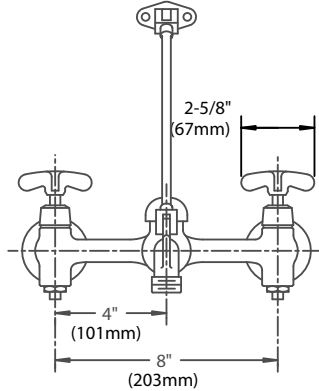


This space for Architect/Engineer approval.

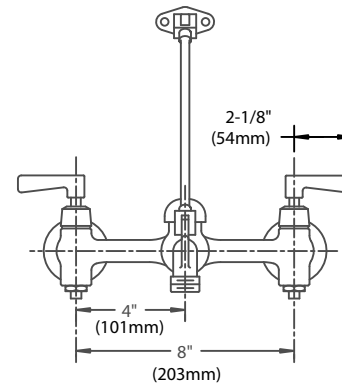


Rough-Ins

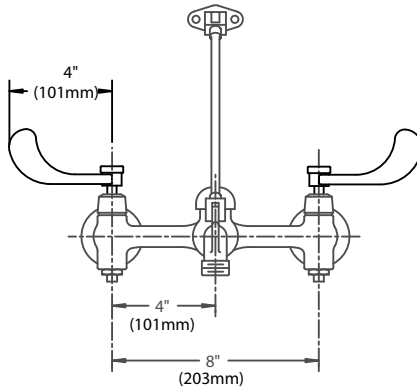
SC-5811



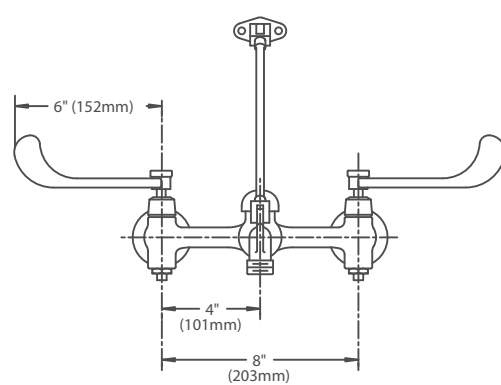
SC-5812



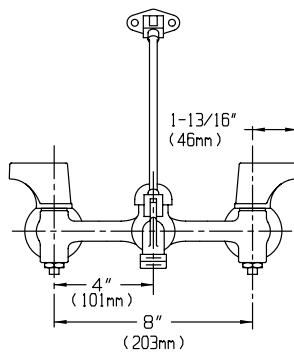
SC-5814



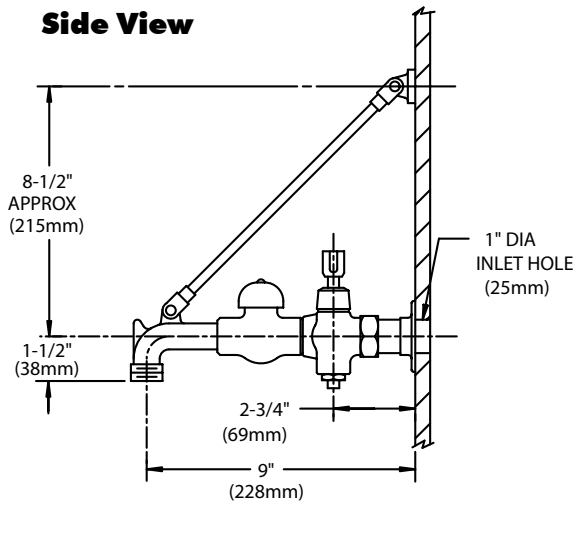
SC-5816



SC-5818



Side View



NOTE: All dimensions are in inches (millimeters) unless otherwise specified and are subject to change without notice. Unless otherwise specified, all inlets are 1/2" NPTF.