

ADJUSTABLE CLEANOUT

851 Series

SPECIFICATION:

Sioux Chief 851 Series adjustable cleanout shall be used where necessary in drainage systems. Cleanout shall connect to DWV system by means of a cast iron Push-joint adapter which includes a slotted cleanout plug. Cleanout plug shall be polypropylene to increase acid resistance, and include a center threaded brass insert to accept cover screw. Cover shall connect to adapter by means of three set screws positioned around lower circumference of cover on 120° centers, which allow vertical adjustment of cover.

MATERIALS:

ADAPTER BODY: Cast iron

PUSH-JOINT GASKET: Neoprene

COVER: Cast nickel, cast tenz alloy, cast iron, nickel/tenz alloy laminated cast iron

SET SCREWS: Square head, 1/4-20

COVER SCREW: Stainless steel, Phillips head, 1/4-20

PLUG: Polypropylene, slotted with threaded brass insert

Item Number
Submitted:

851-_____



851-64N
shown

COVER LOAD RATING:

NICKEL: 2,400 lbs.

TENZ ALLOY: 1,500 lbs.

CAST IRON: 10,000 lbs.

LAMINATED CAST IRON: 10,000+ lbs. (Special Duty)

DIMENSIONS:

Top Diameter A:	Cast Metal Cover	Cast Iron Cover	Laminated Cast Iron Cover
3" cleanout:	4 7/8"	5"	6"
4" cleanout:	6"	6"	7 1/8"
6" cleanout:	8 3/8"	7 1/8"	7 1/8"

Overall Cleanout Height B:

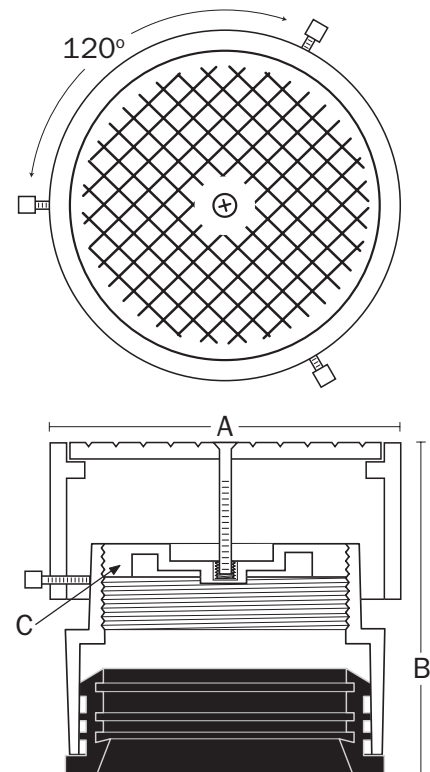
3" cleanout:	3 1/4" - 4 1/2"	4" - 5 3/4"	4 1/4" - 6"
4" cleanout:	3 1/4" - 4 1/2"	3 3/4" - 5 3/4"	4" - 6"
6" cleanout:	3 7/8" - 5"	4 1/2" - 6"	4 3/4" - 6 1/4"

Cleanout Plug C:

3" cleanout: Polypropylene - 3" MIP thread - slotted

4" cleanout: Polypropylene - 4" MIP thread - slotted

6" cleanout: Polypropylene - 6" MIP thread - slotted



Create Item Number Below

851-ABC

e.g. 851-63iNV = 3" connection cast iron push-joint cleanout; satin finish, nickel laminated cast iron cover with vandal-proof screw

A Connection Size

- ☐ **63** = 3" Push-Joint
- ☐ **64** = 4" Push-Joint
- ☐ **66** = 6" Push-Joint

B Optional Cover

- ☐ **N** = Satin finish Cast Nickel
- ☐ **T** = Tenz Alloy Cover
- ☐ **I** = Cast Iron Cover
- ☐ **iN** = Satin Nickel Lam. Cast Iron
- ☐ **IT** = Tenz Alloy Lam. Cast Iron

C Options Factory installed

- ☐ **S** = Stamping (SAN, ST, CO)
- ☐ **V**¹ = Vandal-proof cover screw

¹ Not available on cast iron covers