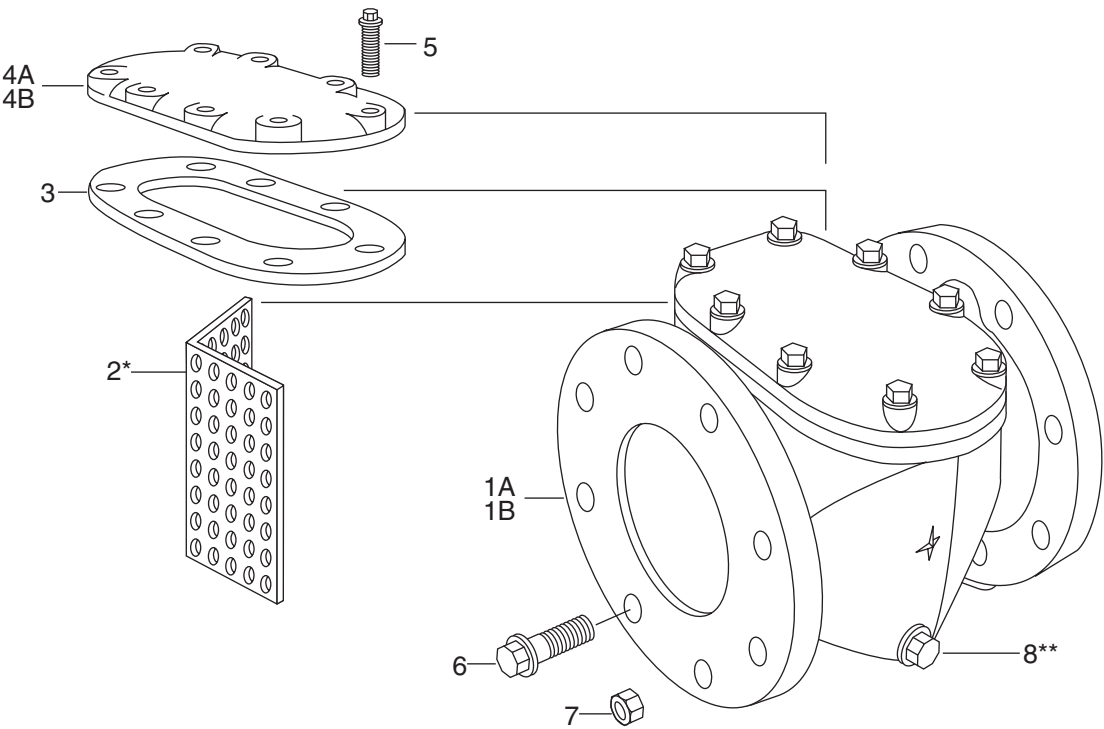


**Water Meter Strainers**

Sizes 1-1/2", 2", 3", 4", 6", 8", 10" and 16 AWWA Type



ILL. No.	Name of Part
1A	Body—Iron
1B	Body—Bronze
2*	Screen
3	Main Flange Gasket
4A	Cover—Iron
4B	Cover—Bronze
5	Cap Screw — Main Cover
6	Flange Bolt
7	Flange Nut
8**	Drain Plug—Bronze

\* Screen Configurations vary by size:  
1-1/2" - 10"    – V-Shaped Screen (Perforated Stainless Steel)  
16"            – Two-Piece Screen (Cast-Bronze)  
1-1/2" - 10"    – Flanges are Threaded  
16"            – Drilled Flanges-Require Nuts & Bolts

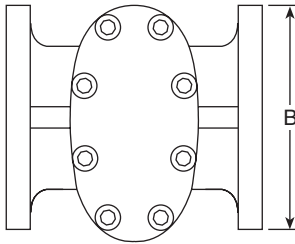
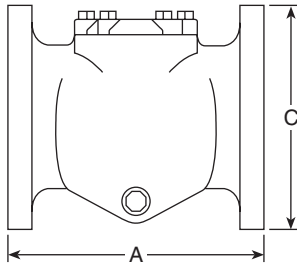
\*\* Optional Drain Plugs (2) available on request. Sizes:  
1-1/2" - 3" - 1/2" – Plugs  
4" - 3/4"        – Plugs  
6" - 1"         – Plugs  
16" - 2"        – Plugs

Water Meter Strainers

Sizes 1-1/2", 2", 3", 4", 6", 8", 10" and 16 AWWA Type

Dimensions and Net Weights:

Size	A Length	B Width	C Height	Weight
2" Bronze	7" (178mm)	6-5/16" (159mm)	4-3/4" (121mm)	12.2 lb. 5.5 kg.
3" Bronze	7" (178mm)	7-7/16" (190mm)	7-9/16" (192mm)	27 lb. 13 kg.
4" Bronze	9" (230mm)	9-1/2" (241mm)	9" (230mm)	50 lb. 23 kg.
6" Bronze	9" (230mm)	13-1/2" (343mm)	11-1/4" (286mm)	84 lb. 38 kg.
8" Iron	10" (245mm)	17" (432mm)	13-1/2" (343mm)	118 lb. 54 kg.
10" Iron	15" (381mm)	17-1/2" (445mm)	19" (482mm)	260 lb. 118 kg.
16" Iron	18" (457mm)	29" (737mm)	25" (635mm)	775 lb. 353 kg.



Pressure Drop

1-1/2"	2"	3"	4"	6"	8"	10"	16"
.7 psi at 120 gpm	.9 psi at 160 gpm	.9 psi at 350 gpm	2.5 psi at 1000 gpm	2.7 psi at 2000 gpm	2.5 psi at 3500 gpm	2.1 psi at 5500 gpm	1.8 psi at 10,000 gpm

Bolt Holes

2	2	4	8	8	8	12	16
---	---	---	---	---	---	----	----

Flanges: 2" size, two-bolt oval, AWWA 125 pound class  
3" through 16"; round, U.S. ANSI B. 16.1 class 125

Warranty:

Sensus warrants its products only against defects in materials and workmanship. Sensus' liability and customer's exclusive remedy under this warranty or any warranty extends for a period of one (1) year from the date of Sensus' shipment and is expressly limited to repayment of the purchase price, repair or replacement, at Sensus' option, during said period, upon proof satisfactory to Sensus and upon customer's returning and prepaying all charges on such products to factory or warehouse designated by Sensus.

THIS WARRANTY IS MADE EXPRESSLY IN LIEU OF ALL OTHER WARRANTIES; EXPRESS, IMPLIED, OR STATUTORY, WITH RESPECT TO QUALITY, MERCHANTABILITY, OR FITNESS FOR A PARTICULAR PURPOSE.

AUTHORIZED SENSUS DISTRIBUTOR



P.O. Box 487 • 450 N. Gallatin Avenue  
Uniontown, PA 15401  
1-800-METER-IT • 1-800-638-3748  
Fax: Direct to Factory  
Local: 724-439-7729 • Toll Free: 1-800-888-2403  
www.sensus.com (select "North America Water")  
Email: h2oinfo@sensus.com