



Transmate

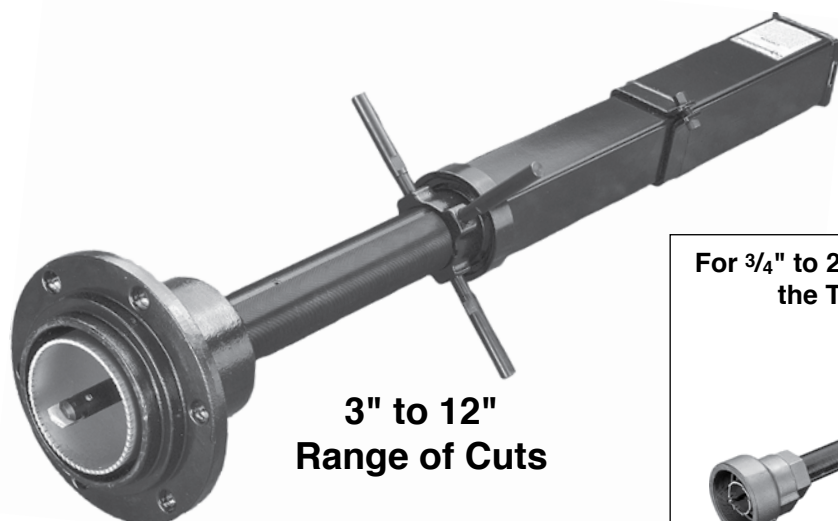
1-800-426-9341



TapMate™

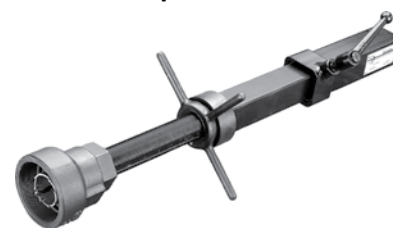
Main Drilling Machine

Affordable, lightweight and effective pipe drilling with the TapMate



**3" to 12"
Range of Cuts**

For 3/4" to 2" range of cuts, see
the TapMate Too™



Page TM-10

Low Cost

The TapMate was designed especially for the water industry as a low cost, fully functional wet or dry drilling machine. Its simple design gives you a reasonably priced drilling machine that is cost effective to own and maintain. For applications other than water, please contact Transmate.

Lightweight

Because of its lightweight and sturdy construction, the TapMate is easy to move, place, and position at the job site. Your cuts are quicker because there is much less time needed for set-up and breakdown during the tap.

Easy to Use

TapMate's manual feed has no hidden gears or mechanisms to fail or misrepresent the position of the shaft. A direct reading scale is always in full view.

Cuts All Types of Pipe

The TapMate cuts PVC, A/C, Ductile Iron, Cast Iron, and Steel Pipe, all with the same accessories.

Easy to Maintain

The TapMate works hard and demands little from your maintenance staff. Cleaning, care of the threaded lead tube, and a little grease are all the TapMate needs to give you years of service. Replacement cutters and pilots are reasonably priced. Cutters can also be resharpened and retooled. The TapMate not only costs less to buy, but also costs less to own.

Hydraulic, Electric or Air Power

Transmate offers an electric power arm, an air drive and a hydraulic power system for the TapMate. You have the flexibility to choose the best power source (or sources) for your needs.

**Transmate****1-800-426-9341**

TapMate™

3" to 12" Range of Cuts

Material Specifications

- Weighs 65 lbs., allowing easy handling and operation
- Easy-to-use controls, including feed control and always visible position indicator
- Positive manual feed
- Taps any pipe commonly used in underground water mains
- Simple construction allows in-house maintenance and repair
- Over 27 inches of travel



To Order:

1. Order Base Machine
2. Order Cutters per size
3. Order Adapters per size and outlet type
4. Order Extra Spade Bit (350-03-08) if doing A/C taps
5. If doing 10" and 12" taps, you must order Pilot Drill Extension (350-14)
6. Order Power Unit

ITEM NUMBER	DESCRIPTION	LIST PRICE	ITEM NUMBER	DESCRIPTION	LIST PRICE
350-00	TapMate™ Base Machine & Storage Box For lateral tapping	\$8,727.54	Shell Cutters		
	Included with Tapmate Machine:		Actual Size		
350-21-A	1" Shaft Nose (used for 3" - 8" cuts)	included	For Ductile, Cast Iron, Steel, A/C & PVC	350-01-1024	3" Carbide Cutter 2 1/2" 421.71
350-03-08	1" Spade Bit	"		350-01-1032	4" Carbide Cutter 3 1/2" 548.30
350-04	PVC Pilot (required for any plastic pipe taps)	"		350-01-1048	6" Carbide Cutter 5 1/2" 812.69
350-61	Storage Box	"		350-01-1064	8" Carbide Cutter 7 1/2" 1,074.93
353-10-1	Tapping Compound	"		350-01-1080 ¹	10" Carbide Cutter 9 1/2" 2,400.25
				350-01-1096 ¹	12" Carbide Cutter 11 1/2" 2,839.02
360-00	QuikValve™ Base Machine For lateral tapping, QuikValve™ & InsertaValve™ installations	\$9,872.69	For HDPE & PVC	350-01-2024 ²	3" Cutter for HDPE & PVC Pipe 2 1/2" 420.61
	For QuikValve see QV-2 & InsertaValve see QV-7			350-01-2032 ²	4" Cutter for HDPE & PVC Pipe 3 1/2" 547.02
				350-01-2048 ²	6" Cutter for HDPE & PVC Pipe 5 1/2" 810.72
				350-01-2064 ²	8" Cutter for HDPE & PVC Pipe 7 1/2" 1,070.26
				350-01-2080 ^{1,2}	10" Cutter for HDPE & PVC Pipe 9 1/2" 2,394.27
				350-01-2096 ^{1,2}	12" Cutter for HDPE & PVC Pipe 11 1/2" 2,833.09
			For Steel	350-01-5024	3" Cutter for Steel 2 1/2" 421.63
				350-01-5032	4" Cutter for Steel 3 1/2" 548.30
				350-01-5048	6" Cutter for Steel 5 1/2" 812.69
				350-01-5064	8" Cutter for Steel 7 1/2" 1,074.93
				350-01-5080 ¹	10" Cutter for Steel 9 1/2" 2,400.25
				350-01-5096 ¹	12" Cutter for Steel 11 1/2" 2,840.28
Adapter Bells			Accessories		
350-05-1024	3" MJ Adapter Bell	393.33	350-03-08	1" Spade Bit	79.44
350-05-1032	4" MJ Adapter Bell	447.94	350-21-A	Shaft Nose (includes 1" Spade Bit)	297.93
350-05-1048	6" MJ Adapter Bell	515.69	350-14 ¹	Pilot Drill Extension (required for 10" and 12" taps)	118.83
350-05-1064	8" MJ Adapter Bell	607.37	350-04	PVC Pilot	160.50
350-05-1080	10" MJ Adapter Bell	794.54	350-04H	HDPE Pilot	301.67
350-05-1096	12" MJ Adapter Bell	894.25	350-05-571	Adapter Bell O-Ring	13.56
350-05-2024	3" 125# Flange Adapter Bell	377.24	350-05-512	Adapter Set Screw	5.48
350-05-2032	4" 125# Flange Adapter Bell	447.94			
350-05-2048	6" 125# Flange Adapter Bell	528.71			
350-05-2064	8" 125# Flange Adapter Bell	607.85			
350-05-2080	10" 125# Flange Adapter Bell	1,092.28			
350-05-2096	12" 125# Flange Adapter Bell	1,191.74			

NOTE: Shell Cutters can be resharpened, and retooled

Adapter Bells for both metric and push-on style pipe connections are also available.
Special Adapter Bells can be made upon request

Please call Romac for recommendations on ordering and using HDPE Holesaws

¹ 10" and 12" Cutters require the Pilot Drill Extension

² HDPE Pilot needed (350-04H) if tapping HDPE pipe only



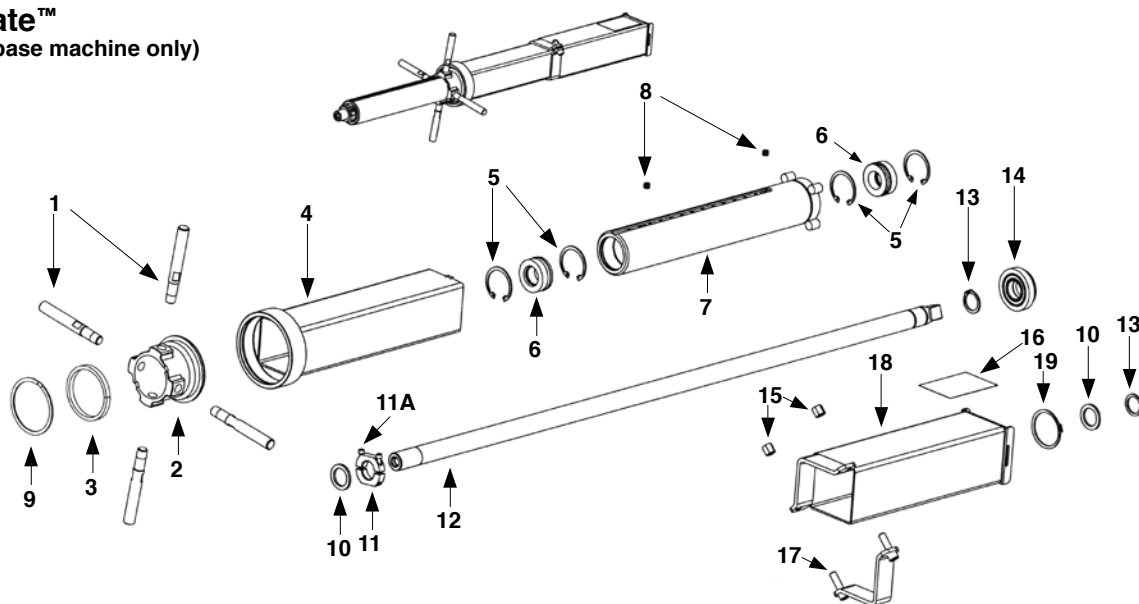
Transmate

1-800-426-9341

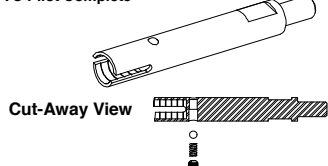


TapMate™ Parts List

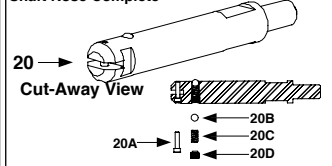
TapMate™ 350-00 (base machine only)



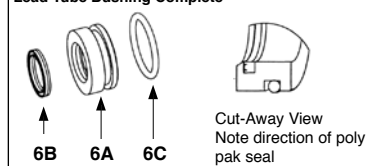
350-04
PVC Pilot Complete



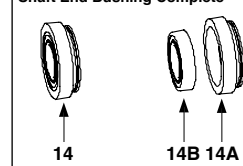
350-21-A
Shaft Nose Complete



350-22-2A
Lead Tube Bushing Complete



350-22-1
Shaft End Bushing Complete



REF NO.	DESCRIPTION	ITEM NO.	LIST PRICE
1	Handle for Lead Nut (4 required)	350-29	\$76.30 ea.
2	Lead Nut	350-24	490.38
3	Lead Nut Nylatron Washer	350-24-531	33.98
4	Thrust Tube	350-32	708.29
5	Lead Tube Snap Ring (4 required)	350-23-54	9.83 ea.
6	Lead Tube Bushing Complete (2 required)	350-22-2A	206.27
6A	Lead Tube Bushing Only (2 required)	350-22-2	167.66
6B	Shaft Poly Pak Seal (1 per bushing, 2 per machine)	350-57-2	20.95
6C	Lead Tube Bushing O-Ring (1 per bushing, 2 per machine)	350-57-1-62	10.90
7	Lead Tube	350-23	1,165.93
8	Lead Tube Socket Plug (2 required)	350-23-512	5.48 ea.
9	Lead Nut Snap Ring	350-24-54	21.79
10	Jam Nut Thrust Washer (2 required)	350-20-531	16.85 ea.
11	Jam Nut (for cutters)	350-52	45.83
11A	Jam Nut Set Screw	350-52-1	0.97
12	Shaft Main	350-20	762.45
13	Shaft End Snap Ring (2 required)	350-20-54	9.83 ea.
14	Shaft End Bushing Complete	350-22-1	213.59
14A	Shaft End Bushing	350-22	118.53
14B	Shaft End Bearing	350-20-56	98.08
15	Brake Nut (2 required)	350-31-52	6.54 ea.
16	Serial Number Plate	350-58	11.95
17	Brake Half, Threaded	350-31	91.52
18	Brake Tube Complete	350-30	708.29
19	Shaft End Bushing Snap Ring	350-22-54	9.83
20	Shaft Nose Complete	350-21-A	297.93
20A	Spade Bit Lock Screw	350-03-531	5.48
20B	Coupon Retainer Ball (5/16)	350-21-561	5.48
20C	Coupon Retainer Spring	350-21-55	5.84
20D	Coupon Retainer Set Screw	350-21-512	5.48