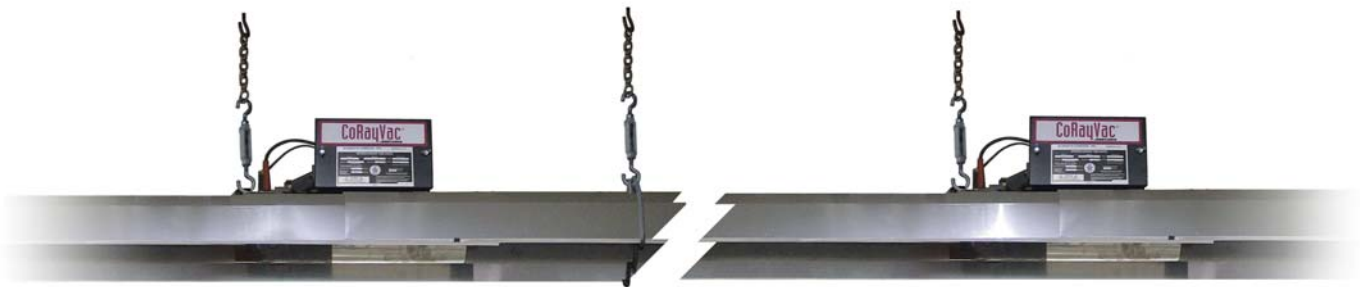


# CoRayVac®

## Low-Intensity Continuous Infrared Heating System

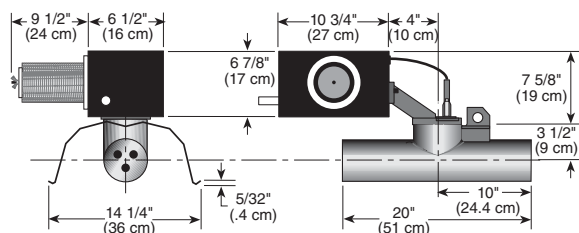


- Virtually unlimited design options from custom engineered system
- Fuel savings and enhanced user comfort provided by burners in-series design
- Excellent efficiency and ideal combustion from zero regulator incorporated in state of the art burner design
- Maximizes usable space with low clearances to combustibles
- Extra safety feature with zero regulator design
- Reduced building penetrations as a result of multiple burners per pump
- Environmentally friendly - meets stringent emission standards



*Quality in Any Language™*





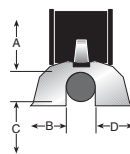
		CORAYVAC®							
Model		B-2	B-4	B-6	B-8	B-9	B-10	B-12A	B-12
Burners in a Branch*	max.	6	4	4	4	2	4	4	4
Radiant Tube Length Between Burners	[ft]								
	min.	10	12.5	20	20	25	30	35	35
	Recommended	15	20	25	30	30	40	50	50
	max.	20	25	35	45	50	60	70	70
Input (Btu/h) x (1000)		20	40	60	80	90	100	110	120
Inlet Pressure	[in wc] NG min.	4.5							
	LPG Propane min.	10.5							
	NG & LPG Propane max	14							
Gas Connection	NPT	1/2"							
Fuel		NG or LPG Propane; B2 and B12A - NG Only; B12 - LPG Only							
Electrical Supply**		120 V, 60 Hz, 0.3 A (Connection Cord with Three-Prong Molded Plug)							
Burner Head		Cast Iron (Optional - Nickel Plated Cast Iron)							
Combustion Chamber		16 Gauge Hot Rolled, Heat-Treated Aluminized, Porcelain Coated (Interior and Exterior) Steel or Cast Iron							
Heat Exchanger Tubing	Radiant	4" dia, 16 Gauge Hot Rolled, Aluminized, Heat-Treated Aluminized, Porcelain Coated (Interior and Exterior) Steel Tubing or 4" Schedule 40 Pipe							
	Tailpipe	4" or 6" dia, 16 Gauge Aluminized, Heat-Treated Aluminized, Porcelain Coated (Interior and Exterior) Steel Tubing							
Exhaust Flue	dia	4" or 6"							
Reflector and End Caps		.024 Aluminum [Optional - .024 Stainless Steel Type 304]							
Control System		Fully Automatic, Three-Try, 100% Shut-Off, Direct Spark Electronic Ignition Control							
Approved As		Indoor (Vented)							
Certification		ANSI Z83.20/CSA 2.34, 2.17							
Burner Weight	[lb]	19							
Warranty		Three-Year Limited (Refer to Installation, Operation and Service Manual for Details)							

\*Pump type, system layout and environmental conditions may reduce maximum allowable burners in a branch. Refer to the CORAYVAC® Design Manual for complete design requirements or contact your ROBERTS GORDON® North American independent distributor for further assistance.

\*\*Refer to Pump Spec Sheet for complete system electrical requirements.

### Clearances to Combustibles \*\*\*[in]

Model		B-2	B-4	B-6	B-8	B-9	B-10	B-12A	B-12
Horizontal	A	4	4	4	4	4	4	4	4
	B	20	20	20	20	36	36	36	36
	C	48	48	48	48	60	60	60	60
	D	20	20	20	20	36	36	36	36



\*\*\*Clearances B, C and D can be reduced by 50% for locations 25 ft (7 m) or more downstream of the burner. For other mounting options and associated clearances, complete installation, operation and service criteria, please see the current issue of the Installation, Operation and Service Manual.

### Installation Code and Annual Inspections:

All installations and service of ROBERTS GORDON® products must be performed by a contractor qualified in the installation and service of products sold and supplied by Roberts-Gordon and conform to all requirements set forth in the ROBERTS GORDON® manuals and all applicable governmental authorities pertaining to the installation, service and operation of the equipment. To help facilitate optimum performance and safety, Roberts-Gordon recommends that a qualified contractor annually inspect your ROBERTS GORDON® products and perform service where necessary, using only ROBERTS GORDON® replacement parts.

**Further Information:** Applications, engineering and detailed guidance on systems design, installation and product performance is available through ROBERTS GORDON® representatives. Please contact us for any further information you may require, including the Installation, Operation and Service Manual.

### Roberts-Gordon, LLC

1250 William Street  
P.O. Box 44  
Buffalo, NY 14240-0044 USA  
Telephone: 716.852.4400  
Fax: 716.852.0854  
Toll Free: 800.828.7450  
[www.rg-inc.com](http://www.rg-inc.com)

### European Office:

Roberts Gordon Europe Limited  
Telephone: +44(0) 1902 494425  
Fax: +44(0) 1902 403200