

# "PRO-EXTREME"™

A.D.A. COMPLIANT UNDER-LAV COVERS



ADA Compliant for Americans with Disabilities Act



# PLUMBEREX

SPECIALTY PRODUCTS INC.

Engineering Smart Solutions

SUBMITTAL SHEET

PROJECT	
DWG #	
ITEM #	

## SUBMITTAL SPEC SHEET

**Insulate per ADA 4.19.4, (ADA/ABA 606.5 rev.) and ICC/ANSI A117.1, all drainage piping including all hot and cold water supplies under lavatories. Insulate with brand: Pro-Extreme™ Manufacturer: Plumberex, Inc.**

Molded PVC Covers containing anti-microbial/anti-fungal and UV inhibitors with Self-extinguishing flammability characteristics. Fastening system to consist of tamper-resistant, smooth, non-abrasive snap-locks. **P-Trap Cover:** One-Piece cover designed with full rotation option. Cover must have weep holes at the lowest point for proper leak drainage and for ventilation.

**Valve and Supply Covers:** One-Piece covers designed with removable cap for access to water shut-off. Removable Cap can be reassembled and secured; no loose access parts are allowed to ensure long-term tamper-resistance. Cover must have weep holes at the lowest point for proper leak drainage and for ventilation. **Wheel Chair Offset Strainer Cover:** One-Piece cover designed with full rotation option. Cover also uses Velcro fasteners for easy installation.

## CODE COMPLIANCE

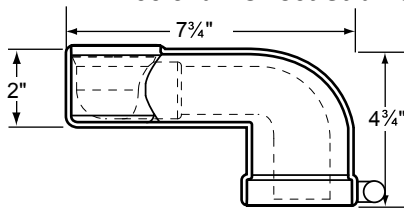
- ADA 4.19.4/ABA 606.5 (rev.)
- ICC/ANSI A117.1
- Canadian Barrier Free Act

"This product does not meet the 25 Flame/450 Smoke index material test standard ASTM E-84, and may not satisfy City County, or State Code enforcement bodies. Check with your Authority Having Jurisdiction (AHJ)."

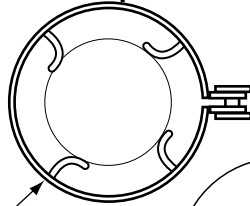
## PART NUMBER BY PRODUCT

- |                          |   |
|--------------------------|---|
| <input type="checkbox"/> | <b>MODEL # X4111</b><br>1 P-Trap Cover  |
| <input type="checkbox"/> | <b>MODEL # X4112</b><br>1 Valve & Supply Cover  |
| <input type="checkbox"/> | <b>MODEL # X4114</b><br>1 Wheelchair Offset Strainer Cover  |
| <input type="checkbox"/> | <b>MODEL # X4222</b><br>1 P-Trap Cover,<br>1 Valve & Supply Cover Cover                                 |
| <input type="checkbox"/> | <b>MODEL # X4333</b><br>1 P-Trap Cover,<br>2 Valve & Supply Covers                                      |
| <input type="checkbox"/> | <b>MODEL # X4444</b><br>1 P-Trap Cover<br>1 Wheelchair Offset Strainer Cover<br>2 Valve & Supply Covers |

## Wheelchair Offset Strainer Cover

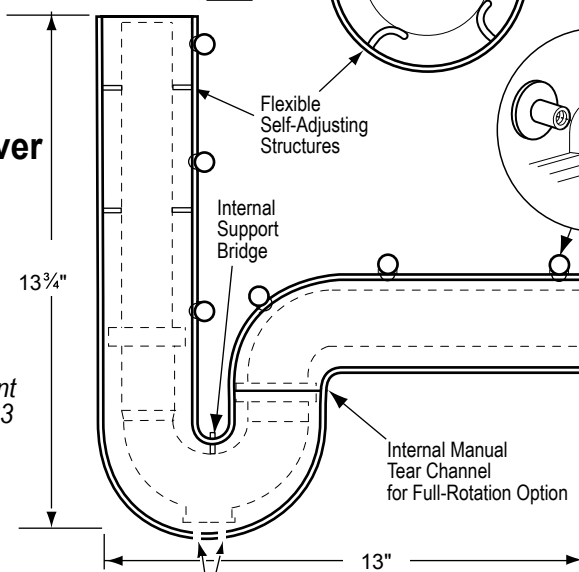


## P-Trap Cover Inside Top View



Snap-Lock  
Fastener  
Detail

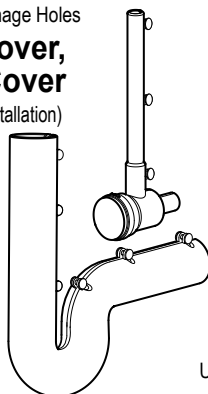
## P-Trap Cover



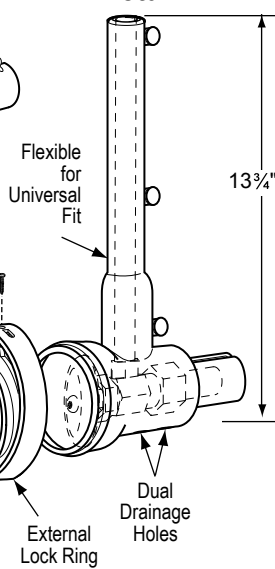
U.S. Patent  
#7,100,633  
other U.S.  
patents  
applied for

Dual Drainage Holes

## P-Trap Cover, Valve and Supply Cover (One-Piece Installation)

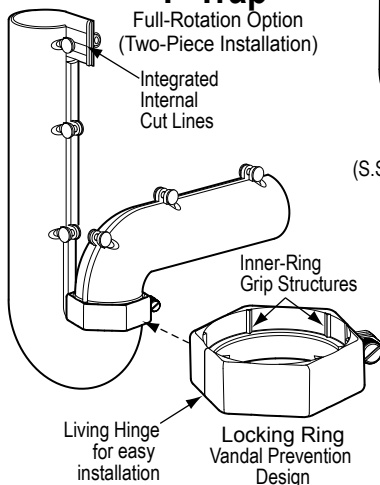


## Valve and Supply Cover Detail



## P-Trap

Full-Rotation Option  
(Two-Piece Installation)



**PLUMBEREX**  
SPECIALTY PRODUCTS INC.

P.O. Box 1684 Palm Springs, CA 92263 (760) 343-7363 1-800-475-8629 FAX (760)343-7366  
Plumberex Specialty Products, Inc. Reserves the right to make changes or improvements at any time without notice.

© 2006 Plumberex Specialty Products, Inc.