



ARAD - WATER METERS DIVISION
PRECISION - WATER METER

WT

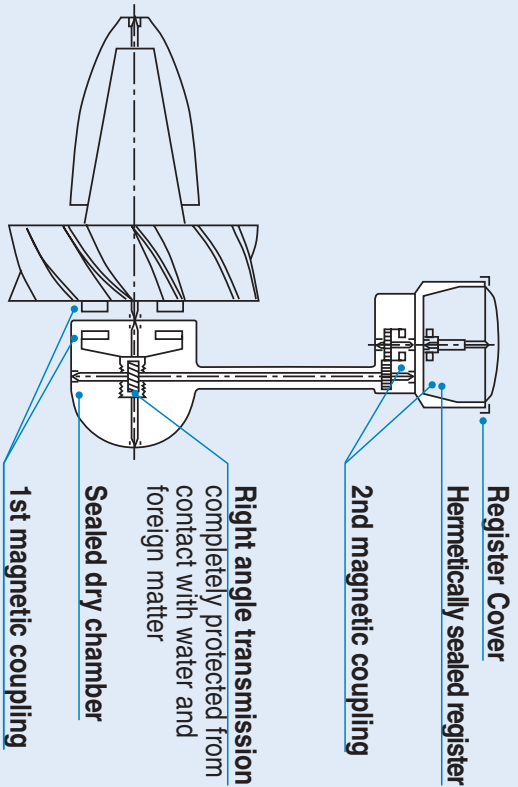


Description:

A family of compact size wolman water meters with field interchangeable light weight measuring units.

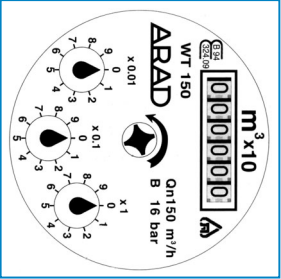
Features:

- High accuracy, low loss of head and high immunity against abrasive media in the water due to double magnetic coupling. This unique construction leaves only one moving element, the impeller, in contact with water. The next moving components, including the worm & worm wheel, are kept in a sealed, dry compartment and have no contact with any abrasive media present in the water.



- Tungsten carbide impeller shaft tips & bearings for negligible wear in Heavy Duty use are standard on 10" & 12" and optional on all other sizes, code: HD.

- A wide selection of sealed, magnetically coupled registers, with two dial configurations (3 pointers or single central pointer) and different electrical output versions, single or multiple, are available.



- Registers are: Stainless steel/glass encapsulated and guaranteed against fogging.



Application:

Standards:

Available Sizes:

Water supply networks, agricultural application and industrial use.
ISO 4064, AWWA, EEC
2" - 12" (50 mm - 300 mm).

TECHNICAL SPECIFICATION:

Maximum working pressure:

Maximum working temperature:

Connection to the pipeline:

Body:

Standard - 230psi. Optional - 360psi.
140°F
Flanges according to ISO, BS 10, AWWA or others.
Cast iron, polyester coated.

INSTALLATION REQUIREMENTS:

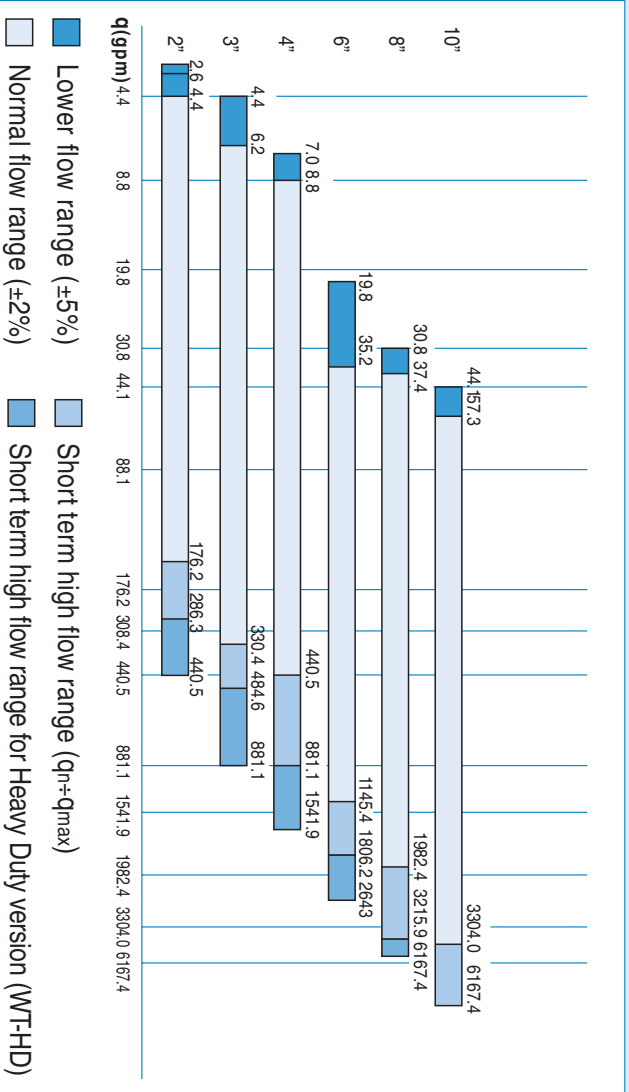
- The water meter may be installed in any position. For non-horizontal positions the flow shall be upwards.
- The meter shall be full of water while operating.
- Prior to installation of a meter, the pipeline shall be thoroughly flushed.
- Straight pipe section of the same diameter D as the meter, having lengths of 10D and 5D shall be installed upstream and downstream of the meter respectively.

PERFORMANCE DATA - WT

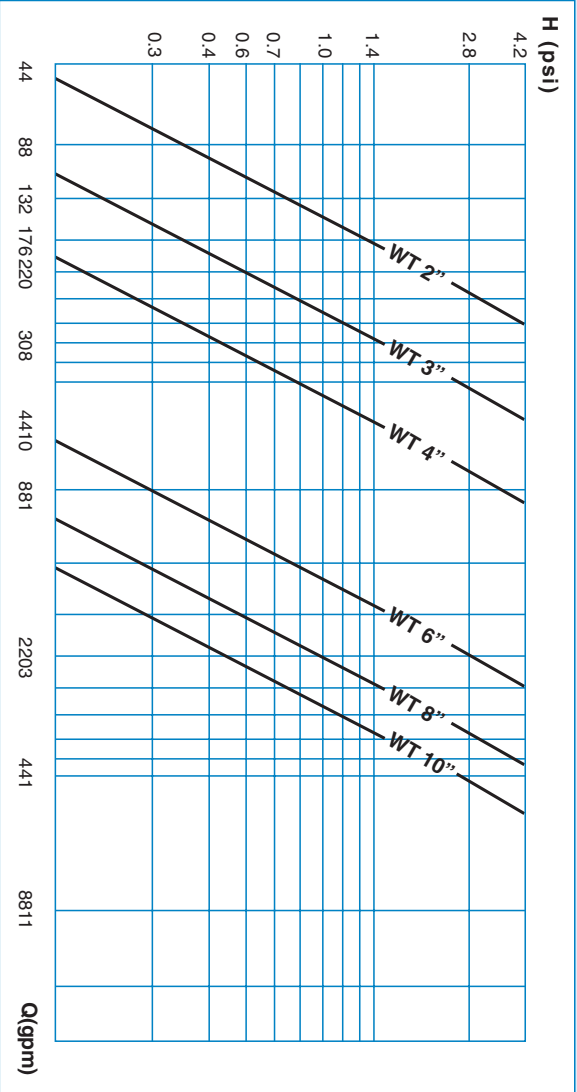
Nominal size		mm					
		50	80	100	150	200	250
	inch	2"	3"	4"	6"	8"	10"
Permissible peak load for short periods	Qmax gpm	285	485	880	1800	3200	6160
Permanent flow rate	Qp gpm	176	330	440	1145	1980	3300
Lowest flow rate measured within ±2%	Qt gpm	4.4	6.2	8.8	35	37.5	57
Lowest flow rate measured within ±5%	Qmin gpm	2.6	4.4	7	19.8	31	44
Register capacity (millions)	usg	10 ²	10 ²	10 ³	10 ³	10 ⁴	10 ⁴



FLOW LIMITS



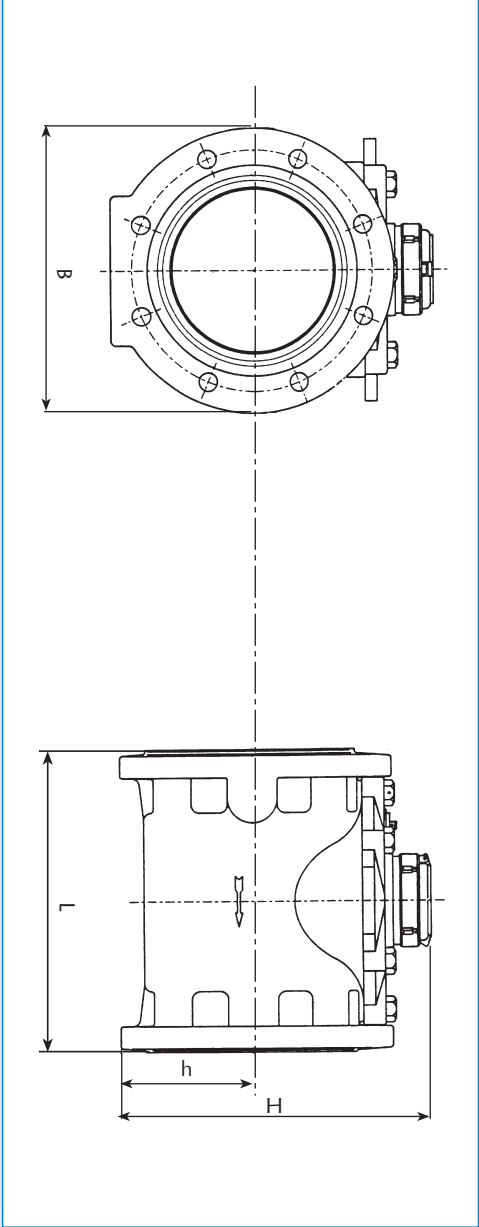
HEAD LOSS CURVES





Dimensions

Nominal size	mm	50	80	100	150	200	250	250
	inch	2"	3"	4"	6"	8"	10"	12"
B	inch	6 1/2"	7 3/4"	7 3/4"	11 1/4"	13 1/4"	16	18 1/4"
L	inch	7 3/4"	9	9 3/4"	11 3/4"	13 3/4"	17 3/4"	19 3/4"
H	inch	8 1/2"	9 1/4"	9 3/4"	12 1/4"	13 1/4"	17 1/4"	18 1/4"
h	inch	2 3/4"	3 1/2"	4 1/4"	5	6 1/4"	10 1/4"	13"
Weight	lbs	26	34	42	77	103	165	209



TD-195 8.03 WT Netafim



Netafim USA 5470 E. Home Ave. Fresno, CA 93727 Tel: 559.453.6800 Fax: 559.443.9815