



# ARAD - WATER METERS DIVISION

## MULTI-JET - WATER METER

M



### Description:

Water meters using the multi-jet principle are the best cost/performance, long life, flow measurement instruments. Wide clearances in the measuring chamber and negligible area of contact between static and moving parts are the main reasons for the high reliability of this design even in hard water.

### Features:

- Only one moving part - the impeller - in contact with the water for minimum wear and utmost reliability.
- Magnetically driven sealed registers. Stainless steel/glass encapsulated option is unconditionally guaranteed against fogging.
- Wide selection of dial configurations (3 pointers; central pointer), units of measurements and different options of electrical output.

### Application:

For domestic, agriculture and industrial use.

### Standards:

ISO 4064, AWWA, C 708, SI 63

### Available Sizes:

Model M - 1/2" - 2" (15mm - 50mm).  
Model MF - 2" (50mm) flanged.

### TECHNICAL SPECIFICATION:

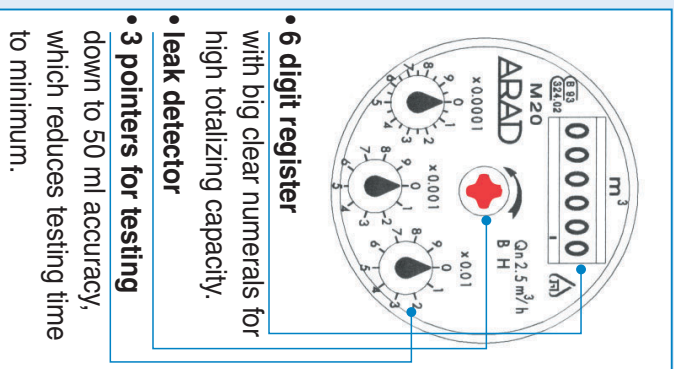
**Maximum working pressure:** 140 psi

**Maximum working temperature:** 122°F

**Body:** Corrosion proof copper alloy.

### INSTALLATION REQUIREMENTS:

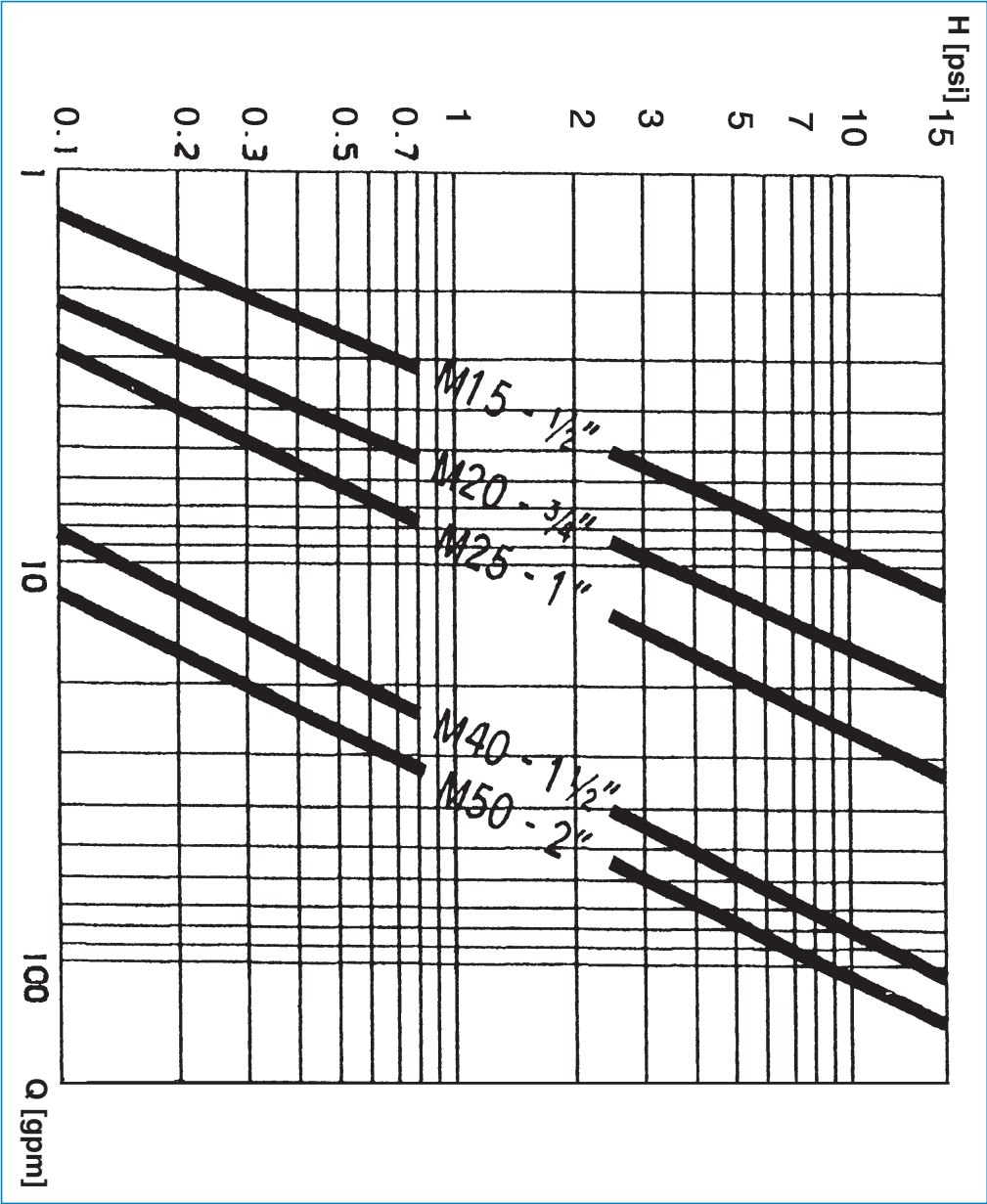
- Dial face - Horizontal.



PERFORMANCE

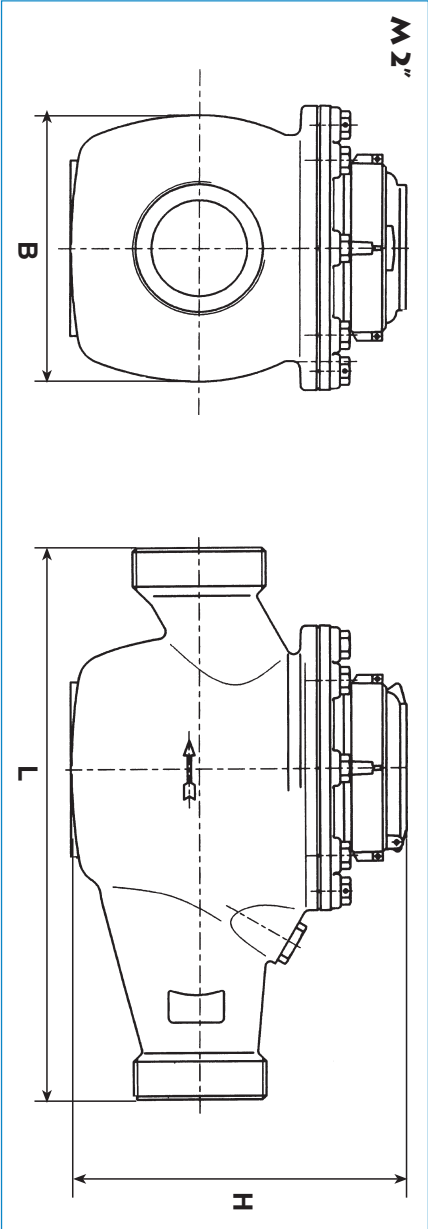
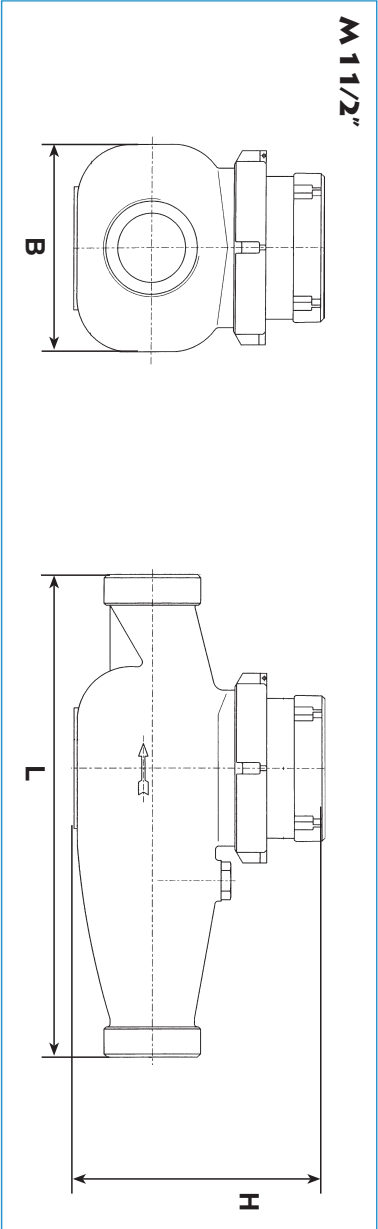
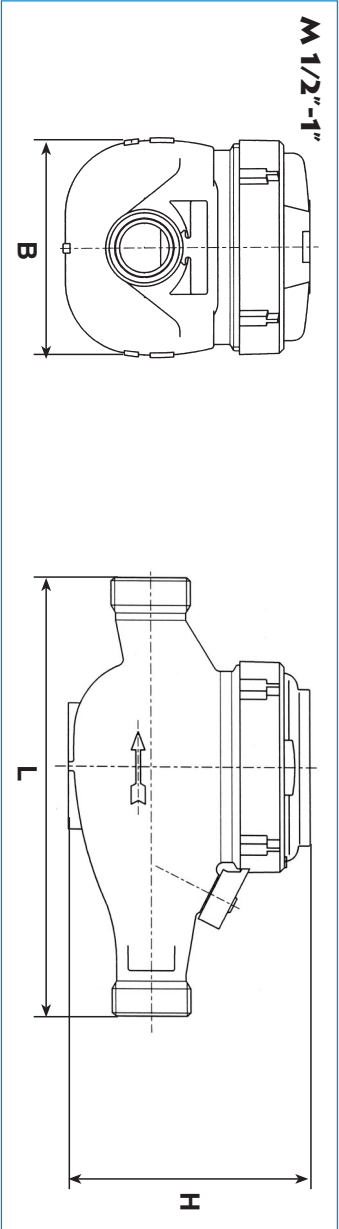
| Model                 | M15         | M20  | M25/7 | M30 | M40    | M50    |
|-----------------------|-------------|------|-------|-----|--------|--------|
| Nominal size          |             |      |       |     |        |        |
|                       | inch        | 1/2" | 3/4"  | 1"  | 1 1/4" | 1 1/2" |
|                       |             |      |       |     |        | 2"     |
| Maximum flowrate      | Qmax        | gpm  | 13.2  | 22  | 31     | 53     |
|                       |             |      |       |     |        | 88     |
|                       |             |      |       |     |        | 132    |
| Nominal flowrate      | Qn          | gpm  | 6.6   | 11  | 15.4   | 26.4   |
|                       |             |      |       |     |        | 44     |
|                       |             |      |       |     |        | 66     |
| Transitional flowrate | Qt          | gpm  | 0.52  | 0.9 | 1.2    | 2.1    |
|                       |             |      |       |     |        | 3.5    |
|                       |             |      |       |     |        | 13.2   |
| Minimum flowrate      | Qmin        | gpm  | 0.13  | 0.2 | 0.3    | 0.25   |
|                       |             |      |       |     |        | 0.9    |
|                       |             |      |       |     |        | 2      |
| Accuracy between      | Qmax and Qt |      | ±2%   | ±2% | ±2%    | ±2%    |
|                       |             |      |       |     |        |        |
| Accuracy between      | Qmin - Qt   |      | ±5%   | ±5% | ±5%    | ±5%    |
|                       |             |      |       |     |        |        |

HEAD LOSS CURVE



Dimensions

| Model                          |      | M       |         |         |         |         |         |
|--------------------------------|------|---------|---------|---------|---------|---------|---------|
| Nominal size                   | mm   | 15      | 20      | 25      | 30      | 40      | 50      |
|                                | inch | 1/2"    | 3/4"    | 1"      | 1 1/4"  | 1 1/2"  | 2"      |
| L - Length without tail pieces | inch | 6 1/2"  | 7 1/2"  | 10 1/4" | 10 1/4" | 11 3/4" | 11 3/4" |
| L - Length with tail pieces    | inch | 10 1/4" | 11 1/4" | 14 3/4" | 14 1/4" | 17 1/4" | 18 3/4" |
| B - Width                      | inch | 3 3/4"  | 3 3/4"  | 4 1/4"  | 4 1/4"  | 15      | 6 1/4"  |
| H - Height                     | inch | 4 1/4"  | 4 1/4"  | 4 1/4"  | 4 1/2"  | 6 3/4"  | 7 1/2"  |
| Weight                         | lbs  | 4.1     | 4.4     | 6.1     | 6.1     | 15      | 22.7    |







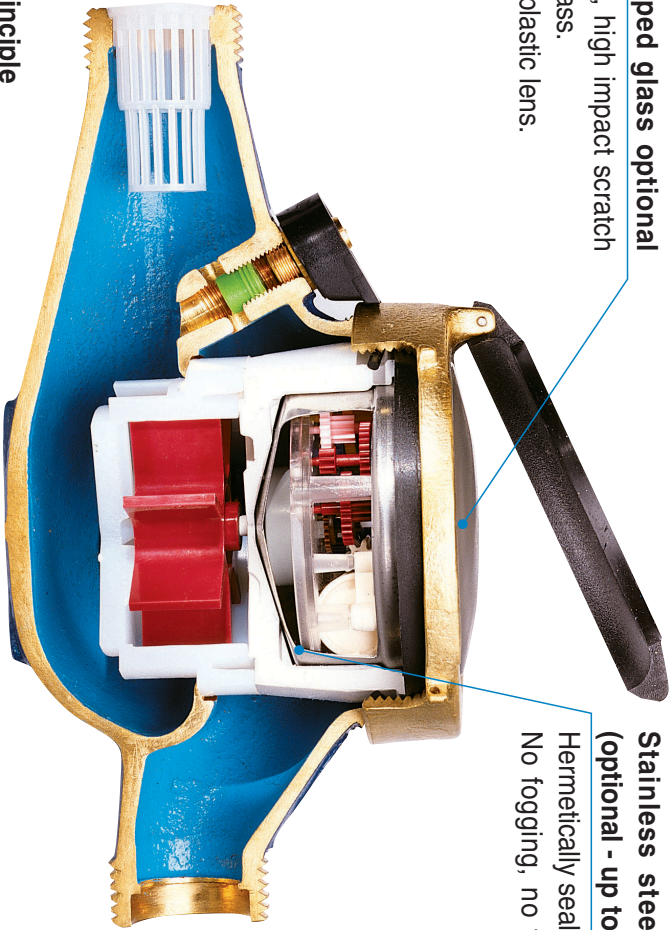
# CUT-AWAY 1''

## Dome shaped glass optional

Toughened, high impact scratch resistant glass.  
Standard - plastic lens.

## Stainless steel capsule (optional - up to 1")

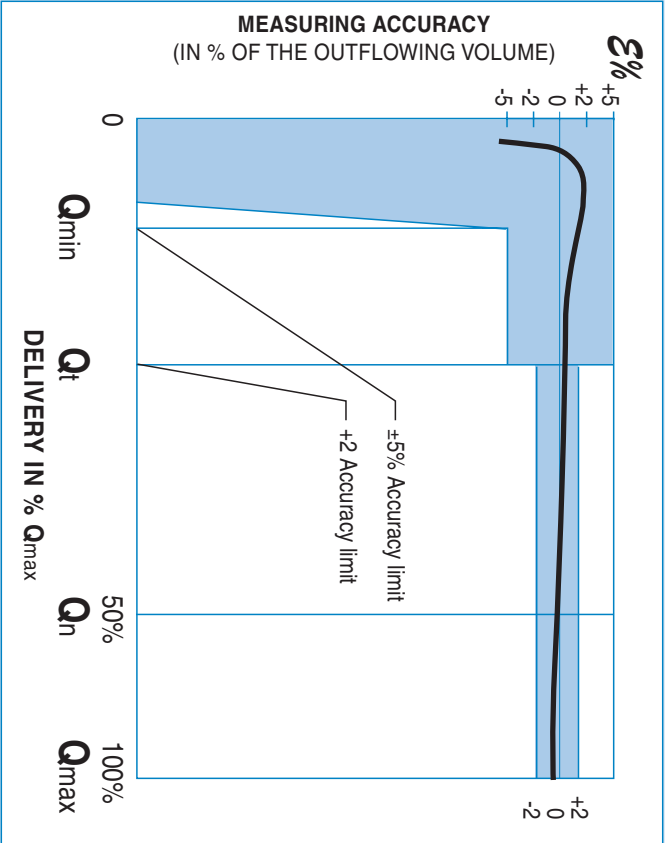
Hermetically sealed register. No fogging, no tampering.



## Multi-jet principle

Assures an equally distributed load on the impeller, thereby minimizing wear and maintaining accuracy. The measuring unit is built with wide clearances to allow sand and other impurities to pass through the meter without affecting it's performance.

# ACCURACY CURVES



Netafim USA 5470 E. Home Ave. Fresno, CA 93727 Tel: 559.453.6800 Fax: 559.443.9815

TD-113 8.03 M Netafim