

EQUIPMENT PAD CATALOG

June 2002



One source. Many solutions.

HEF-T-PADS

The illustrations below demonstrate three of the many applications for the Hef-T-Pad equipment pad.

The Hef-T-Pad is injection molded from high impact polyolefin with UV inhibitors making it easy to handle, yet durable and strong. It does not require any additional equipment for moving and handling. It is resistant to impact, ultra violet degradation and weathering and will not crack, flake or warp. The Hef-T-Pad is virtually impervious to climatic variations. It is drillable to permit installation of refrigerant and electrical lines under and through the pad and to allow equipment to be easily secured to the pad. The Hef-T-Pad features a unique non-creep surface which allows it to absorb vibration, noise and keep the equipment in its original position.

2" HEF-T-PADS

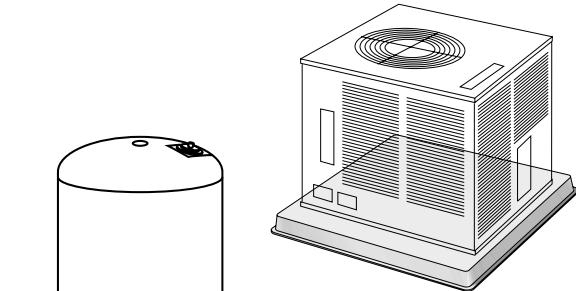
Product Class 40PD

Part No.	Description	Color	Pkg. Qty.	Wt. Ea. (lbs.)	List Price (ea.)
X2424211	24"x24"x2" One Piece	Gray	24	6.60	15.05
X2430211	24"x30"x2" One Piece	Gray	24	8.39	19.50
X2436211	24"x36"x2" One Piece	Gray	24	10.00	23.99
X2442201	24"x42"x2" Modular	Gray	24	13.46	28.50
X2448201	24"x48"x2" Modular	Gray	24	15.58	33.05
X2454201	24"x54"x2" Modular	Gray	24	17.70	37.75
X2460201	24"x60"x2" Modular	Gray	24	19.82	42.45
X3232211	32"x32"x2" One Piece	Gray	24	10.90	24.60
X3244211	32"x44"x2" One Piece	Gray	24	13.85	32.15
X3830211	38"x30"x2" One Piece	Gray	24	13.65	25.99
X3836211	38"x36"x2" One Piece	Gray	24	13.60	33.10
X3842211	38"x42"x2" One Piece	Gray	24	17.26	40.30
X3848201	38"x48"x2" Modular	Gray	24	27.97	48.05
X3854201	38"x54"x2" Modular	Gray	24	32.60	54.60
X3860201	38"x60"x2" Modular	Gray	24	37.23	61.65

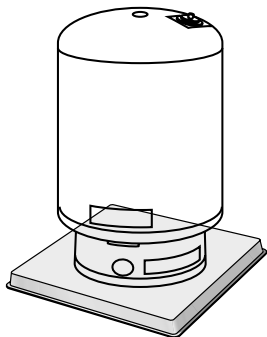
3" HEF-T-PADS

Product Class 40PD

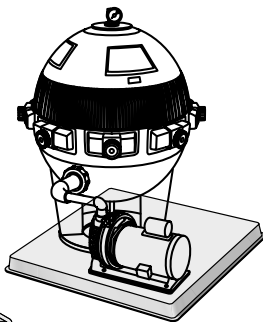
Part No.	Description	Color	Pkg. Qty.	Wt. Ea. (lbs.)	List Price (ea.)
X2424311	24"x24"x3" One Piece	Gray	16	9.40	18.45
X2430301	24"x30"x3" Modular	Gray	16	23.74	24.05
X2436311	24"x36"x3" One Piece	Gray	16	12.00	29.50
X2442301	24"x42"x3" Modular	Gray	16	13.46	34.70
X2448301	24"x48"x3" Modular	Gray	16	28.56	40.30
X2454301	24"x54"x3" Modular	Gray	16	30.97	46.10
X2460301	24"x60"x3" Modular	Gray	16	33.37	51.60
X3030311	30"x30"x3" One Piece	Gray	16	13.40	24.45
X3232311	32"x32"x3" One Piece	Gray	16	15.60	27.95
X3238311	32"x38"x3" One Piece	Gray	16	15.37	36.05
X3244311	32"x44"x3" One Piece	Gray	16	13.91	39.30
X3636311	36"x36"x3" One Piece	Gray	16	16.80	38.95
X3848311	38"x48"x3" One Piece	Gray	16	23.60	49.75
X5055301	50"x55"x3" Modular	Gray	16	42.10	88.99
X6255301	62"x55"x3" Modular	Gray	16	56.92	121.70
X7455301	74"x55"x3" Modular	Gray	16	71.74	153.99
X8655301	86"x55"x3" Modular	Gray	16	86.56	186.45
X2600311	26" Diameter Round One Piece	Gray	16	3.50	17.75
X3600311	36" Diameter Round One Piece	Gray	16	16.60	36.95



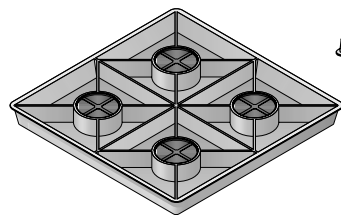
Hef-T-Pad with A/C Unit



Hef-T-Pad with Diaphragm Tank



Hef-T-Pad with Pool Pump & Filter



Underside of Hef-T-Pad showing support ribs, stabilization pads and stabilization flange.

ASTM SPECIFICATIONS HEF-T-PAD

Properties	Rockwell Hardness	Tensile Strength	Flexural Strength	Impact Strength	Stiffness in Flexure	Melting Point	Heat Distortion
ASTM Test	D-785	D-638	D-790	D-256	D-747	80 21-2	D-648
Results	R-68	3900 psi	3890 psi	24 lbs/in	118,000 psi	323.6°F	186.6°F

Other test results available upon request.

Note: All dimensions are nominal. All weights are for shipping purposes only. Prices are subject to change.

For customer service, please send your fax to: 1-800-726-1998 or call 1-800-726-1994.

HEF-T-PAD TESTING INFORMATION

APPROVALS

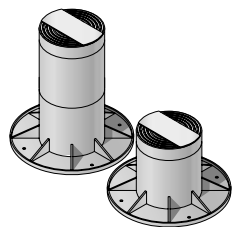
- ICBO Evaluation Report #4869
- Tennessee Valley Authority Report #9-88 (MR 35 75E-C)
- City of Los Angeles Report #RR 7756
- City of Fort Worth Report #4-93

TESTING

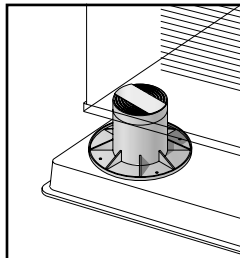
- Uniform Load – 2" and 3" Height 46,389 lbs. Of applied force
- Concentrated Load – 883 - 2,067 lbs. Force sustained (1" dia. Pad with 1/32" rounded edges)
- Ignition Properties of Plastic
- Chemical Resistance – See NDS Chemical Resistance Guide

Meets or exceeds the requirement of:

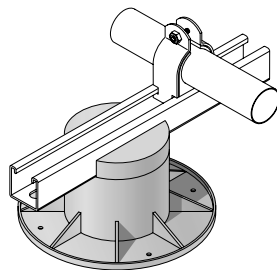
- Uniform Building Code Std. No. 52-2
Density of Smoke from the Burning or Composition of Plastic Material
- Uniform Building Code Section 417 (ASTM D1929-75)
Ignition Properties of Plastic



**Column Risers
with Non-Slip Pads**



Column Riser on Hef-T-Pad



**Slotted Riser with
Support Channel and
Pipe Clamp**

COLUMN RIZERS

Product Class 40PD

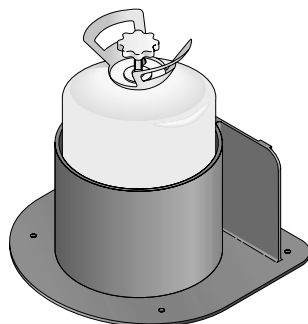
- Available in 4", 8", 12", and 16" heights. 2" and 4" Riser for insert available.
- Allows heat pumps to be raised for proper ventilation.
- Available with slot for for A/C channel brackets.
- Injection molded from high performance polyolefin with UV inhibitors for durability and strength.

Part No.	Description	Color	Pkg. Qty.	Wt. Ea. (lbs.)	List Price (ea.)
X401	4" Riser	Gray	48	0.63	3.10
X401SP	4" Bracket Riser	Gray	48	0.61	5.12
X801	8" Riser	Gray	24	1.04	3.99
X1201	12" Riser	Gray	16	1.25	5.35
X1601	16" Riser	Gray	16	1.39	7.60
X441	4" Riser Insert	Gray	48	0.30	2.90
X221	2" Riser Insert	Gray	96	0.15	2.90

NO DRUM ROLLS

Product Class 40PD

- Available to carry 30# refrigerant cylinders.
- Eliminate the hazard and damage from sliding and tumbling of unsecured cylinders.
- Unique design will allow it to be free standing or permanently mounted.
- Injection molded from high performance polyolefin with UV inhibitors for durability and strength.



**No Drum Roll with
Refrigerant Cylinder**

Part No.	Description	Color	Pkg. Qty.	Wt. Ea. (lbs.)	List Price (ea.)
X2850100	30#	Black	6	5.36	22.20
X2850200	30#	White	6	5.36	22.20

Note: All dimensions are nominal. All weights are for shipping purposes only. Prices are subject to change.

TERMS AND CONDITIONS OF SALE

Terms of Payment: Standard terms are 2%, 10 days, NET 30. A 1 1/2% per month (18% per annum) service charge will be added to all past due accounts. All invoices are to be paid in US Currency.

Freight Allowance: CA, AZ, and NV: Freight prepaid on orders of \$650.00 NET or more. Freight prepaid on orders containing only equipment pads of \$1500.00 NET or more. Freight prepaid on flexible couplings only orders of 126 pieces or more. Custom DuraCast only orders freight prepaid on orders of \$2500.00 NET or more.

All other states: Freight prepaid on orders of \$1000.00 NET or more. Freight prepaid on orders containing only equipment pads of \$1500.00 NET or more. Freight prepaid on orders containing only Flo Control Products of \$700.00 NET or more. Freight prepaid on flexible couplings only orders of 126 pieces or more. Custom DuraCast only orders freight prepaid on orders of \$2500.00 NET or more. Custom orders may require a higher prepaid freight level. Prepaid freight levels are based on shipments to one location only. It is the responsibility of the customer to determine if his purchase order meets the minimum freight allowance required. NDS reserves the right to select the carrier and point of shipment.

Errors & Claims: All claims for shortage in shipment or damaged material must be noted on the "Bill of Lading" and a written request for credit submitted to NDS within 15 days of shipment. NDS responsibility ceases upon delivery to the carrier.

Returned Goods: Returned goods will be accepted only after written approval and shipping instructions are received from NDS. A return goods authorization number is required and must be on all cartons, documents, and correspondence. All returns are subject to a 15% restocking charge, freight cost of returned goods (plus "out freight if applicable"). A higher restocking charge may be assessed against any return requiring extraordinary handling costs.

Minimum Order: \$50.00 minimum order net billing. A 15% broken box charge will be added for other than full box quantities.

Limited One Year Warranty: The liabilities of NDS are limited solely and exclusively to replacement as set forth in our standard "Statement of Warranty", alone and do not include any liability for incidental, consequential or other damage of any kind whatsoever, whether any claim is based upon theories of contract, warranty, negligence or tort and without any

limitations and do not include shipping charges, labor, installation or any other losses or expenses incurred in operation of any replacement specialty item or fitting. NDS drainage products are designed to be used for exterior surface drainage only.

Limited Lifetime Warranty: NDS warrants to the original owner of its NDS catch basins, grates, channel and Pro Series valve boxes, subject to the conditions set forth in this warranty, that NDS catch basins, grates, channel and Pro Series valve boxes will remain free from manufacturing defects.

All NDS products are guaranteed against defects resulting from faulty workmanship or materials. Claims for labor costs and other expenses required to replace defective products or repair of any damage resulting from the use thereof will not be allowed by NDS. Our liability is limited to replacement of products acknowledged by NDS to be defective.

Exclusive Warranties and Remedies: The FOREGOING REMEDIES ARE EXCLUSIVE AND ARE GIVEN AND ACCEPTED IN LIEU OF (I) ANY AND ALL OTHER WARRANTIES, EXPRESSED OR IMPLIED, INCLUDING WITHOUT LIMITATION THE IMPLIED WARRANTIES OF MERCHANTABILITY AND FITNESS FOR PARTICULAR PURPOSE; AND (II) ANY OBLIGATION, LIABILITY, RIGHT, CLAIM OR REMEDY IN CONTRACT OR TORT, WHETHER OR NOT ARISING FROM NDS, INC.'S NEGLIGENCE, ACTUAL OR IMPUTED. The remedies of customer shall be limited to those provided herein to the exclusion of any and all other remedies including, without limitation, incidental or consequential damages. No agreement varying or extending the foregoing warranties or these limitations will be binding on NDS, Inc., unless such is signed in writing by an authorized officer of NDS, Inc.

The liability of NDS, Inc., hereunder shall be limited to restoring to good working order, provided that NDS, Inc., is not required to restore the product to good working order when such failure is due to causes beyond NDS, Inc.'s control, including but not limited to, acts of God, acts of civil or military authority, priorities, strikes, floods, epidemics, war, riots, and other causes that are beyond the manufacturers control.

These provisions are complete and exclusive statements of all terms and conditions between NDS, Inc., and the consumer. These provisions may not be varied, supplemented, qualified or interpreted by any prior course of dealings, written or oral or by trade usage. No NDS, Inc. agent, officer or employee has authority to make any representation, promise or warranty concerning these provisions.



- Catch Basins & Grates
- Channel Drains
- Agrifim Drip Irrigation
- Equipment Pads
- Flo-well Stormwater Leaching Systems

- Flo Control Specialty Fittings
- Flo Control Check Valves
- Flo Control Ball Valves
- Backwater & Diverter Valves
- Sewer & Drain Fittings

- Grass Pavers
- Root Barriers
- Valve & Meter Boxes
- Flexible Couplings
- Flexible Saddles

NDS Product Catalogs

Drainage Catalog • Drip & Micro Irrigation Product Catalog • Equipment Pad Catalog • Fittings Catalog
Landscape Product Catalog • Specialty Valves and Fittings Catalog • Valve and Meter Box Catalog

PARTIAL CLIENT LIST

The White House
Los Angeles Country Club
Pebble Beach
Cypress Point
Spyglass Hill
PGA West Stadium Golf Course
Princeville Golf Course
Ritz Carlton
Santa Barbara Zoo

Sheraton Hotels
Sherwood Country Club
Soldier Field
Del Webb & Sun City Country Clubs
Westin Hotels
Riviera Country Club
Buchtart Gardens
Disney World
Disneyland

Florida University
Harbortown Golf Links
Hyatt Grand Champions
La Quinta Resort
Marriott Hotels
MGM Grand Hotel & Theme Park
Mirage Hotel
Jack La Lane Athletic Clubs
Olympic Training Center

Address/Telephone
P.O. Box 339 • 851 N. Harvard Avenue
Lindsay, CA 93247
Phone: 800-726-1994
Fax: 800-726-1998
International Phone: 559-562-9888
International Fax: 559-562-4488
e-mail: NDS@NDSPRO.com

www.NDSPRO.com

Regional Warehouses:

- Lindsay, CA
- Dallas, TX
- Atlanta, GA
- Seattle, WA
- Philadelphia, PA
- Chicago, IL
- Orlando, FL
- Puerto Rico