



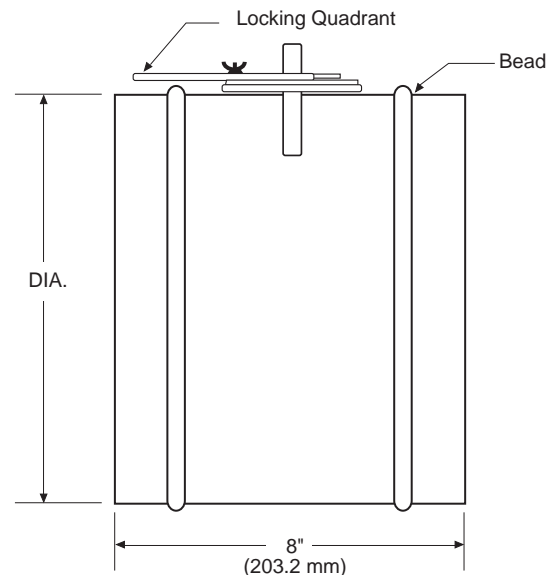
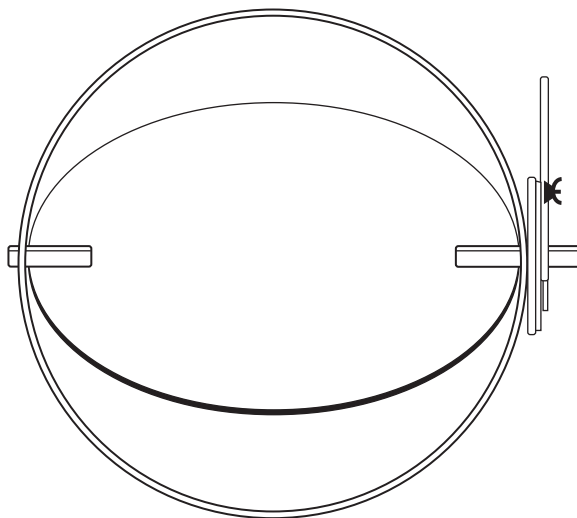
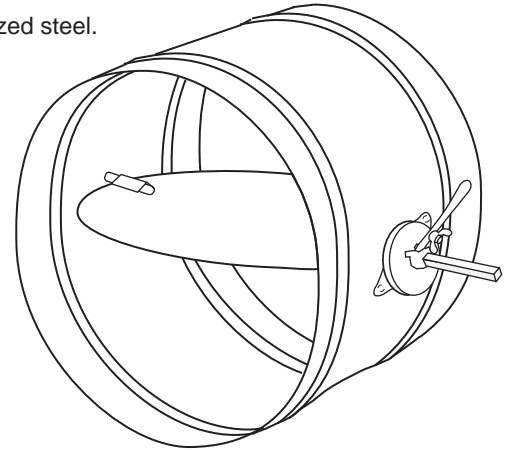
MODEL PBD-20RS BALANCING DAMPER – ROUND

© 1999 NCA Manufacturing

Standard Construction:

Frame:	8" (203.2 mm) long sleeve, 20 ga. galvanized steel.
Blades:	18 ga. galvanized steel.
Axles:	1/4" (6.4 mm) square plated steel.
Finish:	Mill galvanized.
Minimum Size:	4" (101.6 mm) diameter
Maximum Size:	20" (508 mm) diameter
Operator:	Locking quadrant

- Notes:**
- All dampers are fabricated 1/8" (3.2 mm) under listed size unless otherwise specified "actual or exact".
 - Not recommended for motor operation.
 - Maximum recommended velocity is 1500 FPM.
 - For sizes larger than 20" (508 mm) use PDB-100RS.



PBD20RS - 7-00

Specifications are correct at time of printing. However, as part of our 'continuous improvement program,' we reserve the right to make further improvements without notice.

Project:
Location:
Architect:
Engineer:

Contractor:
Address:
P.O. Number:
Date: