



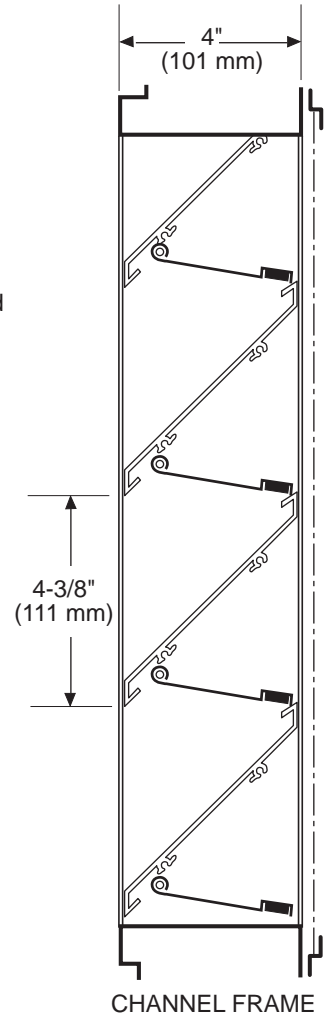
*MODEL CI-XAJ-4
COMBINATION LOUVER INTAKE
STRAIGHT BLADE*

Standard Construction:

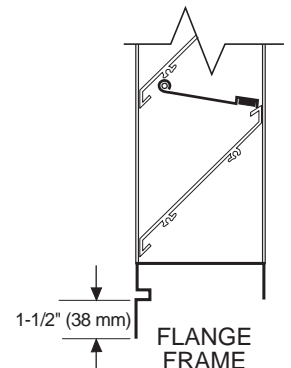
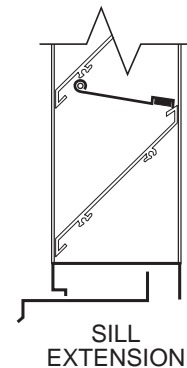
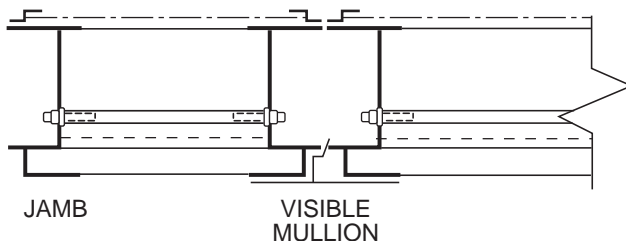
- Frame:** 4" x .081 (101 mm x 2.1 mm) extruded aluminum (6063-T5).
Stationary Blades: .081 (2.1 mm) extruded aluminum (6063-T5).
 approximately 4-3/8" (111 mm) on centers.
Blade Angle: 45°
Backdraft Blade: .025 (6.4 mm) formed aluminum.
Axles: 3/16" (4.8 mm) dia. nylon.
Blade Seals: Polyurethane foam.
Screen: Bird screen - 3/4" x .050 (19 mm x 12.7 mm) flattened expanded aluminum in a removable frame on interior of louver.
Finish: Mill aluminum.
Size: Minimum: 12"w x 12"h (25.4 mm x 25.4 mm)
 Maximum: Single Section - 36"w x 72"h (914 mm x 1828 mm)
 Multi section - unlimited.

Options:

- Screens:** Insect screen - 18 x 16 mesh aluminum.
 Other: _____
Finish: Prime Coat.
 Baked Enamel.
 Clear Anodize - 204-R1 & 215-R1.
 Integral Color Anodize
 Kynar 500 Enamel.
 Other: _____
Sill Extensions:
Flange: 1-1/2" (38 mm) (front or rear)



CI-XAJ-4 - 02-05



Specifications are correct at time of printing. However, as part of our 'continuous improvement program,' we reserve the right to make further improvements without notice.
 © JULY, 2000 NCA Manufacturing

Project:
 Location:
 Architect:
 Engineer:

Contractor:
 Address:
 P.O. Number:
 Date: