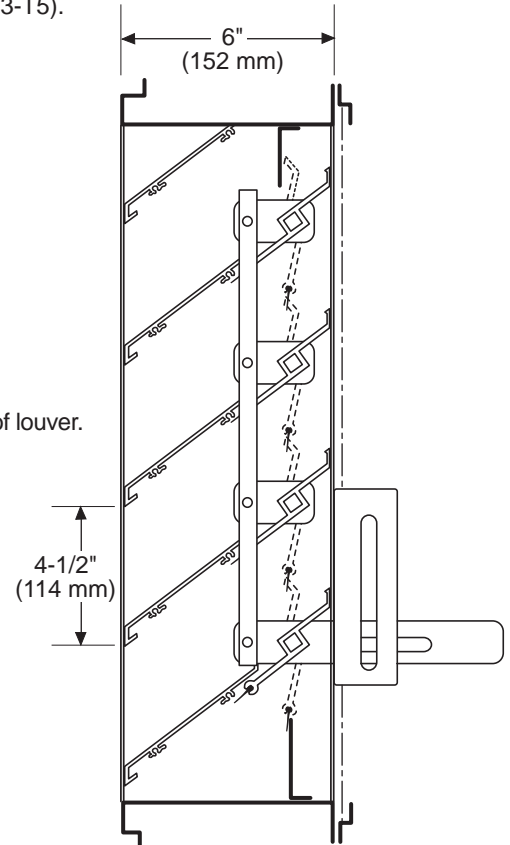




MODEL CA-XAJ-6 *COMBINATION LOUVER* *STRAIGHT BLADE*

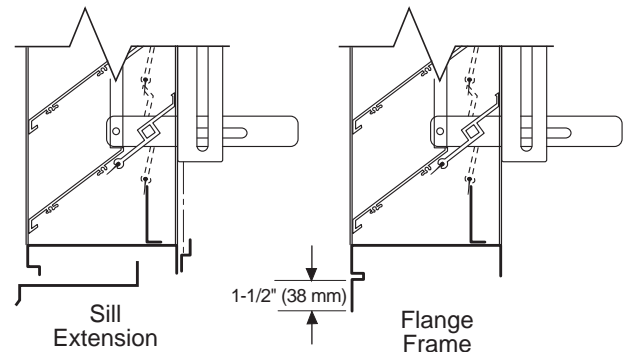
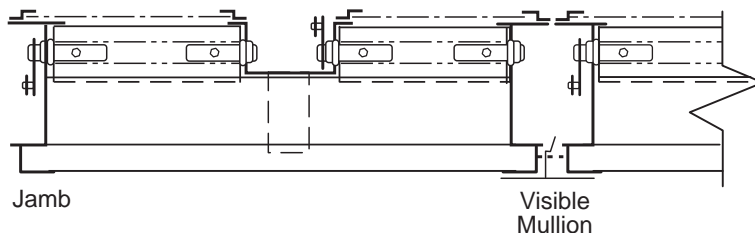
Standard Construction:

- Frame:** 6" x .080 (152 mm x 2 mm) extruded aluminum (6063-T5).
- Stationary Blades:** .081 (2.1 mm) extruded aluminum (6063-T5)
approximately 4-1/2" (114 mm) on centers.
- Adjustable Blades:** .125 (3.2 mm) extruded aluminum (6063-T5).
- Blade Angle:** 37.5°
- Bearings:** Permanently lubricated oilite bronze,
press fit into frame.
- Axles:** 3/8" (9.5 mm) square plated steel.
- Linkage:** Plated steel, concealed in jamb.
- Operator:** Wing nut side bracket.
- Blade Seals:** Extruded Vinyl.
- Jamb Seals:** Flexible stainless steel.
- Screen:** Bird screen - 3/4" x .050 (19 mm x 12.7 mm) flattened
expanded aluminum in a removable frame on interior of louver.
- Finish:** Mill aluminum.
- Minimum Section Size:** 12"w x 12"h (25.4 mm x 25.4 mm)
- Maximum Section Size:** 48"w x 72"h (1219 mm x 1829 mm)
- Options:**
 - Screens:** Insect screen - 18 x 16 mesh aluminum
Other: _____
 - Finish:** Prime Coat.
Baked Enamel.
Clear Anodize - 204-R1 & 215-R1.
Integral Color Anodize
Kynar 500 Enamel.
Other: _____
- Sill Extensions:**
- Flange:** 1-1/2" (38 mm) (front or rear)
- Other Operator** - _____



Channel Frame

CA-XAJ-6 - 02-05



Specifications are correct at time of printing. However, as part of our 'continuous improvement program,' we reserve the right to make further improvements without notice.
 © JULY, 2000 NCA Manufacturing

| | |
|------------|--------------|
| Project: | Contractor: |
| Location: | Address: |
| Architect: | P.O. Number: |
| Engineer: | Date: |