



MODEL BDD-SS BACKDRAFT DAMPER

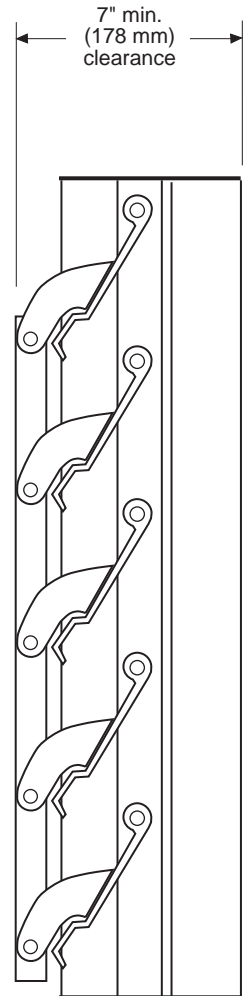
Standard Construction:

Frame:	18 ga. 304 stainless steel with welded corners.
Blades:	26 ga. 304 stainless steel
Bearings:	Nylon press fit into frame.
Axles:	3/16" (4.8 mm) dia. stainless steel rod, continuous.
Seals:	Polyurethane foam blade seals.
Linkage:	Heavy gauge stainless steel brackets and tie bar.
Finish:	Mill finish.
Minimum Damper Size:	Single Blade - 6"w x 6"h (152 mm x 152 mm)
Maximum Damper Size:	Single Section - 30"w x 72"h (762 mm x 1829 mm) Multi Section - unlimited.

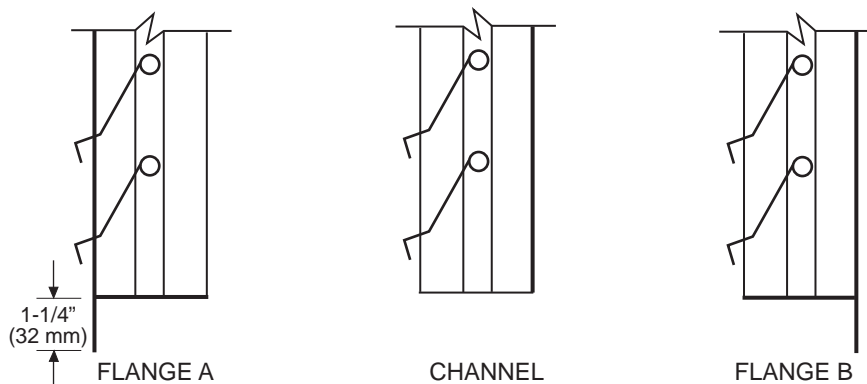
Options:

Counterweights:	Assist or Retard
Mount:	Counter balance weights required for horizontal mount.
Flange:	1-1/4" (32 mm) flange frame, (front or rear)
Notes:	<ul style="list-style-type: none">• All dampers are fabricated 1/4" (6.4 mm) under listed size unless specified 'actual or exact'.• Dampers must be installed square and free from racking.

Performance:	Maximum Velocity: 1500 fpm Maximum Static Pressure: 1.5" w.g.
---------------------	--



BDD-SS-07-00 (BDD-SS)



Specifications are correct at time of printing. However, as part of our 'continuous improvement program,' we reserve the right to make further improvements without notice.

© 1999 NCA Manufacturing

Project:
Location:
Architect:
Engineer:

Contractor:
Address:
P.O. Number:
Date: