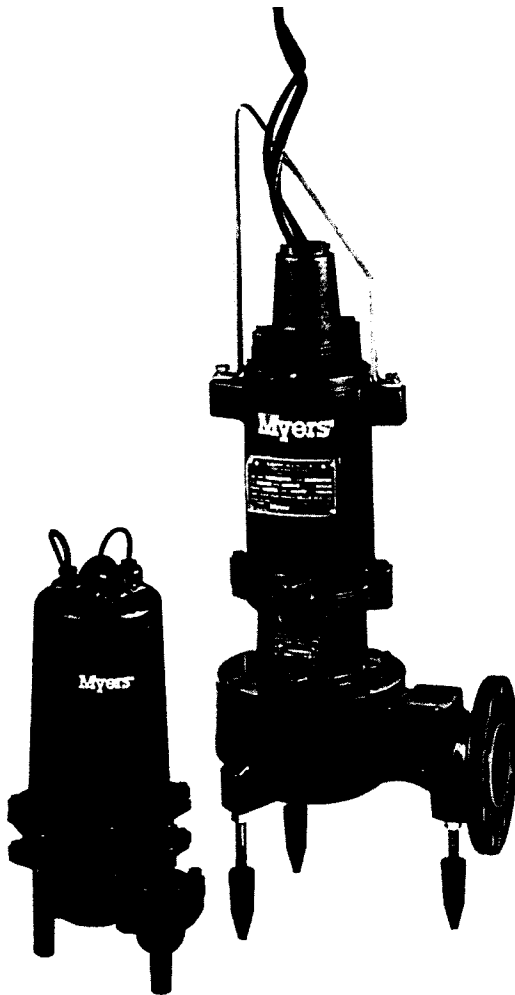


AG Series

Agricultural Sewage Pumps
Standard and Explosion-Proof Construction
1-5 HP



MYERS AG SERIES IS DESIGNED SPECIFICALLY FOR USE IN AGRICULTURAL LAGOON AND SEWAGE PIT APPLICATIONS. The AG Series is the right choice to handle stringy trash, fibrous wastes, slurries and other difficult to pump solids without plugging the impeller. The AG pumps have been field proven to provide reliable operation and dependable performance. Myers offers a complete line of wastewater pumps, controls and accessories to meet your needs. For more information, contact your Myers distributor or Myers headquarters located in Ashland, Ohio at 419/289-1144.

ADVANTAGES BY DESIGN

■ Non-Clog Operation

- Passes stringy trash, fibrous waste and other difficult solids without plugging the pump
- Pumping action is by Vortex; solids cannot get caught in completely open volute passage
- Easily passes solids;
 - 1 & 2 HP - 1½" solids
 - 3 & 5 HP - 3" solids

■ Strong Pumping Performance

- Heads to 70 feet
- Capacities to 500 gpm

■ Durable, Long-Life Construction

- Tough powder coated finish on complete liquid end prevents build-up of salt crystals and solids
- Heavy-duty cast iron construction
- Heavy-duty motor equipped with thermal overload protection and automatic reset
- Double shaft seals and seal leak probe for maximum motor protection

■ Simple, Easy Installations

- All pumps equipped with lifting handle and legs

Construction Materials	
Motor Housing, Seal Housing, Cord Cap and Volute Case	cast iron, Class 30 ASTM A48-76
Recessed, Impeller	1 & 2 HP - bronze 3 & 5 HP - ductile iron Class 65, ASTM A536-80
Power and Control Cord	25 ft. SOW/SOW-A
Mechanical Seals Upper (back-up) Lower (main)	double tandem, type 2100 carbon and ceramic silicon, carbide
Pump, Motor Shaft	416 SST
Fasteners	300 series SST
Motor	1 phase, 230V, 60 Hz 3450 rpm - 1 & 2 hp 1750 rpm - 3 & 5 hp

WHERE INNOVATION MEETS TRADITION

Myers®

Pentair Pump Group

AG1 & AG2

POWER CORDS

Jacket sealed with compression fittings. Individual wires potted with epoxy to prevent wicking in case of cord damage.

MOTOR HOUSING

Cast iron for efficient heat transfer and corrosion resistance.

BEARINGS

Upper and lower ball support rotor. Take radial and thrust loads.

MOTOR

1 and 2 HP, single phase, 60 Hz, 3450 RPM. Single phase PSC motors have built-in on winding overload protection, oil-cooled and lubricated.

SHAFT SEAL(S)

Dual tandem seals extends motor life. Lower - silicon carbide; Upper - carbon ceramic. Cartridge type seal prevents material accumulation.

SEAL LEAK PROBE

Detects water leakage in seal housing. Activates warning light.

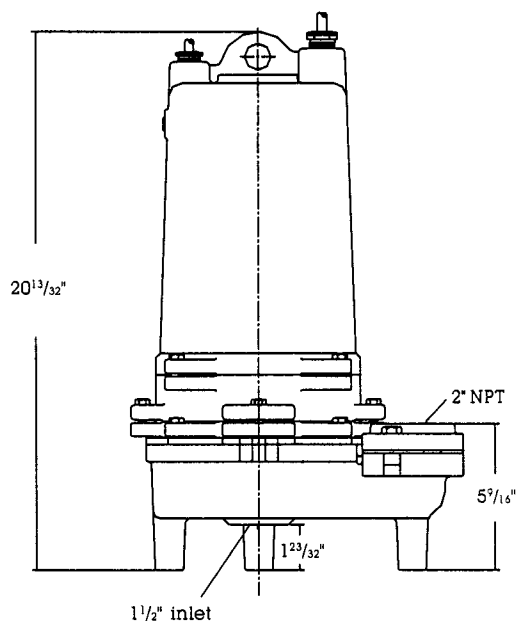
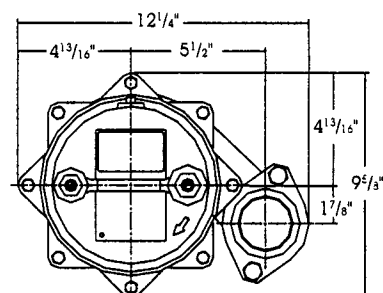
IMPELLER

Recessed completely out of volute passage. Completely powder coated finish.

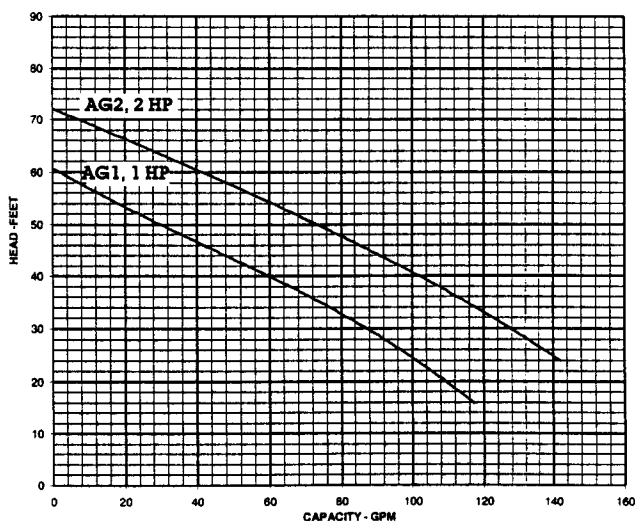
VOLUTE CASE

Cast iron with support legs. Passes 1½" solids. Powder paint coated inside and outside.

DIMENSIONS



PERFORMANCE CURVE



AG3/AGX3 & AG5/AGX5

POWER CORDS
SOW-A, UL and CSA
approved oil-resistant
cable.

CABLE ENTRY SYSTEM
Provides double seal
protection. Cable jacket
sealed by compression
grommet. Individual
wires sealed by epoxy
potting.

HEAT SENSOR
Protects motor from
burnout due to excessive
heat from any overload
condition. Automatically
resets when motor has
cooled.

STATOR
Heat shrunk into housing
for perfect alignment and
best heat transfer. Oil-
filled motor conducts heat
and lubricates bearings.

BALL BEARINGS
Upper and lower ball
bearings support shaft
and rotor and take axial
and radial loads.

SHAFT SEALS
Double tandem
mechanical shaft seals
protect motor.
Oil-filled seal chamber
provides continuous
lubrication.

SEAL LEAK PROBES
Detect water in seal
housing. Activates
warning light in control
panel. (Test resistor on
UL listed models.)

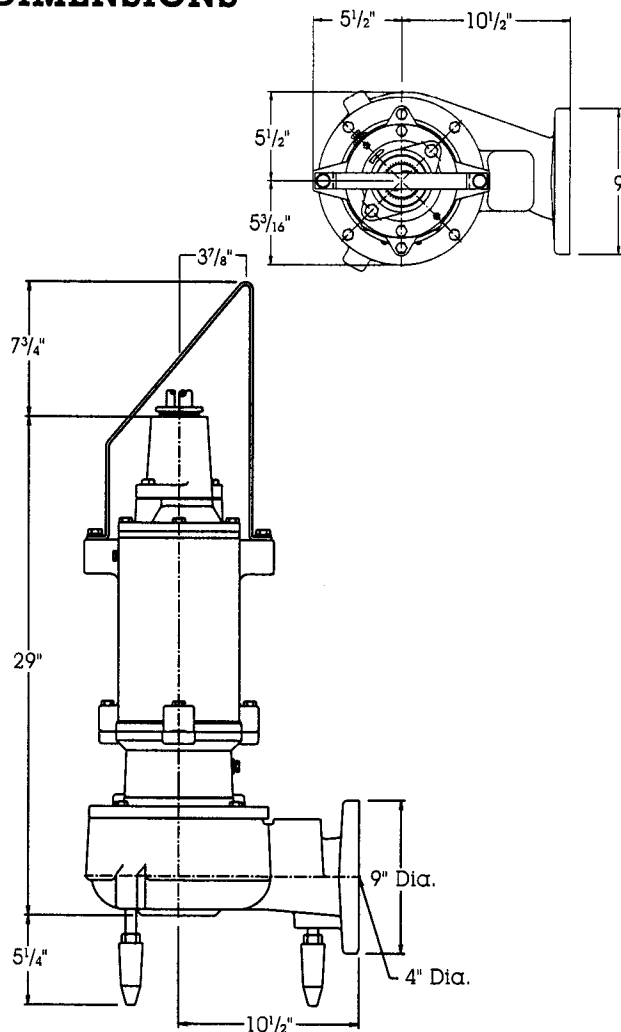
**HEAVY 416
SST SHAFT**
Corrosion
resistant.

SLEEVE BEARING
Takes radial shock
load; provides flame
path. (UL listed
pumps only.)

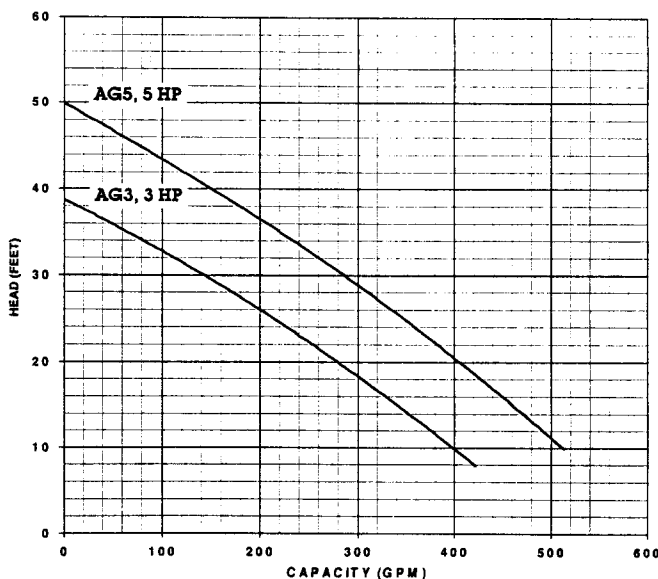
RECESSED IMPELLER
Handles stringy trash and
slurries without clogging
or binding. Pump out
vanes help keep trash
from seal; reduces
pressure at seal faces.

VOLUTE CASE
Handles 3" solids.
Completely open
from inlet to
discharge. 4" ANSI
125 lb. flange.

DIMENSIONS



PERFORMANCE CURVE



AG Series

Agricultural Sewage Pumps
Standard and Explosion-Proof Construction
1-5 HP

PUMP TECHNICAL DATA

MODEL	HP	VOLTS	PHASE	Hz	RPM	MAX AMPS	SOLIDS HANDLING	WEIGHT (LBS.)
AG1	1	230	1	60	3450	9	1½"	90
AG2	2	230	1	60	3450	13	1½"	95
AG3	3	230	1	60	1750	21	3"	200
AG3X	3	230	1	60	1750	21	3"	200
AG5	5	230	1	60	1750	41	3"	210
AG5X	5	230	1	60	1750	41	3"	210

CONTROL BOXES

MODEL	HP	VOLTS	PHASE	TYPE	NEMA	SHIP WT. LBS.
CMEP(SL)-21SW	1 & 2	230	1	Simplex	4 X	12
CMEP(SL)-21DW	1 & 2	230	1	Duplex	4 X	20
CNC-30-21SW	3	230	1	Simplex	4 X	21
CNC-30-21DW	3	230	1	Duplex	4 X	35
CNC-50-21SW	5	230	1	Simplex	4 X	21
CNC-50-21DW	5	230	1	Duplex	4 X	35

1. Panels meet U.L. approval, U.L. label will be installed.
2. All panels have seal leak light.
3. CNC simplex single phase panels include: NEMA 4X FRP enclosure, 17-1/2" x 15-7/8" x 7-11/16" overall dimensions; two drawn down hasps with provision for pad locking; switches and indicator lights mounted on dead front full inner door; 2-pole pump circuit breaker; start relay; start capacitor(s); run capacitor(s); IEC rated magnetic contactor; pump H-O-A switch; alarm test switch; amber pump run light; red seal leak indicator light; heat sensor circuit; 1-pole, ambient compensated, quick trip, overload relay; terminal blocks; ground lug; flashing red alarm light (40 watt) with polycarbonate globe; separate alarm and control fuses.
4. CNC duplex single phase panels include: NEMA 4X FRP enclosure, 19-5/8" x 17-1/2" x 10-5/8" overall dimensions; two drawn down hasps with provision for pad locking; switches and indicator lights mounted on dead front full inner door; two 2-pole pump circuit breakers; two sets start relays; two sets start capacitors; two sets run capacitors; two IEC rated magnetic contactors; two pump H-O-A switches; alarm test switch; two amber pump run lights; two red seal leak indicator lights; two heat sensor circuits; two 1-pole, ambient compensated, quick trip, overload relays; terminal blocks; ground lug; flashing red alarm light (40 watt) with polycarbonate globe; separate alarm and control fuses; alternator relay; override relays.
5. Simplex control panels require three float controls, duplex require four float controls, must be ordered separately.

FLOAT SWITCHES

MODEL	DESCRIPTION	SHIP WT. LBS.
SM15NO	Mercury switch sealed in polypropylene float ball weight attached to cord 15' of 18/2 SJOW/A cord, rated 125VA @ 115VAC ball colored green	5
SM25NO	Same as above, except 25' cord length	7