

4VL and 4VLX (EXPLOSION-PROOF)

4" High Head Non-Clog Wastewater Pumps
Standard (4VL) and Explosion-Proof (4VLX) Construction



APPROVED
(4VLX only)



THE MYERS 4VL SUBMERSIBLE NON-CLOG SEWAGE PUMPS ARE DESIGNED ESPECIALLY FOR HIGH FLOW APPLICATIONS SUCH AS: municipal lift stations, treatment plants, transfer stations and dewatering. A quick removal type rail system is available to simplify installation and maintenance. The 4VL's ability to handle solids up to 3 inches in diameter make it ideal for most high flow wastewater applications. For more information, contact your Myers distributor, or the Myers Ohio sales office at 419-289-1144.

ADVANTAGES BY DESIGN

HIGH EFFICIENCY HYDRAULIC DESIGN CUTS PUMPING COSTS AND EXTENDS THE LIFE OF THE PUMP

- Two-vane, rounded port impeller handles 3" solids with ease at high operating efficiencies.
- Produces high head.

DURABLE MOTOR WILL DELIVER MANY YEARS OF RELIABLE SERVICE

- Class H insulation.
- Continuous duty/VFD rated.
- Oil-filled motor for maximum heat dissipation and constant bearing lubrication.
- Internal thermal overload protection.
- Double tandem shaft seals prevent sewage from entering motor.
- Internal seal leak probes warn of moisture entry.
- Triple sealed power and control cables.

PRODUCT CAPABILITIES

Capacities To	2100 gpm	8000 lpm
Heads To	275 ft.	84 m
Solids Handling	3 in.	76 mm
Liquids Handling	raw unscreened sewage, drain water, effluent	
Intermittent Liquid Temp.	up to 140°F	up to 60°C
Winding Insulation Temp. (Class H)	356°F	180°C
Available Motors	1750 RPM 50, 60, 75, 100, 125 HP 460 & 575 volts 3 phase, 60 Hz	
Std. Third Party Approvals	CSA	
Optional Approvals	FM Class 1, Groups C & D (4VLX only)	
Acceptable pH Range	6 - 9	
Specific Gravity	.9 - 1.1	
Viscosity	28 - 35 SSU	
Discharge, Horizontal	4 in.	101.6 mm

NOTE: Consult factory for applications outside of these recommendations.

Construction Materials	
Motor Housing, Seal Housing, Cord Cap and Volute Case	cast iron, Class 30 ASTM A48
Impeller	ductile iron, Class 65 ASTM A536
Power and Control Cord	25 ft. SOW/SOW-A
Double Tandem Mechanical Seals	Std. - carbon & ceramic opt. - lower tungsten carbide
Pump, Motor Shaft	416 SST
Fasteners	300 Series SST
Case Wear Ring	bronze

WHERE INNOVATION MEETS TRADITION

4VL and 4VLX (EXPLOSION-PROOF)

4" High Head Non-Clog Wastewater Pumps
Standard (4VL) and Explosion-Proof (4VLX) Construction

CABLE ENTRY SYSTEM

Cable jackets sealed with clamped, rubber grommet. Individual wires sealed with epoxy to prevent wicking in case of cable damage.

TERMINAL BOARD

Provides easy connections from power and control cables to stator. Allows voltage change in field on dual winding motors.

HEAT SENSOR ON MOTOR WINDING

Opens to de-energize motor starter if winding temperature reaches 150°C. Automatic reset.

MOTOR STATOR

Oil-filled for continuous lubrication of bearings and seals. Class H insulation.

BALL BEARINGS

Upper and lower ball bearings.

DUAL SEAL LEAK PROBES

Detect water in seal housing. Activates warning light in control panel.

DOUBLE TANDEM SHAFT SEALS

Protect motor, operate in clean oil.

HEAVY 416 SST SHAFT

Reduces deflection from impeller radial loads. Tapered and keyed to accept impeller.

HORIZONTAL DISCHARGE VOLUTE CASE

4" 125 lb. flange.

BRONZE WEAR RING

Reduces by-pass leakage and wear. Replaceable to restore original running clearances and pump efficiencies.

PUMP OUT VANES

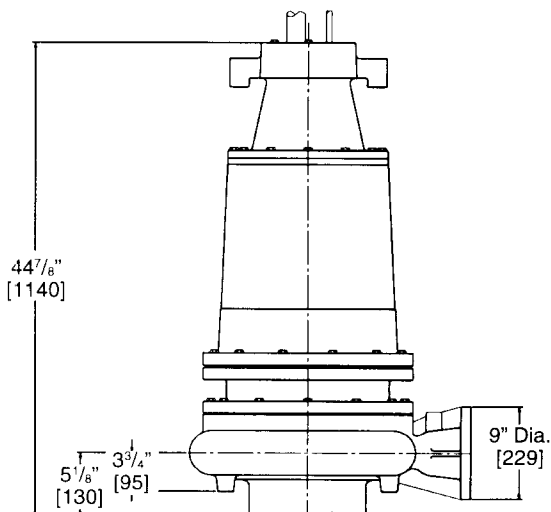
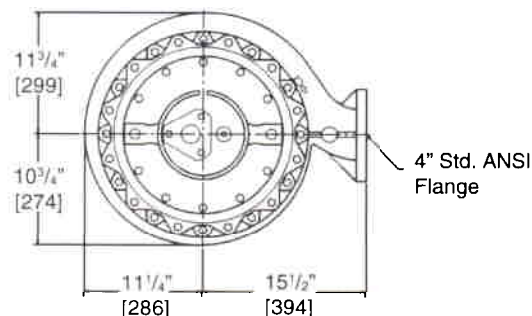
Help keep trash from seal, reduces pressure at seal faces.

HIGH EFFICIENCY IMPELLER

Two-vane, rounded port, non-clogging design. Passes 3" spherical solids.

DIMENSIONS

[] Dimensions in mm



PERFORMANCE CURVE

