



GRIZZLY™



THE MG200 GRIZZLY™ IS A 2 HP SUBMERSIBLE GRINDER PUMP DESIGNED TO BE RUGGED AND ECONOMICAL FOR RESIDENTIAL AND PRESSURE SEWAGE APPLICATIONS. Long discharge runs or high static heads are not a problem. The Grizzly™ features a patented cutter mechanism and recessed impeller design to effectively macerate typical domestic sewage solids into a fine slurry.

Myers offers a complete turn-key system for simple selection and installation. No complicated control panel is required. For years of trouble-free service go with the leader in grinder pump technology. Contact your local Myers representative or the Myers Ohio sales office at 419/289-1144.

MG200

2 HP Grinder Pump
for Residential and Pressure Sewer
Applications

ADVANTAGES BY DESIGN

IDEAL FOR USE IN PRESSURE SEWER SYSTEMS.

- Recessed impeller provides steep non-overloading operating curve.

DURABLE MOTOR WILL DELIVER MANY YEARS OF RELIABLE SERVICE.

- Oil-filled motor for maximum heat dissipation and constant bearing lubrication.
- Recessed impeller reduces radial bearing loads, increases bearing life.
- High torque capacitor starts single phase motor for assured starting under heavy load. No external capacitor needed.
- Heavy duty, 2 hp listed, wide angle float switch.
- On-winding current and temperature sensitive overload.

THE MG200 IS DESIGNED FOR EASY MAINTENANCE.

- Shredding ring and grinder impeller are replaceable without dismantling pump or motor.

PRODUCT CAPABILITIES

Capacities To	40 GPM	150 LPM
Heads To	105 ft.	32.1 m
Liquids Handling	domestic raw sewage	
Intermittent Liquid Temp.	up to 140° F	up to 60° C
Winding Insulation Temp. (Class B)	266° F	130° C
Motor Electrical Data	2 hp 3450 RPM 1 ph - capacitor start/run. 230 volt; 60 Hz, 15.0 amps	
Third Party Approvals	CSA, UL listed	
Acceptable pH Range	6-9	
Specific Gravity	.9-1.1	
Viscosity	28-35 SSU	
Discharge, NPT	1 1/4 in.	31.75 mm
Min. Sump Dia.	Simplex Duplex	24 in. 36 in.
		61.0 cm 91.4 cm

Construction Materials	
Motor Housing, Seal Housing, Volute Case	cast iron, Class 30, ASTM A48-76
Power Cord, 20'	14/3 SJOW/SJOW-A
Mechanical Seal Std. Opt.	carbon & ceramic tungsten carbide
Pump, Motor Shaft	416 SST
Fasteners	300 Series SST
Shredding Ring Grinder Impeller	440 SST, 58-60 Rockwell
Recessed Impeller	engineered thermoplastic

WHERE INNOVATION MEETS TRADITION

Myers®

Pentair Pump Group

MG200

2 HP Grinder Pump
For Residential and Pressure Sewer
Applications

HIGH SPEED MOTOR

2 hp, 3450 RPM, 230V, 1 phase. High torque oil-filled motor conducts heat and lubricates bearings.

CABLE ENTRY SYSTEM

Provides double seal protection. Cable jacket sealed by compression fitting. Individual wires sealed by potting epoxy. Power cord can be replaced without disturbing motor.

OVERLOAD-HEAT SENSOR

Protects motor from burn-out due to excessive heat from any overload condition. Automatically resets when motor has cooled.

SHAFT SEAL

Single carbon and ceramic faced seal. Oil lubricated.

VOLUTE CASE

Cast iron, 1 1/4" vertical discharge.

IMPELLER

Engineered thermoplastic recessed impeller handles ground slurry without clogging or binding. Provides unobstructed flow passage. Reduces radial loads. Pump-out vanes help keep trash from seal, reduces pressure at seal face.

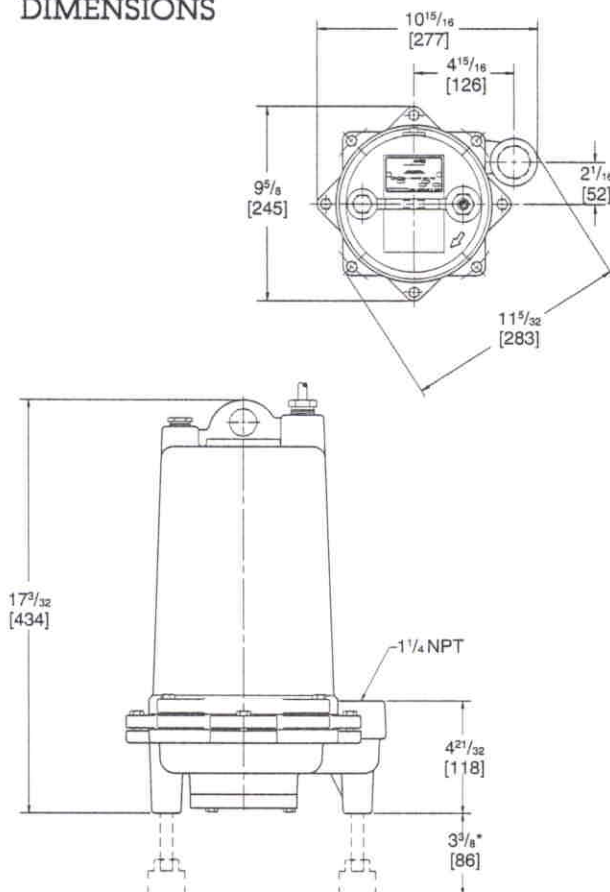
SHAFT AND FASTENERS

The shaft and all fasteners are made from corrosion resistant stainless steel.

GRINDER ASSEMBLY

Grinder impeller and shredding ring are replaceable without dismantling pump. Constructed of 440 SST hardened to 56-60 Rockwell.

DIMENSIONS



* Leg kit required when not using guide rail liftout system.

PERFORMANCE CURVE

