

4VC and 4VCX (EXPLOSION-PROOF)

4" Non-clog Wastewater Pumps
Standard (4VC) and Explosion-proof (4VCX) Construction



Approved
(4VCX only)

THE 4VC AND 4VCX (EXPLOSION-PROOF) SUBMERSIBLE WASTEWATER PUMPS ARE A HEAVY-DUTY 4" NON-CLOG SERIES CAPABLE OF PASSING A FULL 3³/₁₆" SPHERICAL SOLID. Myers rounded port, 2-vane, enclosed impellers prevent solids from binding or clogging and offer high operating efficiencies to cut your pumping costs. The 4VC series modified constant velocity volute case provides smooth operation over an extended portion of the performance curve for longer seal and bearing life. For use in municipal lift stations, treatment plants and industrial waste applications, Myers offers a complete line of wastewater pumps, lift-out rail assemblies, controls and accessories to meet your needs. Call your Myers distributor, or the Myers Ohio sales office at 419/289-1144 for more details.

ADVANTAGES BY DESIGN

HIGH EFFICIENCY HYDRAULIC DESIGN CUTS PUMPING COSTS AND EXTENDS LIFE OF FLUID END COMPONENTS.

- Two-vane, rounded port, enclosed type impellers handle 3³/₁₆" solids with ease at high operating efficiencies.
- Modified constant velocity volute offers quiet operation, low radial loads over extended portion of performance curve.

DURABLE MOTOR WILL DELIVER MANY YEARS OF RELIABLE SERVICE.

- Oil-filled motor for maximum heat dissipation and constant bearing lubrication.
- Heat sensor thermostats imbedded in windings protect motor from over heat conditions.
- Seal leak probes warn of moisture entry; helps prevent costly motor burn-out.
- Double tandem shaft seals prevent sewage from entering motor.
- Power and control cables are triple sealed with epoxy, compression grommet and terminal board.

AVAILABLE WITH OPTIONAL F.M. APPROVAL FOR USE IN CLASS 1, GROUPS C AND D HAZARDOUS LOCATIONS (4VCX ONLY).

- 4VCX job number ON4A1.AE.
- Non-sparking rail system available.

PRODUCT CAPABILITIES

Capacities To	1800 GPM	113.4 L/S
Heads To	165 ft.	50.3 m
Solids Handling Capacity	3 ³ / ₁₆ in. dia.	80 mm dia.
Liquids Handling	raw unscreened sewage, effluent, storm water	
Intermittent Liquid Temp.	up to 140°F	up to 60°C
Winding Insulation Temp. (Class F)	311°F	155°C
Available Motors	1750 RPM: 15 HP, 208, 230, 460, 575V, 3Ø, 60 Hz 20-60 HP, 230, 460, 575V, 3Ø, 60 Hz 1150 RPM: 5-20 HP, 208, 230, 460, 575V, 3Ø, 60 Hz 870 RPM: 2-7 1/2 HP, 208, 230, 460, 575V, 3Ø, 60 Hz	
Std. Third Party Approvals	CSA	
Optional Approvals	FM Class 1, Groups C & D (4VCX only)	
Acceptable pH Range	6-9	
Specific Gravity	.9-1.1	
Viscosity	28-35 SSU	
Discharge, Horizontal Flanged Centerline	4 in., 125 lb. ANSI	101.6 mm

NOTE: Consult factory for applications outside of these recommendations.

Construction Materials

Motor Housing, Seal Housing, Cord Cap and Volute Case	cast iron, Class 30 ASTM A48-76
Enclosed 2-Vane Impeller	ductile iron, Class 65 ASTM A536-80
Power and Control Cord	25 ft. SOW/SOW-A
Mechanical Seals	double tandem, type 21
Standard	carbon and ceramic
Optional	lower tungsten carbide
Pump, Motor Shaft	416 SST
Fasteners	300 Series SST
Volute Wear Ring	brass

WHERE INNOVATION MEETS TRADITION

4VC and 4VCX (EXPLOSION-PROOF)

4" Non-clog Wastewater Pumps
Standard (4VC) and Explosion-proof (4VCX) Construction

POWER & CONTROL CORDS
SOW-A, FM and CSA
approved oil-resistant
cable.

CABLE ENTRY SYSTEM

Provides triple seal protection. Cable jacket sealed by compression grommet. Individual wires sealed by epoxy potting. Terminal board separates motor chamber from cord cap.

HEAT SENSOR

Protects motor from burn-out due to excessive heat from any overload condition. Automatically resets when motor has cooled.

MOTOR STATOR

Heat shrunk into housing for perfect alignment and best heat transfer. Oil-filled motor conducts heat and lubricates bearings.

BALL BEARINGS

Upper and lower ball bearings support shaft and rotor and take axial and radial loads.

SHAFT SEALS

Double tandem mechanical shaft seals protect motor. Oil-filled seal chamber provides continuous lubrication.

SLEEVE BEARING

Takes radial shock load; provides flame path.

SEAL LEAK PROBES

Detect water in seal housing. Activate warning light in control panel.

HEAVY 416

SST SHAFT

Corrosion resistant.

VOLUTE CASE

Modified constant velocity volute handles $3\frac{3}{16}$ " solids. 4" ANSI 125 lb. flange.

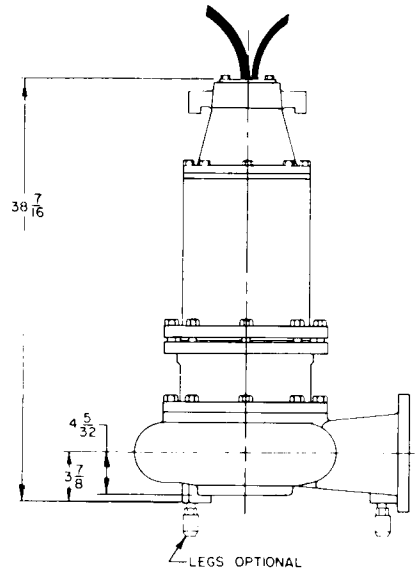
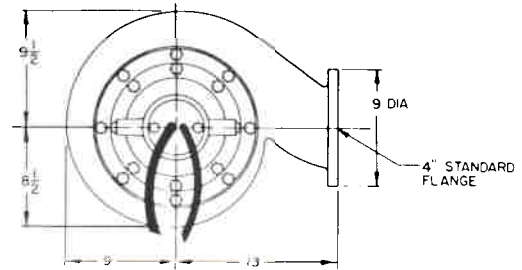
HIGH EFFICIENCY IMPELLER

2-vane with rounded ports. Handles $3\frac{3}{16}$ " solids. Pump out vanes help keep trash from seal; reduces pressure at seal faces.

BRASS WEAR RING

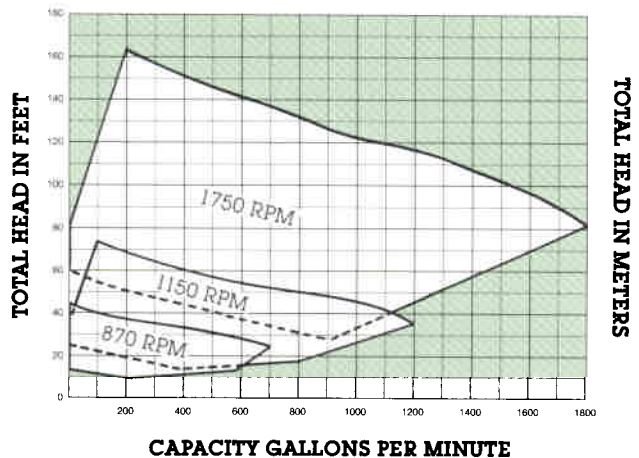
Prevents rust build-up and reduces leakage and wear. Replaceable to restore original running clearances and pump efficiencies.

DIMENSIONS



PERFORMANCE CURVE

CAPACITY LITERS PER MINUTE



CAPACITY GALLONS PER MINUTE

K3421 11/00
Printed in U.S.A.



Myers
Pentair Pump Group

F. E. Myers, 1101 Myers Parkway, Ashland, Ohio 44805-1969
419/289-1144, FAX: 419/289-6658, www.femyers.com

Myers (Canada), 269 Trillium Drive, Kitchener, Ontario N2G 4W5
519/748-5470, FAX: 519/748-2553