

12VL and 12VLX

12" Submersible Non-Clog Wastewater Pump
Standard (12VL) and Explosion-Proof (12VLX)



THE MYERS 12VL SUBMERSIBLE NON-CLOG SEWAGE PUMPS ARE DESIGNED ESPECIALLY FOR HIGH FLOW, MEDIUM HEAD APPLICATIONS SUCH AS: large municipal lift stations, treatment plants, transfer stations and dewatering. A quick removal type rail system is available to simplify installation and maintenance. The 12VL's high pumping efficiencies, ability to handle solids up to 5/4 inches in diameter and 2 available motor speeds make it ideal for most high flow wastewater applications. For more information, contact your Myers distributor, or the Myers Ohio sales office at 419/289-1144.

ADVANTAGES BY DESIGN

HIGH EFFICIENCY HYDRAULIC DESIGN CUTS PUMPING COSTS AND EXTENDS LIFE OF FLUID END COMPONENTS.

- Two-vane, rounded port impellers handle solids with ease at high operating efficiencies.
- Modified, constant velocity volute offers quiet operation, low radial loads over extended portion of performance curve.

DURABLE MOTOR WILL PROVIDE MANY YEARS OF RELIABLE SERVICE.

- Oil-filled motor and seal cavity for maximum heat dissipation and continuous lubrication.
- Heat sensor thermostats imbedded in windings protect motor from overheat conditions.
- Seal leak probes in seal chamber warn of moisture entry, help prevent costly motor burn-out.

PRODUCT CAPABILITIES

Capacities To	7750 GPM	29331 LPM
Heads To	72 ft.	21.9 m
Solids Handling (dia.)	5 1/4 in.	133.3 mm
Liquids Handling	raw, unscreened sewage, drain water, effluent	
Intermittent Liquid Temp.	up to 140°F	up to 60°C
Winding Insulation Temp. (Class F)	311°F	155°C
Available Motors	1150 RPM: 40, 50 hp, 3 ph 230, 460 & 575 volts, 60 Hz 60, 75 hp, 3 ph 460 & 575 volts, 60 Hz 870 RPM: 15, 20, 25 hp, 3 ph 200, 230, 460 & 575 volts, 60 Hz 30 hp, 3 ph, 230, 460 & 575 volts, 60 Hz	
Std. Third Party Approvals	CSA	
Optional Approvals	FM Class 1, Groups C & D	
Acceptable pH Range	6-9	
Specific Gravity	.9-1.1	
Viscosity	28-35 SSU	
Horizontal Discharge Flange	12 in. 125 lb. ANSI	304.8 mm

NOTE: Consult factory for applications outside of these recommendations.

Construction Materials	
Motor Housing, Seal Housing, Cord Cap, Volute Case	cast iron, Class 30, ASTM A48-76
Enclosed 2-Vane Impeller	ductile iron, Class 65 ASTM A536-80
Power, Control Cords	25' SOW/SOW-A
Double Tandem Mechanical Seals	Std. - carbon & ceramic Opt. - lower tungsten carbide
Pump, Motor Shaft	416 SST
Fasteners	300 Series SST
Case Wear Ring	bronze

WHERE INNOVATION MEETS TRADITION

Myers®

Pentair Pump Group

12VL and 12VLX

12" Submersible Non-Clog Wastewater Pump
Standard (12VL) and Explosion-Proof (12VLX)

CABLE ENTRY SYSTEM

Cable jackets sealed with clamped, rubber grommet. Individual wires sealed with epoxy to prevent wicking in case of cable damage.

TERMINAL BOARD

Provides easy connections from power and control cables to stator. Allows easy voltage change in field on dual winding motors.

HEAT SENSORS ON MOTOR WINDING

Opens to de-energize motor starter if winding temperature reaches 150° C. Auto reset.

MOTOR STATOR

Oil-filled for continuous lubrication of bearings and seals. Class F insulation.

HEAVY 416 STAINLESS STEEL SHAFT

Reduces deflection from impeller radial loads. Tapered and keyed to accept impeller.

UPPER AND LOWER BALL BEARINGS

HORIZONTAL DISCHARGE VOLUTE CASE

12" 125 lb. flange.

PUMP OUT VANES

Help keep trash from seal, reduces pressure at seal faces.

DOUBLE TANDEM SHAFT SEALS

Protect motor, operate in clean oil.

BRONZE WEAR RING

Reduces by-pass leakage and wear. Replaceable to restore original running clearances and pump efficiencies.

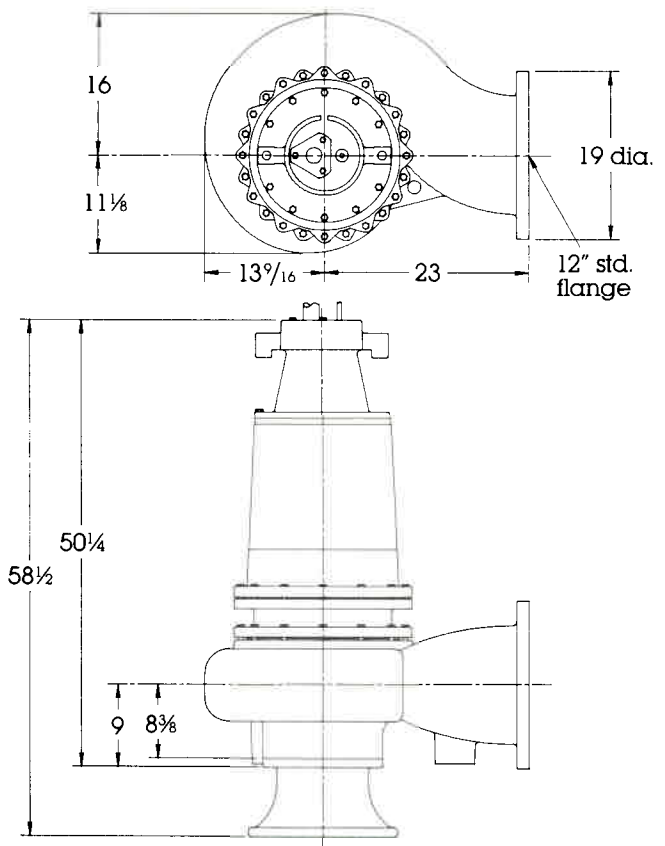
HIGH EFFICIENCY IMPELLER

Two-vane, rounded port, non-clogging design. Passes 5/4" spherical solids.

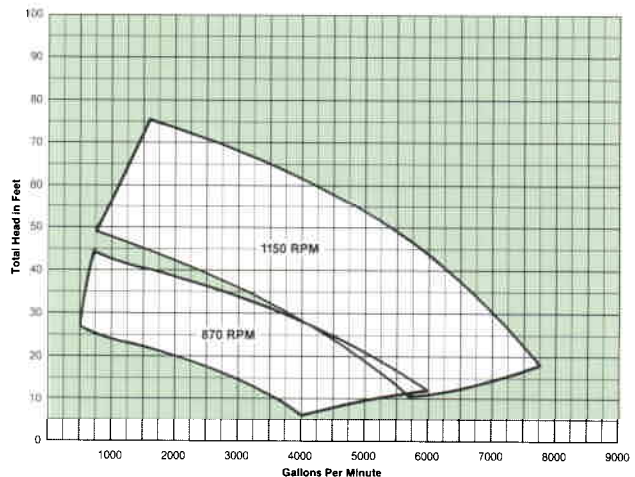
DUAL SEAL LEAK PROBES

Detect water in seal housing, activate warning light in control panel.

DIMENSIONS



PERFORMANCE CURVE



K3342 6/00
Printed in U.S.A.



Myers®
Pentair Pump Group

F. E. Myers, 1101 Myers Parkway, Ashland, Ohio 44805-1969
419/289-1144, FAX: 419/289-6658, www.femyers.com

Myers (Canada), 269 Trillium Drive, Kitchener, Ontario N2G 4W5
519/748-5470, FAX: 519/748-2553