

4WHV and V4WHV

4" Non-Clog Wastewater Pumps
Horizontal and Vertical Discharge



ADVANTAGES BY DESIGN

HIGH EFFICIENCY HYDRAULIC DESIGN CUTS PUMPING COSTS AND EXTENDS LIFE OF FLUID END COMPONENTS.

- Two-vane rounded port impellers handle solids with ease at high operating efficiencies.
- Modified constant velocity volute offers quiet operation, low radial loads over extended portion of performance curve.

DURABLE MOTOR WILL PROVIDE MANY YEARS OF RELIABLE SERVICE.

- Oil-filled for maximum heat dissipation and continuous bearing lubrication.
- Heat sensor thermostats imbedded in windings protect motor from overheat conditions.
- Seal leak probe in seal chamber warns of moisture entry, helps prevent costly motor burn-out.

PRODUCT CAPABILITIES

Capacities To	720 gpm	45.5 lps
Heads To	59 ft.	17.9 m.
Solids Handling Capacity (dia.)	3 in.	76 mm
Liquids Handling	raw, unscreened sewage, rain water, effluent	
Intermittent Liquid Temp.	140°F	60°C
Winding Insulation Temp. (Class B)	266°F	130°C
Available Motors (Single phase motors are capacitor start-type. Myers control panels or capacitor kits are required for proper operation and warranty.)	1750 rpm; 3-5 HP, 230V, 1Ø, 60 Hz. 3-10 HP, 200/230/460/575V, 3Ø, 60 Hz.	
Third Party Approval	CSA, ETL	
Acceptable pH Range	6-9	
Specific Gravity	9-1.1	
Viscosity	28-35 SSU	
Discharge, Flanged Centerline (Horizontal or Vertical)	4 in.	101.6 mm
Minimum Sump Dia. (Duplex)	60 in.	1.5 m

Note: Consult factory for applications outside of these recommendations.

Construction Materials	
Motor Housing, Seal Housing, Cord Cap, Volute Case	cast iron, class 30 ASTM A48-76
Enclosed 2-Vane Impeller	ductile iron, class 65 ASTM A536-80
Power, Control Cords	SOW/SOWA, 20 ft.
Mechanical Seals	double tandem, type 21 standard-carbon/ceramic optional-tungsten carbide
Pump, Motor Shaft	416 SST
Fasteners	300 series SST
Wear Ring	brass

THE 4WHV AND V4WHV SERIES NON-CLOG PUMPS ARE DESIGNED PRIMARILY FOR COMMERCIAL APPLICATIONS SUCH AS: schools and churches, industrial plants, shopping centers, apartments and condominiums, marinas, interstate rest stops, sewage collection systems, campgrounds, motels, restaurants, office and commercial buildings, state and federal parks, hospitals and nursing homes, dewatering, trailer parks and treatment plants. This pump can be installed on legs (vertical discharge) or with a quick-disconnect slide rail system. Its ability to handle 3-inch spherical solids makes it ideal for most light to medium commercial installations. For more information, contact your Myers distributor, or the Myers Ohio sales office at 419/289-1144.

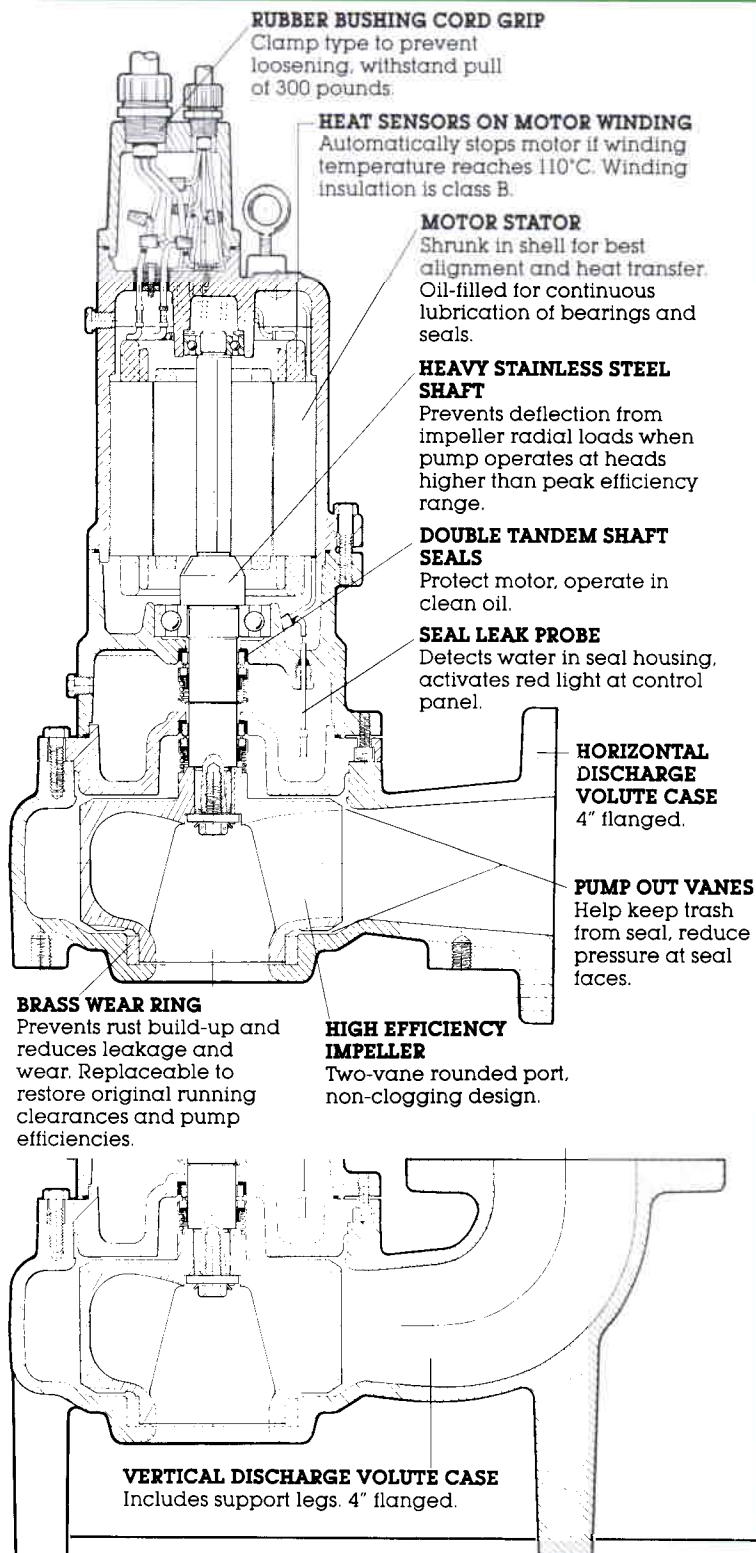
WHERE INNOVATION MEETS TRADITION

Myers®

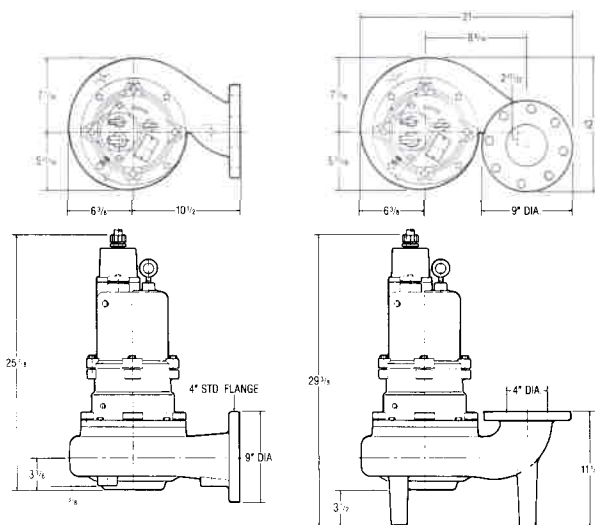
Pentair Pump Group

4WHV and V4WHV

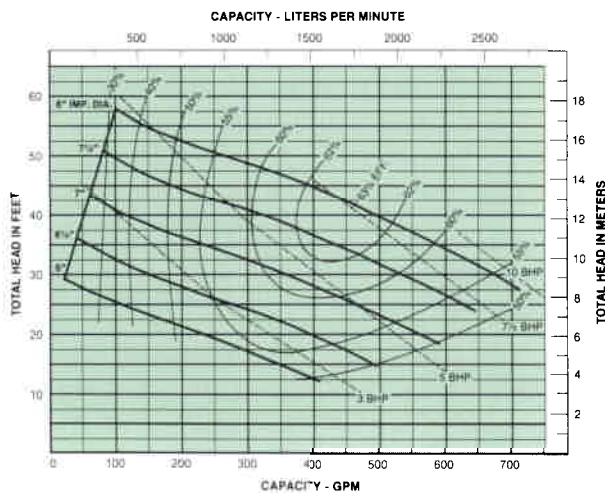
4" Non-Clog Wastewater Pumps
Horizontal and Vertical Discharge



DIMENSIONS



PERFORMANCE CURVE



Myers®

Pentair Pump Group

F. E. Myers, 1101 Myers Parkway, Ashland, Ohio 44805-1969
419/289-1144, FAX: 419/289-6658, www.femyers.com

Myers (Canada), 269 Trillium Drive, Kitchener, Ontario N2G 4W5
519/748-5470, FAX: 519/748-2553