

FAUCET DESCRIPTION

- Chrome plated brass and metal construction
- Supplied with vandal resistant screws

OPERATION

- Lever style handle with temperature indicator on the escutcheon
- Pull-on/push-off operation
- Temperature operates through an 180° arc of handle travel (full cold to full hot)
- Adjustable temperature limit stop to limit the handle travel in the HOT direction
- Pressure balancing mechanism maintains selected discharge temperature to $\pm 2^\circ$

CARTRIDGE

- 1225 cartridge design
- Nonmetallic/nonferrous and stainless steel materials
- Accommodates back to back installations

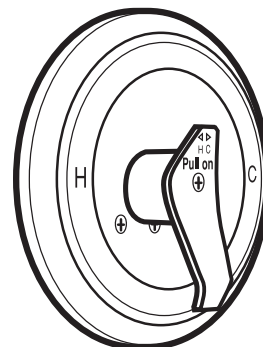
STANDARDS

- Third party certified to ASME A112.18.1/CSA B125.1 and all applicable requirements referenced therein including ASSE 1016

- **ADA**  for lever handle

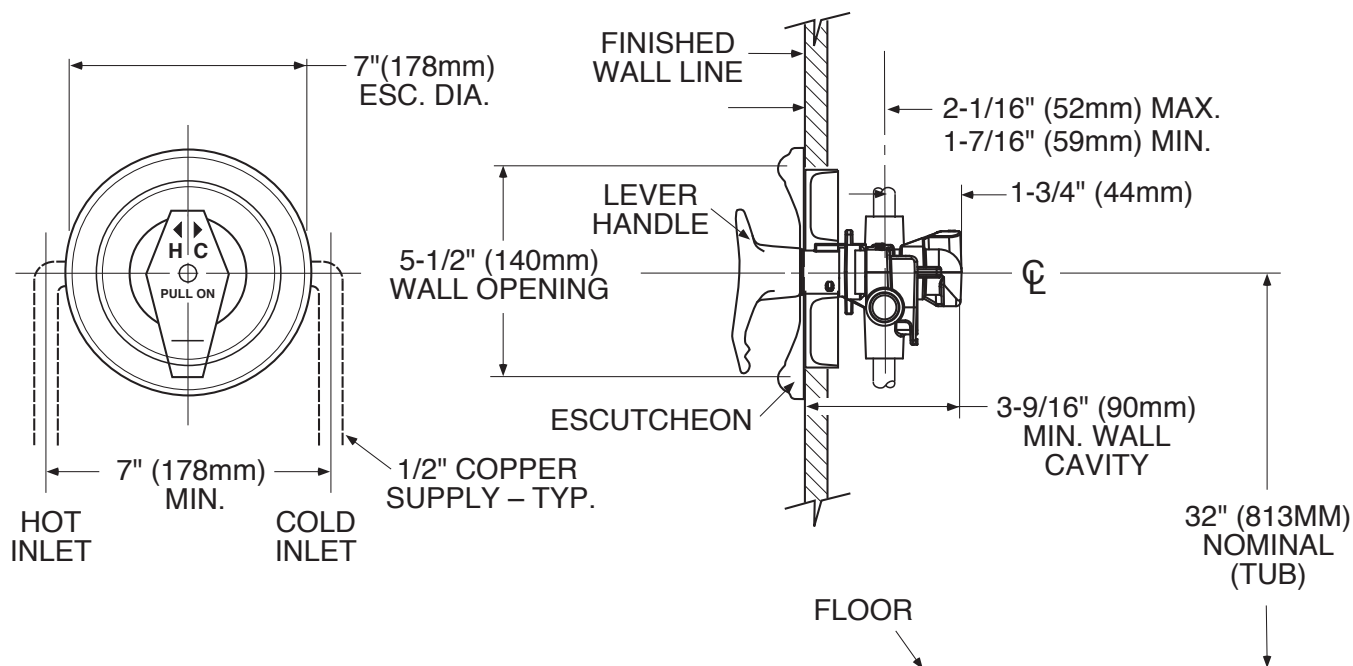
WARRANTY

- Warranted for 5 years against material or manufacturing defects



**Single-Handle Moentrol
Pressure Balancing Tub/Shower Valve
Trim Only**

Model: T8350



CRITICAL DIMENSIONS

(DO NOT SCALE)