

BA-485 B

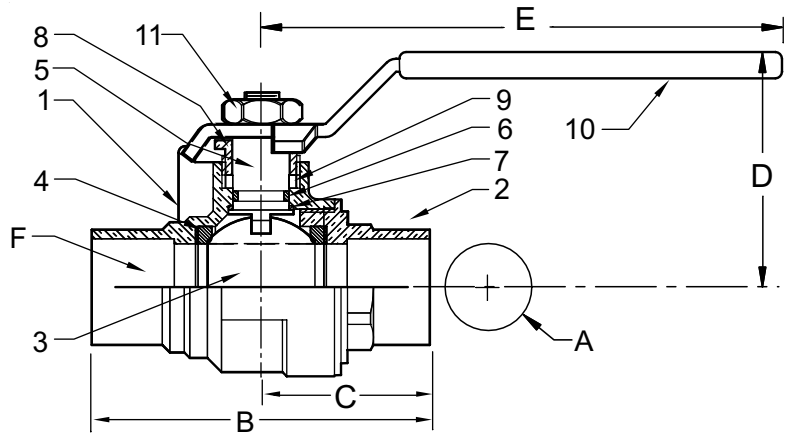
1/2" - 3"

**BRASS BALL VALVE
TWO PIECE, FULL PORT
600 PSIG WOG / 150 PSIG SWP *
SOLDERED ENDS**

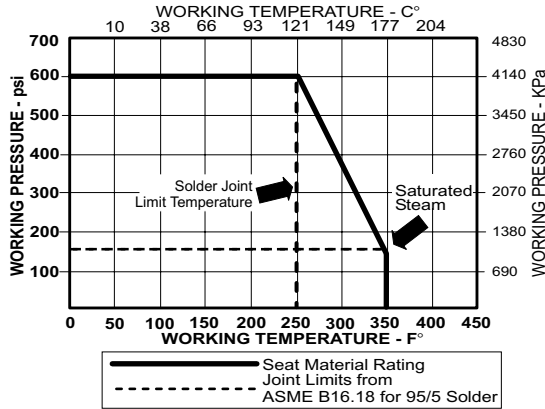
FED. SPEC. WW-V-35C II, BZ, 3, c
MSS SP-110

MATERIALS LIST

ITEM	PART	MATERIALS	ASTM/SPEC
1	Body	Brass, Forged	B283
2	Tailpiece	Brass, Forged	B283
3	Ball	CP Brass Ball	B584
4	Ball Seal	PTFE	Commercial
5	Stem	Brass	B16
6	O-Ring	Buna-N	D2006
7	Thrust Washer	PTFE	Commercial
8	Gland Nut	Brass	B16
9	Packing	PTFE	Commercial
10	Handle	Steel	B633
11	Handle Nut	Brass	B16



PRESSURE - TEMPERATURE CHART



VACUUM SERVICE TO 29 INCHES Hg.

VALVE SIZE	UNITS	1/2	3/4	1	1-1/4	1-1/2	2	2-1/2	3
A	INCHES	0.51	0.79	1.00	1.26	1.50	2.00	2.48	2.95
	mm	13.0	20.1	25.4	32.0	38.1	50.8	63.0	74.9
B	INCHES	2.26	3.07	3.57	4.13	4.63	5.75	7.25	8.25
	mm	57.9	78.0	90.7	104.5	117.6	146.1	131.1	152.4
C	INCHES	1.13	1.54	1.79	2.07	2.32	2.88	3.62	4.12
	mm	28.7	39.0	45.3	52.5	58.8	73.0	92.1	104.7
D	INCHES	1.61	2.09	2.24	2.76	2.91	3.66	3.94	4.37
	mm	40.9	53.1	56.9	70.1	73.9	93.0	100.1	111.0
E	INCHES	3.31	4.65	4.65	5.28	5.28	7.87	7.87	7.87
	mm	84.1	118.1	118.1	134.1	134.1	199.9	199.9	199.9
F	TUBE SIZE	.63	.88	1.13	1.38	1.63	2.13	2.63	3.13
Cv	GPM	17.9	40.3	71.6	111.9	161.2	286.6	447.8	644.8
TORQUE	in-lb	19	58	69	89	124	201	445	563
WEIGHT	lbs	0.42	0.92	1.27	1.91	2.53	4.96	10.00	13.00
	Kg	0.19	0.42	0.57	0.86	1.15	2.25	4.54	5.90