

# BA-350TE/350STE

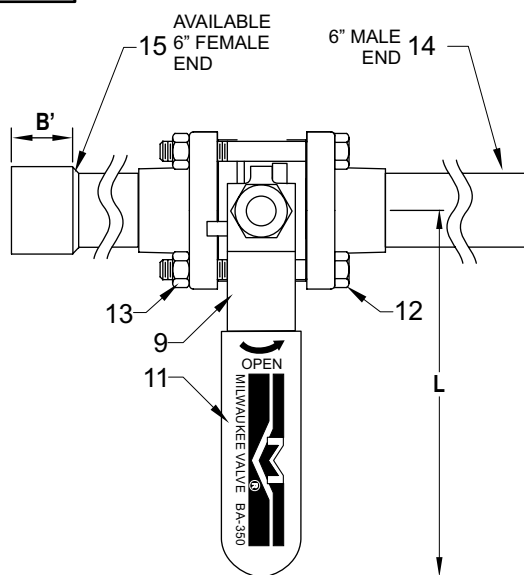
# 1/2"-2"

**BRONZE BALL VALVE  
THREE-PIECE, FULL-PORT  
600 WOG / 150 SWP  
EXTENDED TUBE ENDS  
INLINE REPAIRABLE\***

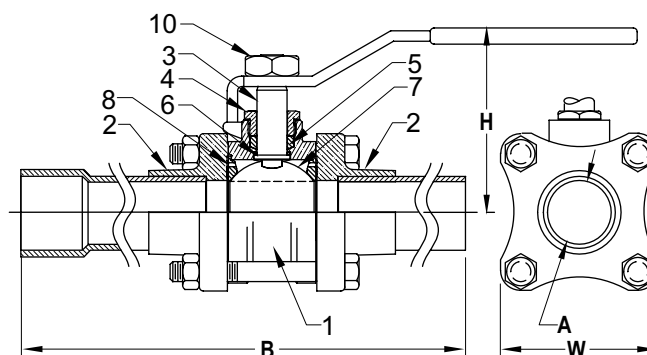
MSS SP-110

## MATERIALS LIST

ITEM	PART	MODEL	MATERIALS	ASTM SPEC.
1	Body	350 & 350S	Bronze	B584
2	End Cap	350 & 350S	Bronze	B584
3	Stem	350	Brass	B16
		350S	316 Stainless Steel	B276
4	Packing Nut	350 & 350S	Brass	B16
5	Packing	350 & 350S	PTFE	
6	Thrust Washer	350 & 350S	RPTFE (25% Glass Reinforced)	
7	Ball	350	CP Brass	B16
		350S	316 Stainless Steel	B276
8	Seat	350 & 350S	RPTFE (15% Glass Reinforced)	
9	Handle	350 & 350S	Steel w/ Zinc Plating	B633
10	Handle Nut	350 & 350S	Steel w/ Zinc Plating	B633
11	Handle Grip	350 & 350S	Vinyl	
12	Body Bolt	350 & 350S	Steel (Gr 8) w/ Zinc Plating	B633
13	Body Nut	350 & 350S	Steel (Gr 8) w/ Zinc Plating	B633
14	Stub End, 6"M	350 & 350S	Copper Tube, Type "K"	
15	Stub End, 6"F	350 & 350S	Copper Tube, Type "L"	



Pressure temperature charts contain valve seat and body ratings for standard valves. Solder end valves are de-rated by the limitations of the joint as specified in ASME 16.18. Braze installations can be likewise derated. Consult ASME 16.18 and the American Welding Society for the actual joint ratings of the material being used for the specific application. Pressure and Temperature ratings may be further derated in accordance with the pressure rating associated with the type of copper tube used for the stub end. Call the factory for accurate application data.



## DIMENSIONS

	UNITS	1/2" DN15	3/4" DN20	1" DN25	1-1/4" DN32	1-1/2" DN40	2" DN50
A (DIA)	INCHES	0.5	0.75	1	1.25	1.5	2
	mm	13	19	25	32	38	51
B	INCHES	13.86	13.92	14.03	14.79	15.05	15.4
	mm	352	354	356	376	382	391
B'	INCHES	0.51	0.76	0.92	0.98	1.1	1.35
	mm	13	19	23	25	28	34
H	INCHES	1.95	2.26	2.44	2.8	3.12	3.58
	mm	50	57	62	71	79	91
L	INCHES	3.88	4.75	4.75	6.5	7.38	7.38
	mm	99	121	121	165	187	187
W	INCHES	1.91	2.19	2.46	2.98	2.98	4
	mm	49	56	62	76	76	102
Cv		17	31	60	110	185	360

NOTE: DN (Diameter Nominal)=Metric equivalent size.

\* Designed for soft solder or brazed installation without disassembly.

The information presented on this sheet is correct at the time of publication. Milwaukee valve reserves the right to change design, and/or material specifications without notice. For the most current information access [www.milwaukeevalve.com](http://www.milwaukeevalve.com).

