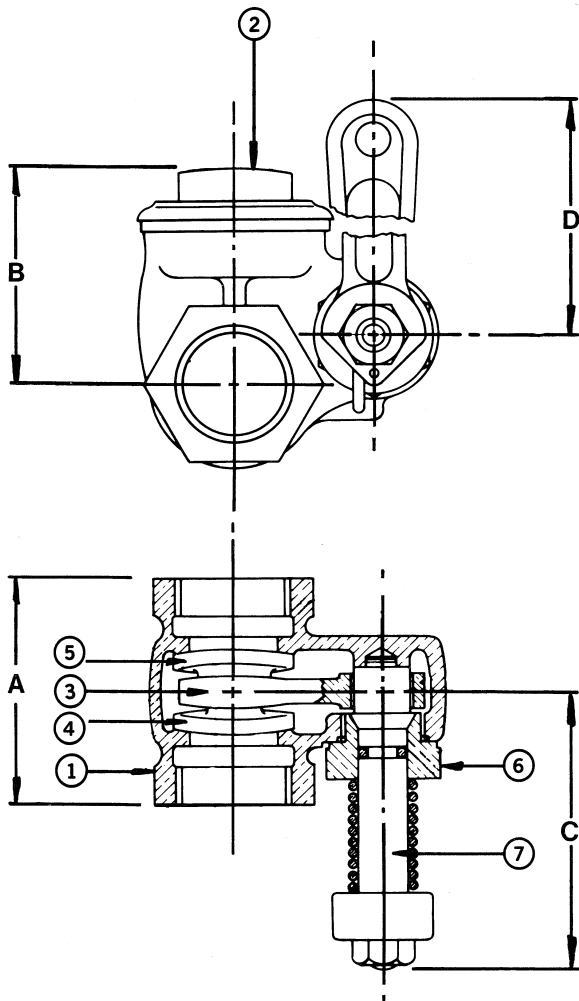


GATE 902

BRONZE - QUICK OPENING

150 lb. WOG† • O-Ring Stem Packed • Tank Trucks • Bulk Plants
Double Disc • Spring Loaded • Lever Operated • Threaded Ends



MATERIAL LIST

NO.	PART	MATERIAL
1	Body	Bronze
2	Cap	Bronze
3	Lever	Bronze
4	Male Disc	Bronze
5	Female Disc	Bronze
6	Bonnet (Center Piece)	Bronze
7	Stem	Bronze
8	Lever Handle	Malleable Iron
9	O-Ring	Buna-N
10	Handle Nut	Steel
11	Torsion Spring	Spring Steel - Cadmium Plated

DIMENSIONS - INCHES / MILLIMETERS					
Units	Size	A	B	C	D
Inches	3/4	2 1/4	2 3/16	2 1/2	4 3/4
MM	19.05	57.15	55.58	63.50	120.65
Inches	1 1/4	2 7/8	2 7/8	2 15/16	8 3/16
MM	31.75	73.03	73.03	74.63	207.98

† Non-Shock

INNOVATION IN EVERY VALVE



MILWAUKEE VALVE